

Data Sheet

Excel Life™

Dedicated Plate - 2 Gang Switch, 16A

CAT NO. **ED770/2WE, ED770/2UG**



Cat No	ED770/2WE, ED770/2UG
Description	Excel Life Dedicated Plate - 2 Gang Switch, 16A
Supply voltage	230 - 240V a.c.
Current rating	16A, 16AX (fluoro)
Colour	White (WE), Urban Grey (UG)
Plate size	77 W x 121 H x 10 D mm
Mounting centres	84mm
Compliance	AS/NZS 3133

Excel Life™

Dedicated Plate - 2 Gang Switch, 16A

CAT NO. **ED770/2WE, ED770/2UG**



- Fluoro rated up to 16AX
- More fixing options - 4 corners
- Oval 84mm fixing points - make it easier to straighten-up products at the last minute

Glass and tile cut-out dimensions:

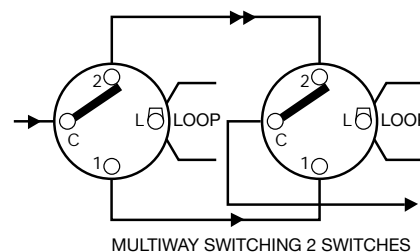
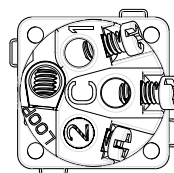


Product specifications	
Cat No	ED770/2WE, ED770/2UG
Supply voltage	230-240V a.c.
Current rating	16A, 16AX (fluoro)

Single product	
Cat No	Barcode
ED770/2WE	9321001401858
ED770/2UG	9321001411321

Inner box (QTY 10)		
Cat No	Barcode	Dimensions
ED770/2WE	9321001404293	160 x 160 x 120mm
ED770/2UG	9321001411987	160 x 160 x 120mm

Outer box (QTY 120)		
Cat No	Barcode	Dimensions
ED770/2WE	9321001406730	499 x 333 x 266mm
ED770/2UG	9321001412649	499 x 333 x 266mm



HPM Legrand - AUS
1300 369 777
www.legrand.com.au
ABN 31 000 102 661

HPM Legrand - NZ
0800 476 009
www.legrand.co.nz

Refer to your group buying office, HPM Legrand Sales Representative or HPM Legrand Sales Office for pricing.