

Spec Sheet: IEC309 Panel Socket, Angled 16A – IP67

Part Numbers

Part Number	Description
EU67SA316	IEC309 16A 3 Pin panel socket, angled, IP67
EU67SA416	IEC309 16A 4 Pin panel socket, angled, IP67
EU67SA516	IEC309 16A 5 Pin panel socket, angled, IP67

Specification

Housing

IP	67
Colour	Blue (230V) Red (400V)
Material	Polycarbonate
UV Stabilised	Yes
Conductor cross sectional area	1.5 - 4mm ²
Weight	0.24kg
Earth Pin Location	3P 6h
	4P 6h
	5P 6h
Socket angle	20 degrees

Dimensions

W x H x D

3P, 4P and 5P	100 x 100 x 103mm
---------------	-------------------

Standard

IEC 60309-2

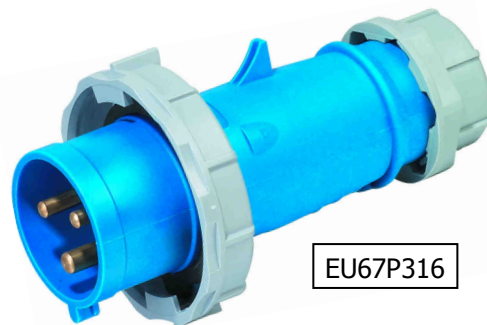


EU67SA516

Related Products

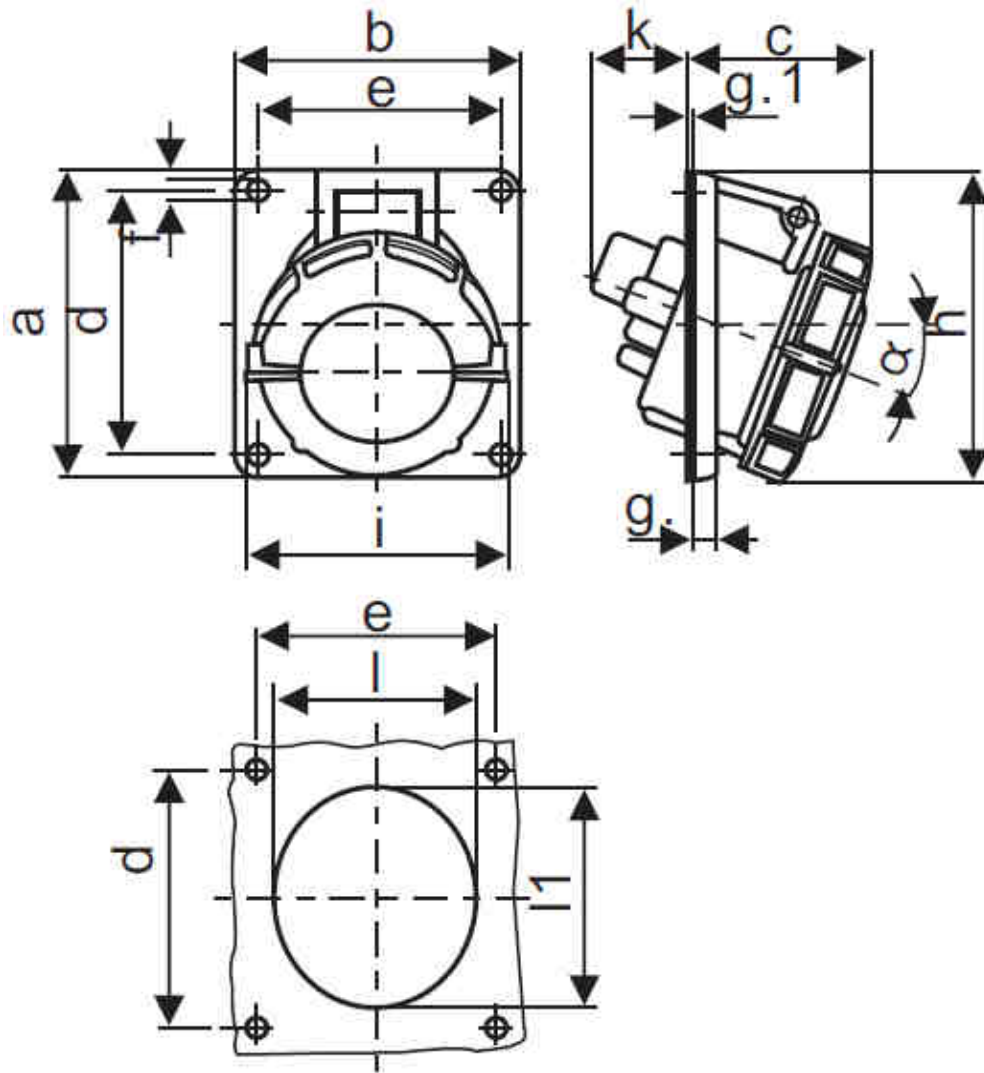
Straight Plugs

EU67P316	IEC309 16A 3 Pin straight plug, IP67
EU67P416	IEC309 16A 4 Pin straight plug, IP67
EU67P516	IEC309 16A 5 Pin straight plug, IP67



EU67P316

Dimensions



in mm

No Poles	a	b	c	d	e	f	g	g 1	h	i	k	l	l 1
3P	73.5	64	52	60	52	5.3	7	2	84	78	41	52	60
4P	100	92	59	85	77	5.3	8	2	103	85	41	60	65
5P	100	92	62	85	77	5.3	8	2	105	96	41	65	72

Spec Sheet: IEC309 Panel Socket, Angled 32A – IP67

Part Numbers

Part Number	Description
EU67SA332	IEC309 32A 3 Pin panel socket, angled, IP67
EU67SA432	IEC309 32A 4 Pin panel socket, angled, IP67
EU67SA532	IEC309 32A 5 Pin panel socket, angled, IP67

Specification

Housing

IP	67
Colour	Blue (230V) Red (400V)
Material	Polycarbonate
UV Stabilised	Yes
Conductor cross sectional area	2.5 - 10mm ²
Weight	0.24kg
Earth Pin Location	3P 6h
	4P 6h
	5P 6h
Socket angle	20 degrees

Dimensions

W x H x D

3P, 4P and 5P	92 x 103 x 103mm
---------------	------------------

Standard

IEC 60309-2

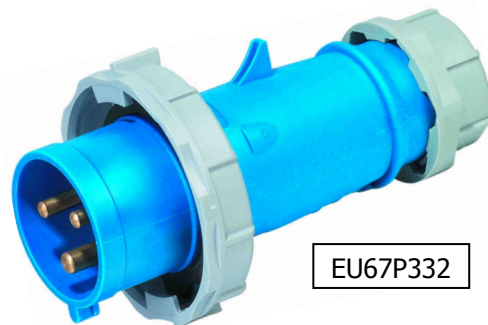


EU67SA532

Related Products

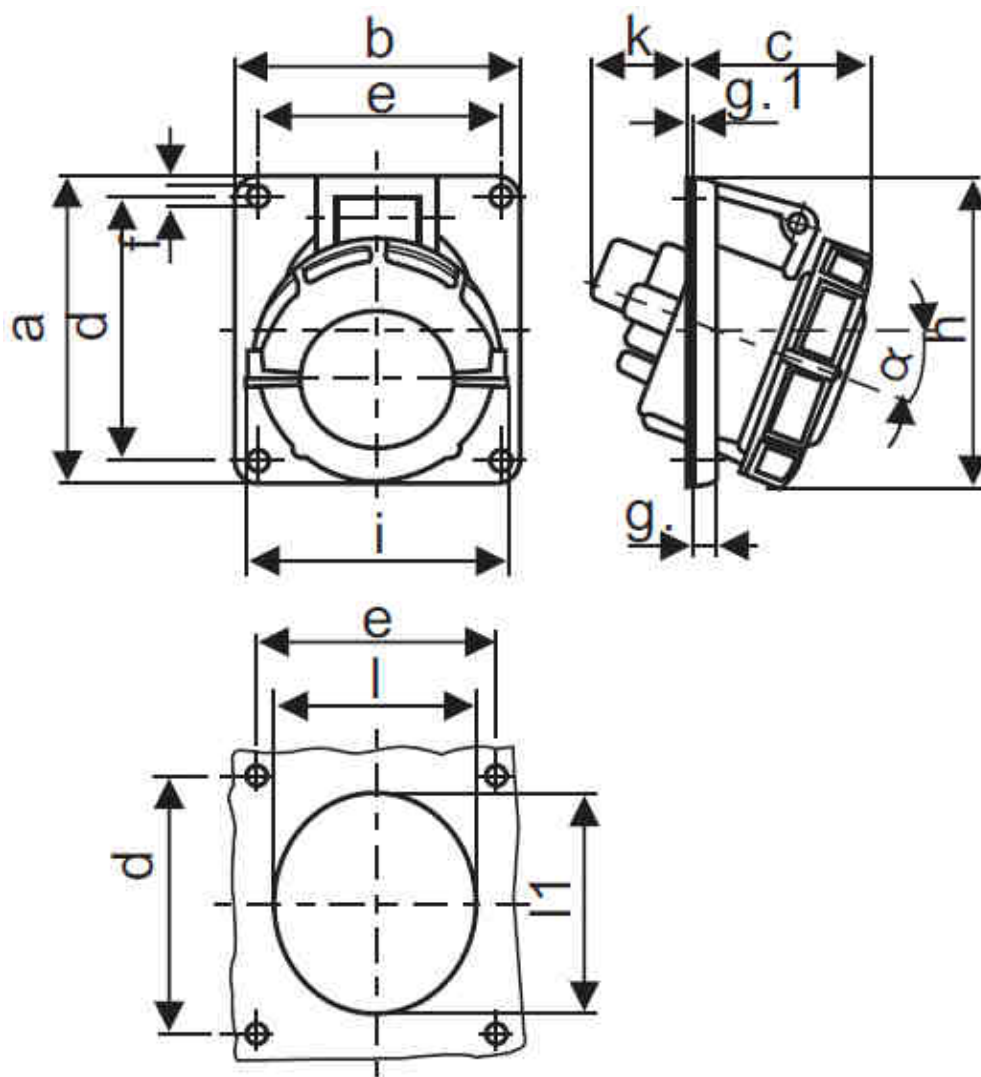
Straight Plugs

EU67P332	IEC309 32A 3 Pin straight plug, IP67
EU67P432	IEC309 32A 4 Pin straight plug, IP67
EU67P532	IEC309 32A 5 Pin straight plug, IP67



EU67P332

Dimensions



in mm

No Poles	a	b	c	d	e	f	g	g 1	h	i	k	l	l 1
3P	100	92	64	85	77	5.3	7	2	109	103	51	70	82
4P	100	92	66	85	77	5.3	8	2	109	103	51	70	82
5P	100	92	66	85	77	5.3	8	2	113	110	52	73	85

Spec Sheet: IEC309 Panel Socket, Angled 63A – IP67

Part Numbers

Part Number	Description
EU67SA363	IEC309 63A 3 Pin panel socket, angled, IP67
EU67SA463	IEC309 63A 4 Pin panel socket, angled, IP67
EU67SA563	IEC309 63A 5 Pin panel socket, angled, IP67

Specification

Housing

IP	67
Colour	Blue (230V) Red (400V)
Material	Polycarbonate
UV Stabilised	Yes
Conductor cross sectional area	6 - 25mm ²
Weight	0.67kg
Earth Pin Location	3P 6h
	4P 6h
	5P 6h
Socket angle	20 degrees

Dimensions

W x H x D

3P, 4P and 5P	106 x 110 x 131mm
---------------	-------------------

Standard

IEC 60309-2

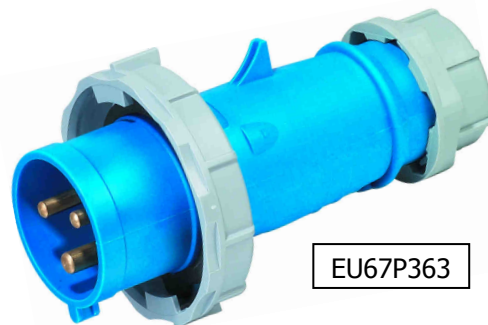


EU67SA563

Related Products

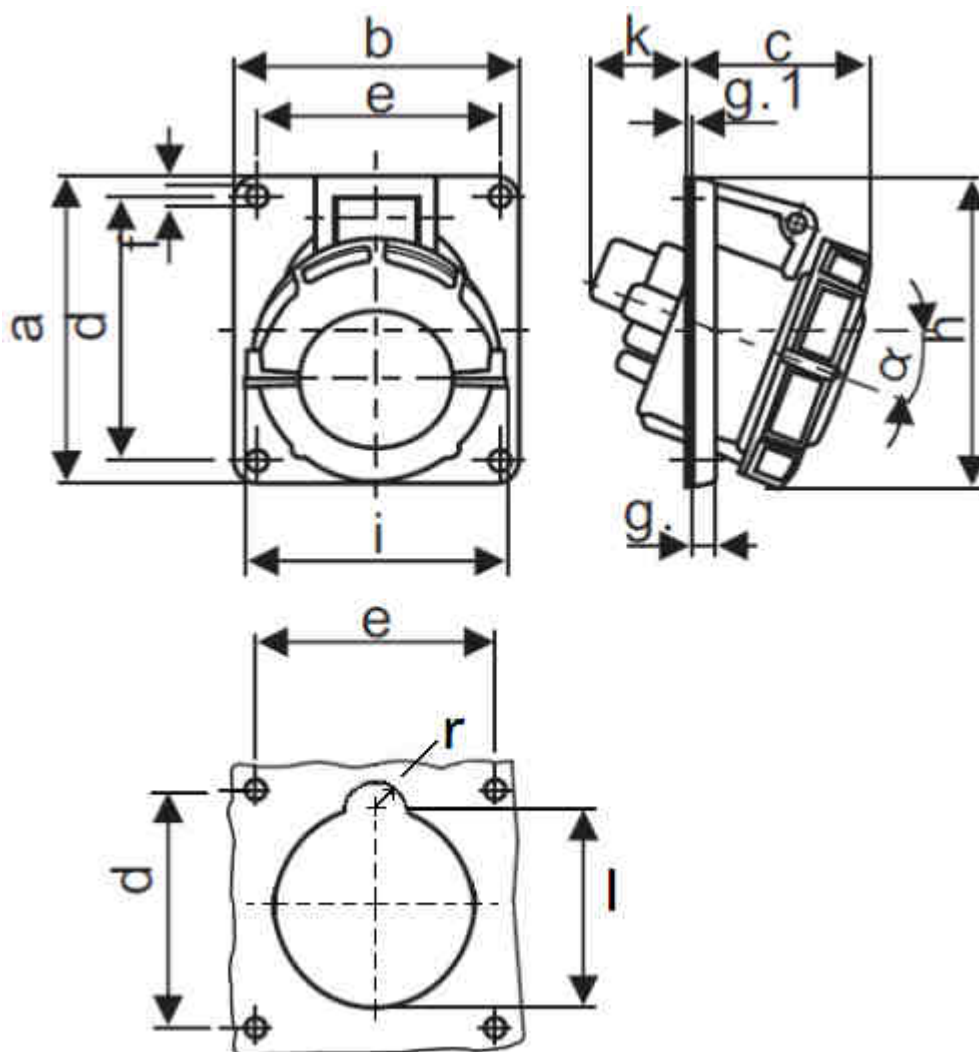
Straight Plugs

EU67P363	IEC309 63A 3 Pin straight plug, IP67
EU67P463	IEC309 63A 4 Pin straight plug, IP67
EU67P563	IEC309 63A 5 Pin straight plug, IP67



EU67P363

Dimensions



in mm

No Poles	a	b	c	d	e	f	g	g 1	h	i	k	l	r
3P	110	106	85	85	77	6.2	12	2	125	117	46	TBA	TBA
4P	110	106	85	85	77	6.2	12	2	125	117	46	TBA	TBA
5P	110	106	85	85	77	6.2	12	2	125	117	46	TBA	TBA

Spec Sheet: IEC309 Panel Socket, Angled 125A – IP67

Part Numbers

Part Number	Description
EU67SA3125	IEC309 125A 3 Pin panel socket, angled, IP67
EU67SA4125	IEC309 125A 4 Pin panel socket, angled, IP67
EU67SA5125	IEC309 125A 5 Pin panel socket, angled, IP67

Specification

Housing

IP	67
Colour	Blue (230V) Red (400V)
Material	Polycarbonate
UV Stabilised	Yes
Conductor cross sectional area	25 - 70mm ²
Weight	1.2kg
Earth Pin Location	3P 6h
	4P 6h
	5P 6h
Socket angle	15 degrees

Dimensions

W x H x D

3P, 4P and 5P	114 x 110 x 142mm
---------------	-------------------

Standard

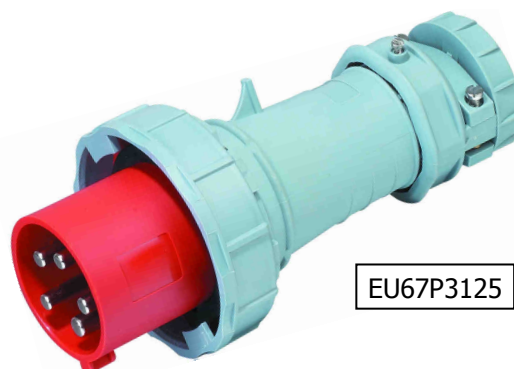
IEC 60309-2



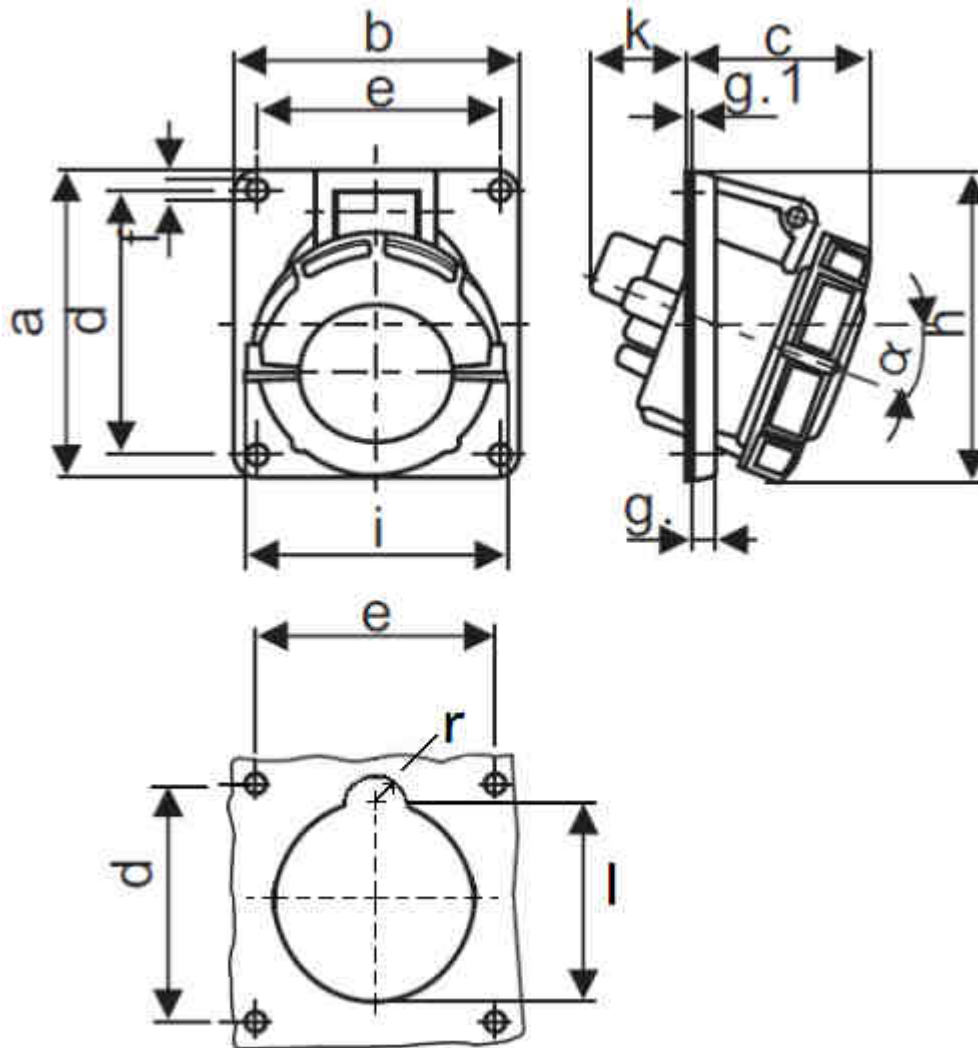
Related Products

Straight Plugs

EU67P3125	IEC309 125A 3 Pin straight plug, IP67
EU67P4125	IEC309 125A 4 Pin straight plug, IP67
EU67P5125	IEC309 125A 5 Pin straight plug, IP67



Dimensions



in mm

No Poles	a	b	c	d	e	f	g	g 1	h	i	k	l	r
3P	114	110	85	90	90	6.2	13	2	135	135	47	95	10
4P	114	110	85	90	90	6.2	13	2	135	135	47	95	10
5P	114	110	85	90	90	6.2	13	2	135	135	47	95	10

Spec Sheet: IEC309 Panel Socket, Straight 16A – IP67

Part Numbers

Part Number	Description
EU67S316	IEC309 16A 3 Pin panel socket straight, IP67
EU67S416	IEC309 16A 4 Pin panel socket straight, IP67
EU67S516	IEC309 16A 5 Pin panel socket straight, IP67

Specification

Housing

IP	67
Colour	Blue (230V) Red (400V)
Material	Polycarbonate
UV Stabilised	Yes
Conductor cross sectional area	1.5 - 4mm ²
Weight	0.22kg
Earth Pin Location	3P 6h
	4P 6h
	5P 6h

Dimensions

	W x H x D
3P, 4P and 5P	75 x 75 x 61mm

Standard

	IEC 60309-2
--	-------------

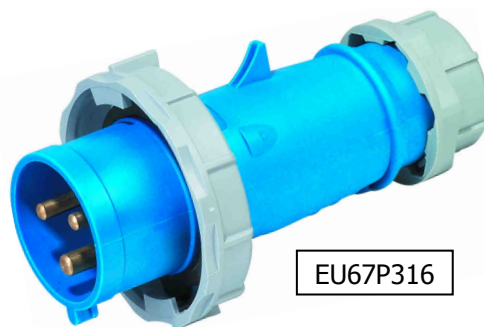


EU67S416

Related Products

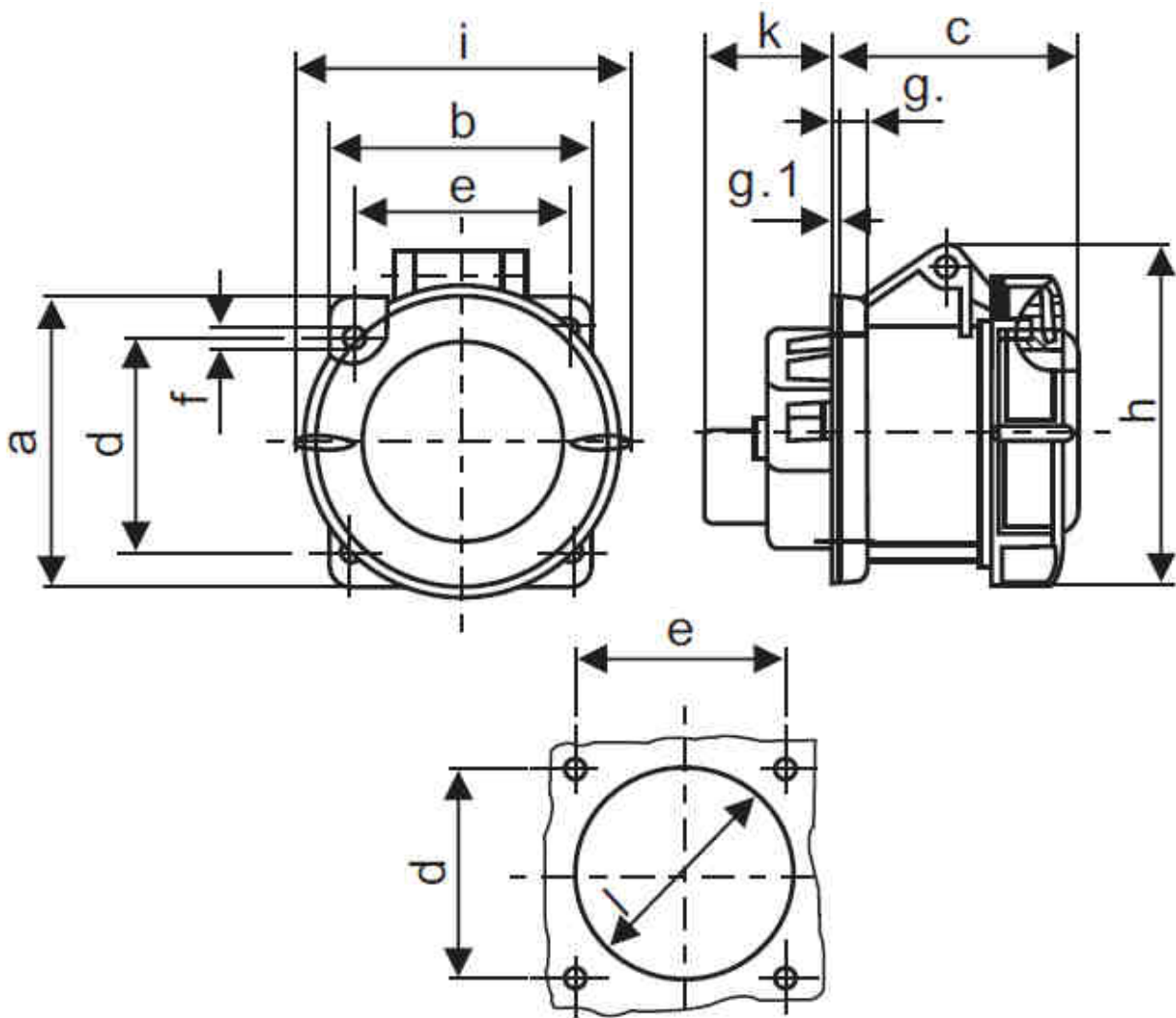
Straight Plugs

EU67P316	IEC309 16A 3 Pin straight plug, IP67
EU67P416	IEC309 16A 4 Pin straight plug, IP67
EU67P516	IEC309 16A 5 Pin straight plug, IP67



EU67P316

Dimensions



in mm

No Poles	a	b	c	d	e	f	g	g 1	h	i	k	l
3P	75	75	60	60	60	5.5	8	2	83	78	26	50
4P	75	75	61	60	60	5.5	8	2	88	85	27	54
5P	75	75	61	60	60	5.5	8	2	95	96	27	57

Spec Sheet: IEC309 Panel Socket, Straight 32A – IP67

Part Numbers

Part Number	Description
EU67S332	IEC309 32A 3 Pin panel socket straight, IP67
EU67S432	IEC309 32A 4 Pin panel socket straight, IP67
EU67S532	IEC309 32A 5 Pin panel socket straight, IP67

Specification

Housing

IP	67
Colour	Blue (230V) Red (400V)
Material	Polycarbonate
UV Stabilised	Yes
Conductor cross sectional area	2.5 - 10mm ²
Weight	0.31kg
Earth Pin Location	3P 6h
	4P 6h
	5P 6h

Dimensions

	W x H x D
3P, 4P and 5P	86 x 86 x 72mm

Standard

	IEC 60309-2
--	-------------

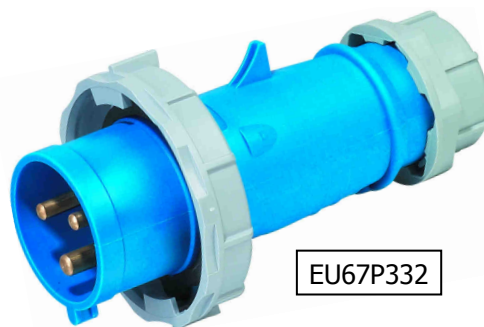


EU67S432

Related Products

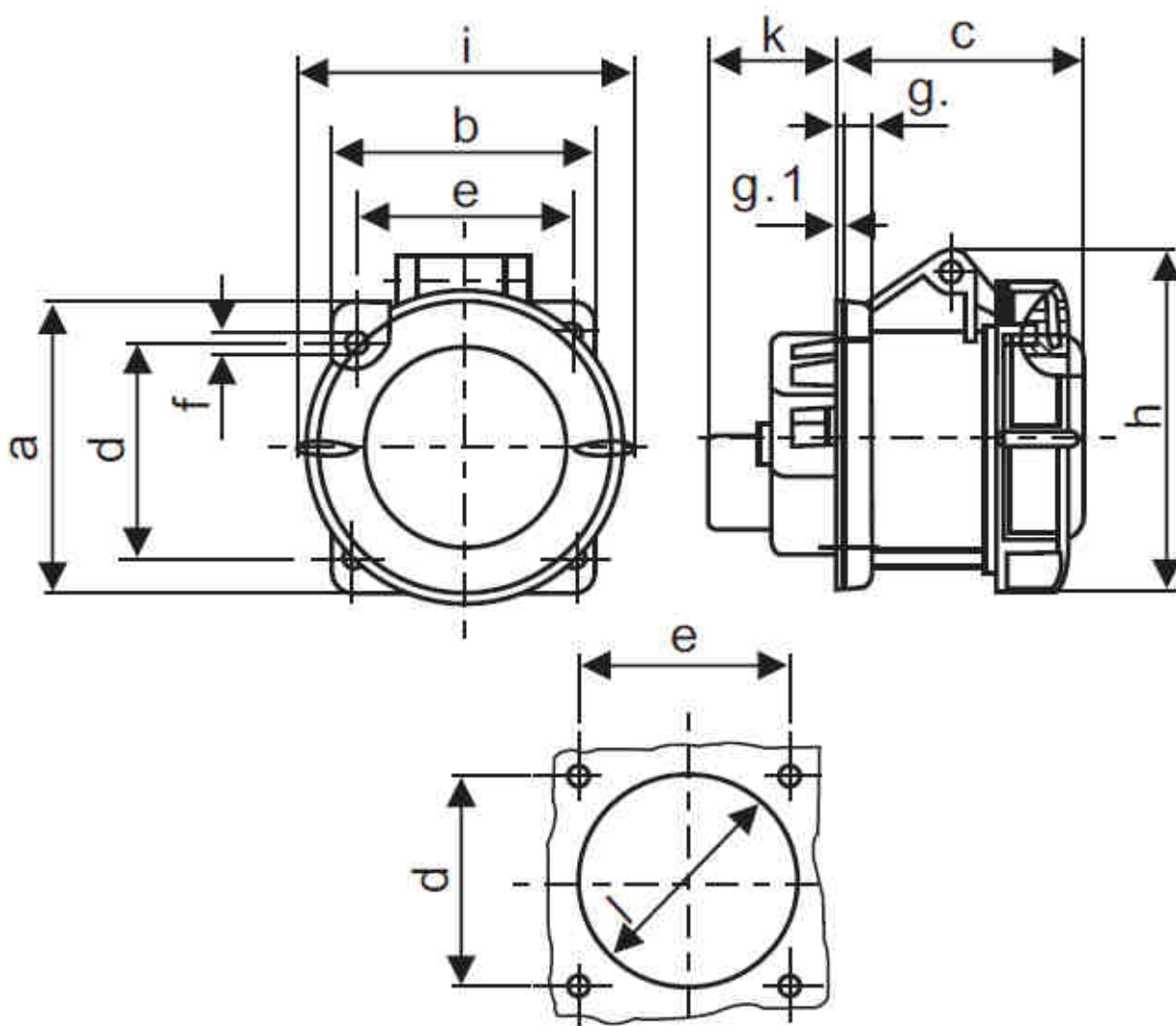
Straight Plugs

EU67P332	IEC309 32A 3 Pin straight plug, IP67
EU67P432	IEC309 32A 4 Pin straight plug, IP67
EU67P532	IEC309 32A 5 Pin straight plug, IP67



EU67P332

Dimensions



in mm

No Poles	a	b	c	d	e	f	g	g 1	h	i	k	l
3P	86	75	60	60	60	5.5	8	2	83	78	26	50
4P	86	75	61	60	60	5.5	8	2	88	85	27	54
5P	86	75	61	60	60	5.5	8	2	95	96	27	57

Spec Sheet: IEC309 Panel Socket, Straight 63A – IP67

Part Numbers

Part Number	Description
EU67S363	IEC309 63A 3 Pin panel socket straight, IP67
EU67S463	IEC309 63A 4 Pin panel socket straight, IP67
EU67S563	IEC309 63A 5 Pin panel socket straight, IP67

Specification

Housing

IP	67
Colour	Blue (230V) Red (400V)
Material	Polycarbonate
UV Stabilised	Yes
Conductor cross sectional area	6 - 25mm ²
Weight	0.66kg
Earth Pin Location	3P 6h
	4P 6h
	5P 6h

Dimensions

Dimensions	W x H x D
3P, 4P and 5P	100 x 107 x 84mm

Standard

Standard	IEC 60309-2
----------	-------------

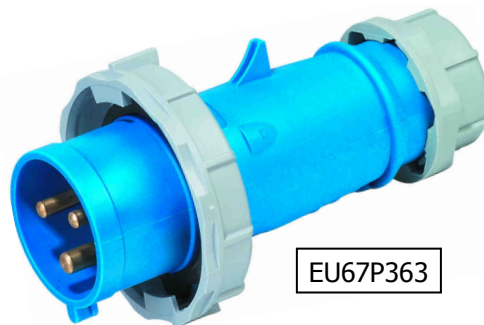


EU67S463

Related Products

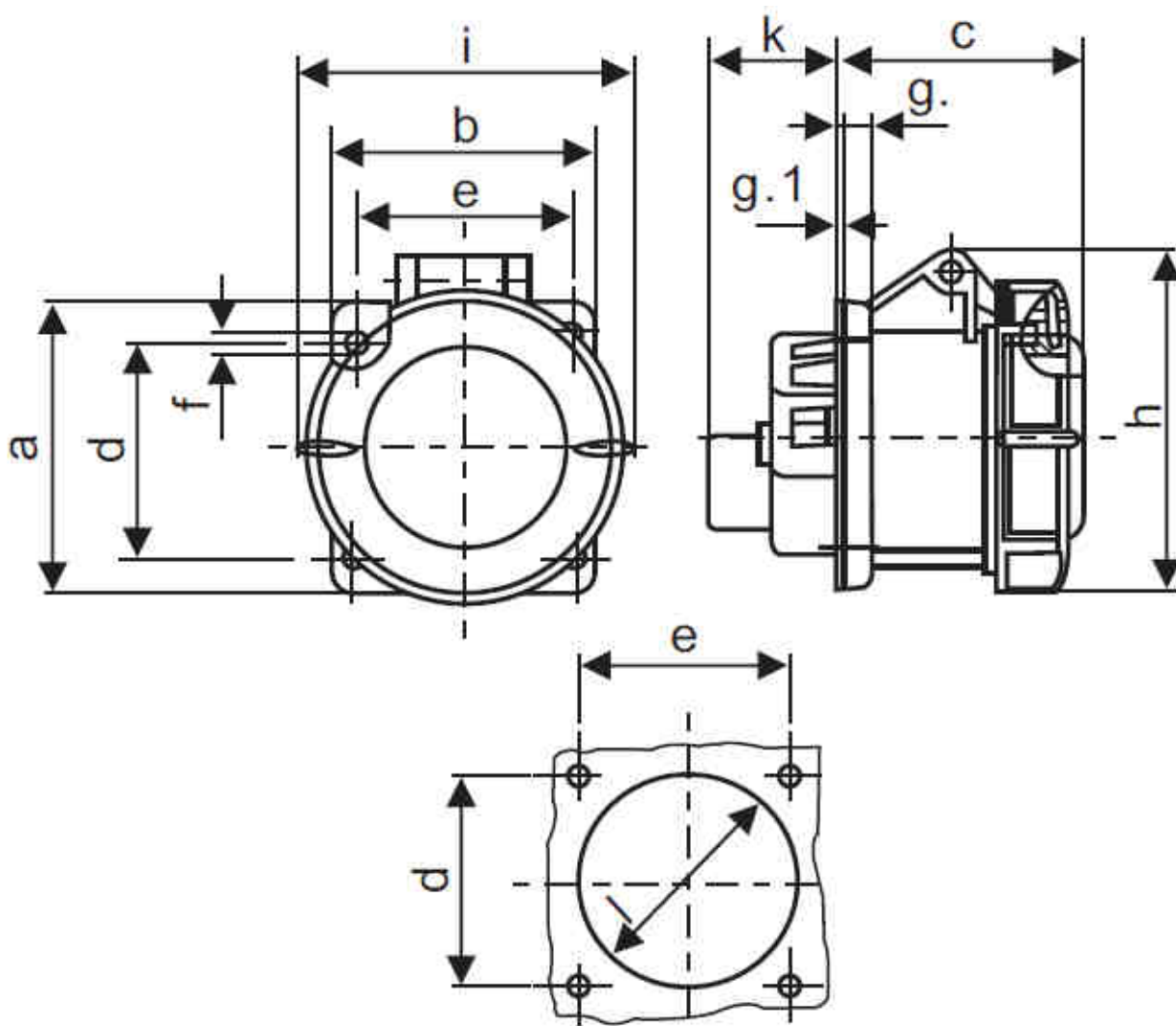
Straight Plugs

EU67P363	IEC309 63A 3 Pin straight plug, IP67
EU67P463	IEC309 63A 4 Pin straight plug, IP67
EU67P563	IEC309 63A 5 Pin straight plug, IP67



EU67P363

Dimensions



in mm

No Poles	a	b	c	d	e	f	g	g 1	h	i	k	l
3P	107	100	84	85	77	6.5	12	2	113	118	55	88
4P	107	100	84	85	77	6.5	12	2	113	118	55	88
5P	107	100	84	85	77	6.5	12	2	113	118	55	88

Spec Sheet: IEC309 Panel Socket, Straight 125A – IP67

Part Numbers

Part Number	Description
EU67S3125	IEC309 125A 3 Pin panel socket straight, IP67
EU67S4125	IEC309 125A 4 Pin panel socket straight, IP67
EU67S5125	IEC309 125A 5 Pin panel socket straight, IP67

Specification

Housing

IP	67
Colour	Blue (230V) Red (400V)
Material	Polycarbonate
UV Stabilised	Yes
Conductor cross sectional area	25 - 70mm ²
Weight	1.3kg
Earth Pin Location	3P 6h
	4P 6h
	5P 6h

Dimensions

W x H x D

3P, 4P and 5P	130 x 130 x 124mm
---------------	-------------------

Standard

IEC 60309-2

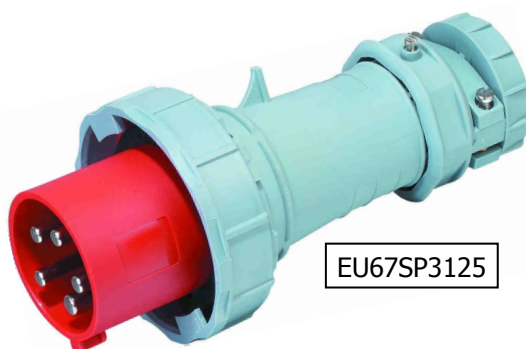


EU67S4125

Related Products

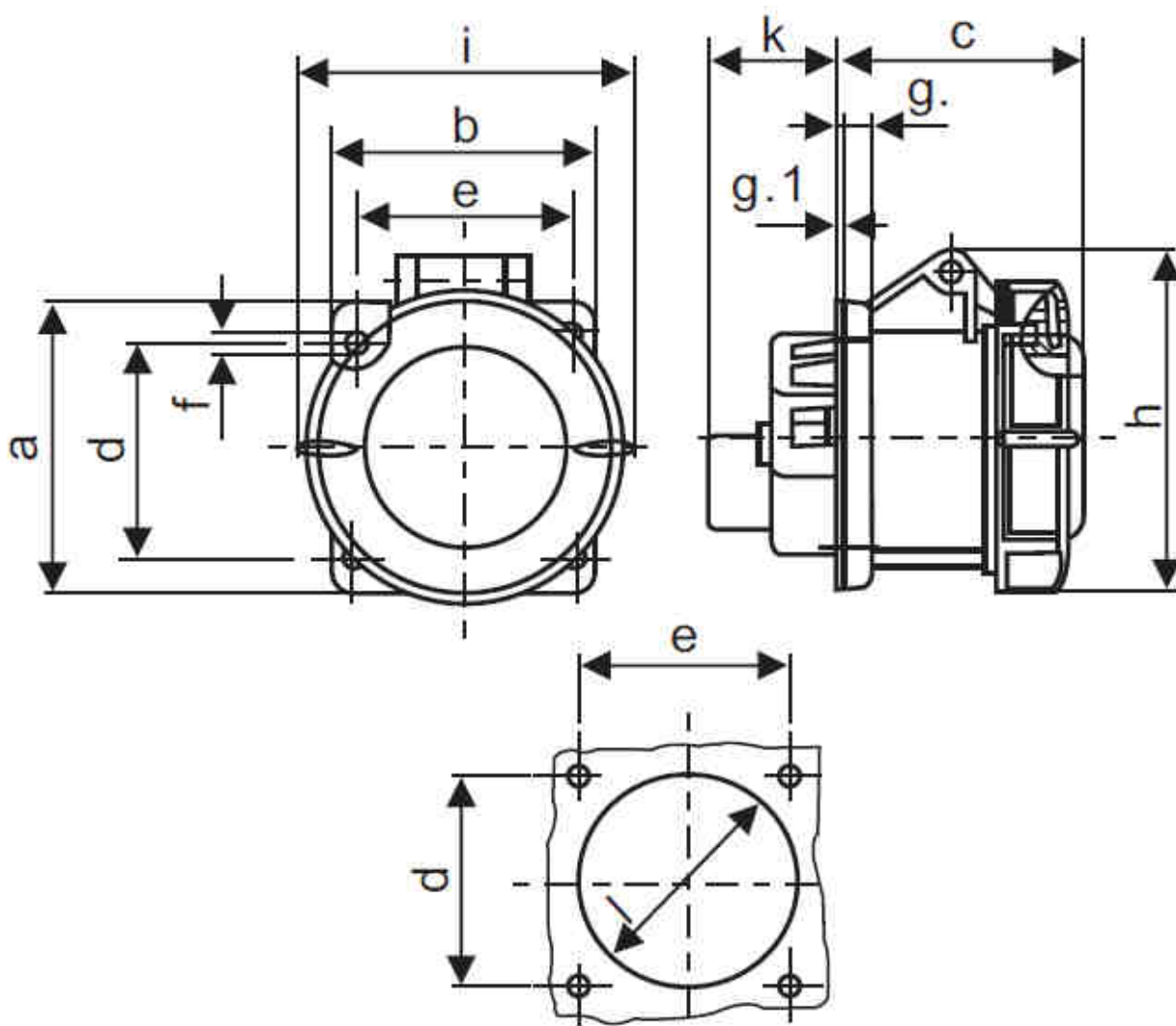
Straight Plugs

EU67P3125	IEC309 125A 3 Pin straight plug, IP67
EU67P4125	IEC309 125A 4 Pin straight plug, IP67
EU67P5125	IEC309 125A 5 Pin straight plug, IP67



EU67SP3125

Dimensions



in mm

No Poles	a	b	c	d	e	f	g	g 1	h	i	k	l
3P	130	130	124	104	104	6.5	18	2	122	135	43	95
4P	130	130	124	104	104	6.5	18	2	122	135	43	95
5P	130	130	124	104	104	6.5	18	2	122	135	43	95

Spec Sheet: IEC309 Wall Socket 16A – IP67

Part Numbers

Part Number	Description
EU67WS316	IEC309 16A 3 Pin wall socket, IP67
EU67WS416	IEC309 16A 4 Pin wall socket, IP67
EU67WS516	IEC309 16A 5 Pin wall socket, IP67

Specification

Housing

IP	67
Colour	Blue (230V) Red (400V)
Material	Polycarbonate
UV Stabilised	Yes
Conductor cross sectional area	1.5 - 4mm ²
Weight	0.32kg
Earth Pin Location	3P 6h
	4P 6h
	5P 6h

Dimensions

W x H x D

3P, 4P and 5P	102 x 132 x 129mm
---------------	-------------------

Gland Entry sizes

3P, 4P and 5P	Top: 1 x M25
	Bottom: 1 x M25 (blind)
Included	1 x M25 gland
Maximum Cable diameter	18mm

Standard

IEC 60309-2

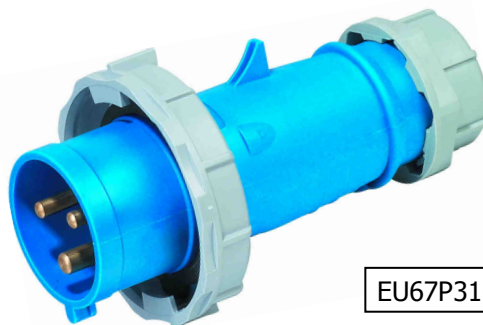


EU67ES316

Related Products

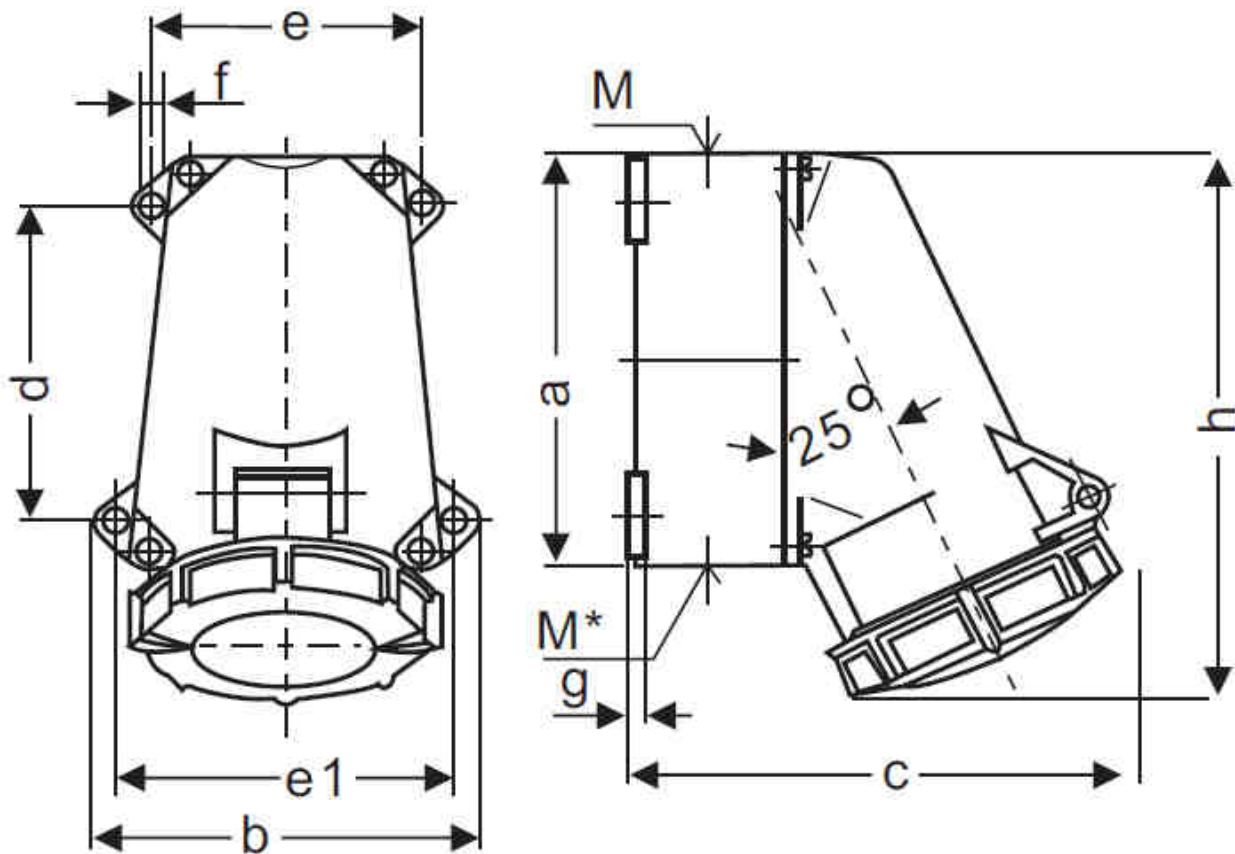
Straight Plugs

EU67P316	IEC309 16A 3 Pin straight plug, IP67
EU67P416	IEC309 16A 4 Pin straight plug, IP67
EU67P516	IEC309 16A 5 Pin straight plug, IP67



EU67P316

Dimensions



No Poles	a	b	c	d	e	e 1	f	g	h	m	m*
3P	95	102	115	64.2	77.5	88	5.5	5	128	M25	M25
4P	95	102	124	64.2	77.5	88	5.5	5	128	M25	M25
5P	95	102	129	64.2	77.5	88	5.5	5	132	M25	M25

Spec Sheet: IEC309 Wall Socket 32A – IP67

Part Numbers

Part Number	Description
EU67WS332	IEC309 32A 3 Pin wall socket, IP67
EU67WS432	IEC309 32A 4 Pin wall socket, IP67
EU67WS532	IEC309 32A 5 Pin wall socket, IP67

Specification

Housing

IP	67
Colour	Blue (230V) Red (400V)
Material	Polycarbonate
UV Stabilised	Yes
Conductor cross sectional area	2.5 - 10mm ²
Weight	0.45kg
Earth Pin Location	3P 6h
	4P 6h
	5P 6h

Dimensions

W x H x D

3P, 4P and 5P	112 x 160 x 150mm
---------------	-------------------

Gland Entry sizes

3P, 4P and 5P	Top: 1 x M32
	Bottom: 1 x M32 (blind)
Included	1 x M32 gland
Maximum Cable diameter	25mm

Standard

IEC 60309-2

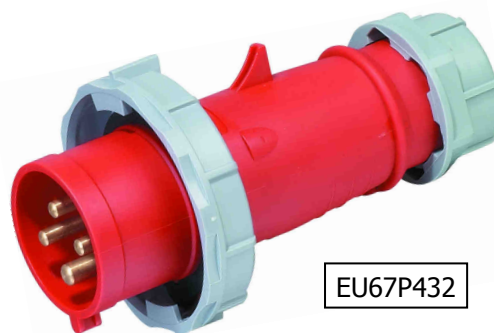


EU67ES432

Related Products

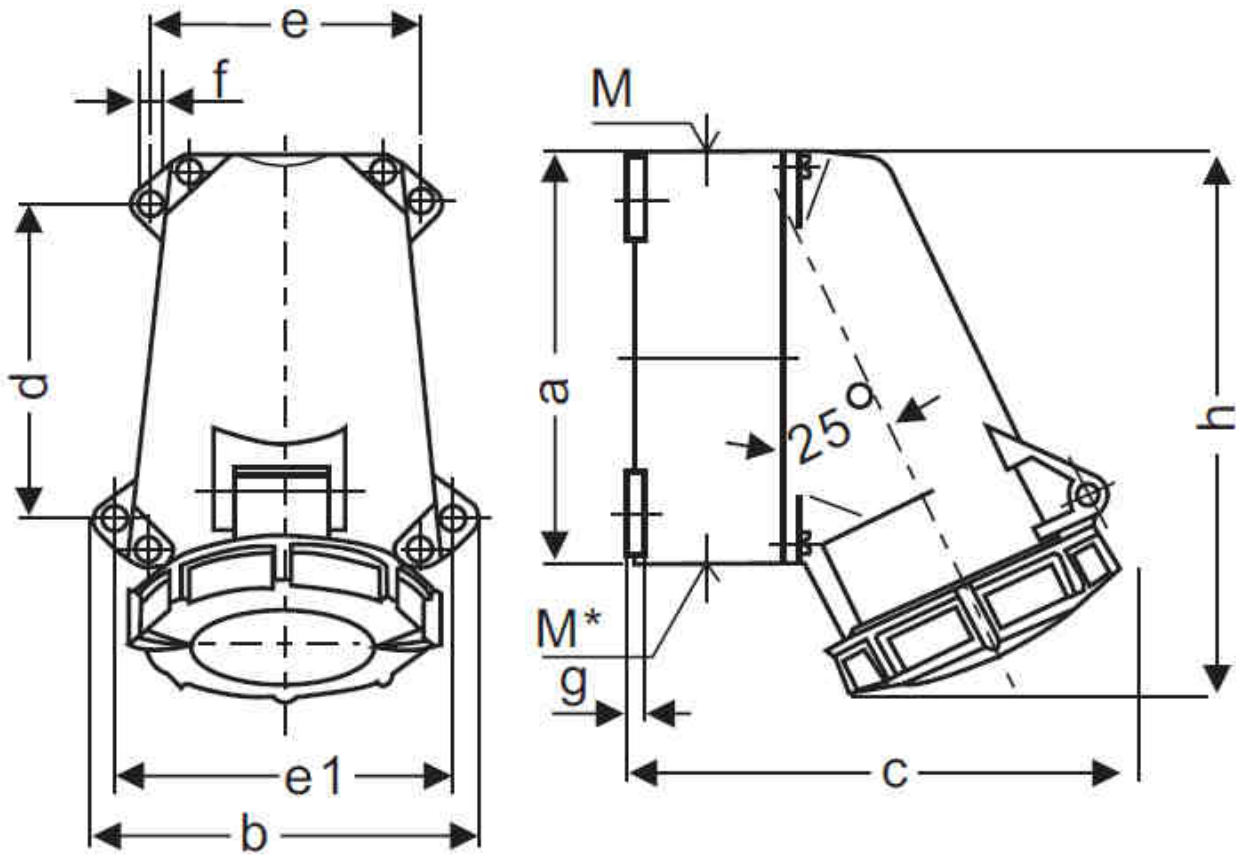
Straight Plugs

EU67P332	IEC309 32A 3 Pin straight plug, IP67
EU67P432	IEC309 32A 4 Pin straight plug, IP67
EU67P532	IEC309 32A 5 Pin straight plug, IP67



EU67P432

Dimensions



No Poles	a	b	c	d	e	e 1	f	g	h	m	m*
3P	120	112	143	90.2	79	98.5	5.5	5	160	M32	M32
4P	120	112	143	90.2	79	98.5	5.5	5	160	M32	M32
5P	120	112	150	90.2	79	98.5	5.5	5	160	M32	M32

Spec Sheet: IEC309 Wall Socket 63A – IP67

Part Numbers

Part Number	Description
EU67WS363	IEC309 63A 3 Pin wall socket, IP67
EU67WS463	IEC309 63A 4 Pin wall socket, IP67
EU67WS563	IEC309 63A 5 Pin wall socket, IP67

Specification

Housing

IP	67
Colour	Blue (230V) Red (400V)
Material	Polycarbonate
UV Stabilised	Yes
Conductor cross sectional area	6 - 25mm ²
Weight	1.1kg
Earth Pin Location	3P 6h
	4P 6h
	5P 6h

Dimensions

W x H x D

3P, 4P and 5P	157 x 216 x 169mm
---------------	-------------------

Gland Entry sizes

3P, 4P and 5P	Top: 1 x M40
	Bottom: 2 x M40 (blind)
Included	1 x M40 gland
Maximum Cable diameter	32mm

Standard

IEC 60309-2

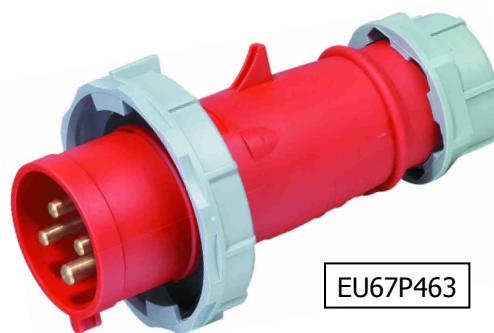


EU67ES463

Related Products

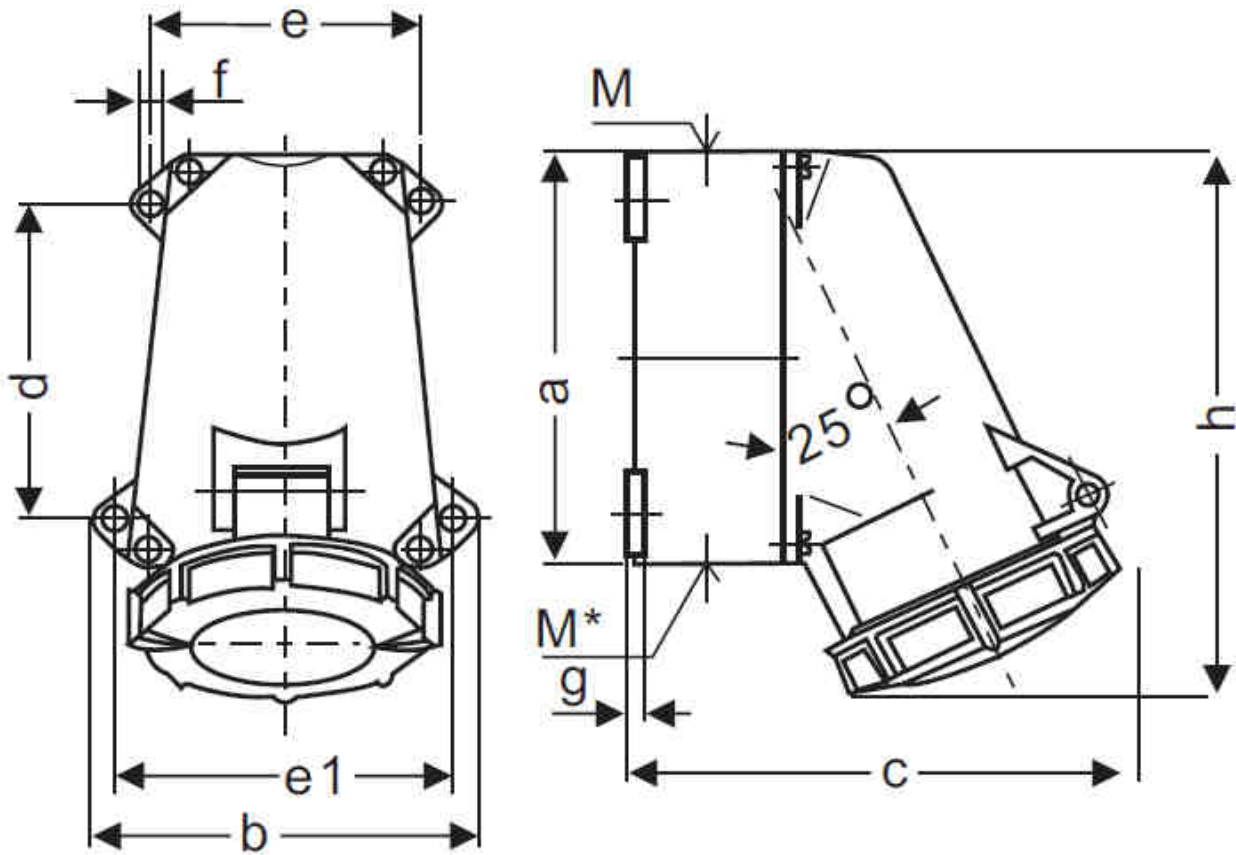
Straight Plugs

EU67P363	IEC309 63A 3 Pin straight plug, IP67
EU67P463	IEC309 63A 4 Pin straight plug, IP67
EU67P563	IEC309 63A 5 Pin straight plug, IP67



EU67P463

Dimensions



No Poles	a	b	c	d	e	e 1	f	g	h	m	m*
3P	171	157	169	133	108	136	6	5	216	M40	M40
4P	171	157	169	133	108	136	6	5	216	M40	M40
5P	171	157	169	133	108	136	6	5	216	M40	M40

Spec Sheet: IEC309 Wall Socket 125A – IP67

Part Numbers

Part Number	Description
EU67WS3125	IEC309 125A 3 Pin wall socket, IP67
EU67WS4125	IEC309 125A 4 Pin wall socket, IP67
EU67WS5125	IEC309 125A 5 Pin wall socket, IP67

Specification

Housing

IP	67
Colour	Blue (230V) Red (400V)
Material	Polycarbonate
UV Stabilised	Yes
Conductor cross sectional area	25 - 35mm ²
Weight	2.1kg
Earth Pin Location	3P 6h
	4P 6h
	5P 6h

Dimensions

W x H x D

3P, 4P and 5P	163 x 313 x 203mm
---------------	-------------------

Gland Entry sizes

3P, 4P and 5P	Top: 1 x M50 Bottom: 1 x M50
Included	1 x M50 gland
Maximum Cable diameter	38mm

Standard

IEC 60309-2

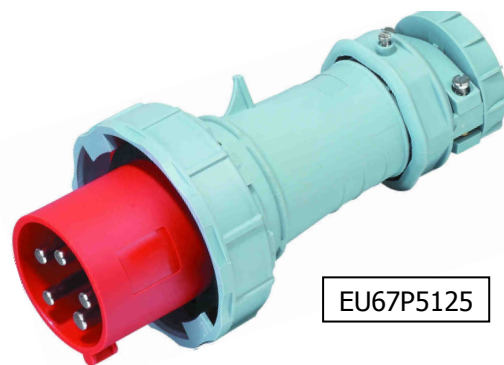


EU67ES5125

Related Products

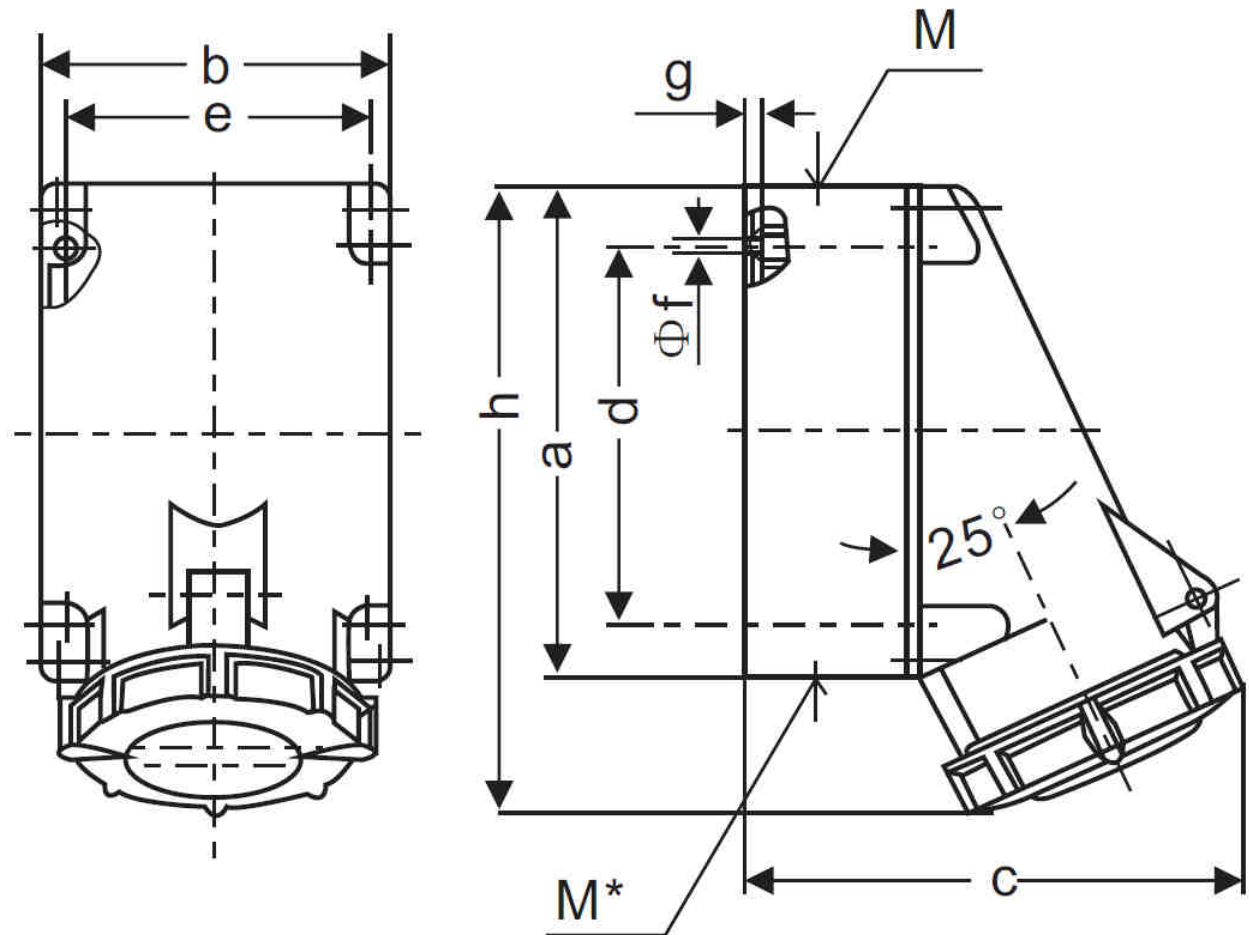
Straight Plugs

EU67P3125	IEC309 125A 3 Pin straight plug, IP67
EU67P4125	IEC309 125A 4 Pin straight plug, IP67
EU67P5125	IEC309 125A 5 Pin straight plug, IP67



EU67P5125

Dimensions



in mm

No Poles	a	b	c	d	e	f	g	h	m	m*
3P	264	163	203	240	140	8.1	8	313	M50	M50
4P	264	163	203	240	140	8.1	8	313	M50	M50
5P	264	163	203	240	140	8.1	8	313	M50	M50

IEC 309 Industrial Switchgear

The IPD **EU67** series is an International range of industrial plugs and sockets from 16A up to 125A. The range meets a degree of protection of up to IP67.

This degree of protection provides excellent resistance to all types of environmental conditions.

The IPD **EU67** series can be used in a wide variety of applications

- IT data centers
- Food industry hose down areas
- Sporting complexes
- Heavy and light industry
- Airports, mobile or portable equipment
- Marine such as Quays, Docks, Piers and refrigerated containers (special 3h)
- Agriculture pumping and drying equipment



Quality / Standards:

Technical performance of the **EU67** series of plugs and sockets complies with IEC 60309 parts 1 and parts 2. Part 1 of the Standard is general requirements with Part 2 covering dimensional interchangeability of pins and configurations. The main purpose of these standards is to prevent accidental or deliberate misalignment of plugs and sockets which could lead to personal or equipment harm.

For quality management the **EU67** series is manufactured under ISO 9001:2000 International Standards for Quality Assurance.

Range:

IPD offers a complete range of:

- Plugs and extension sockets 16A to 125A.
- Appliance inlets 16A to 125A
- Reefer container Plugs, Ext Sockets and Switched Sockets
- Wall sockets outlets 16A to 125A
- Panel Sockets straight and angled 16A to 125A
- Switched sockets outlets 16A to 125A

Protection Degree:

The standard sets a rating for appliances which is based on their degree of protection against the ingress of liquid or solid objects. For the EU67 series it achieves a protection level of IP67.

IP67 – Plugs and sockets protected the effects of immersion, fitted with a locking ring with bayonet coupling

The testing is carried out with:

- On sockets with the lid closed or plug fully inserted
- On plugs, when fully inserted into the socket

Design:

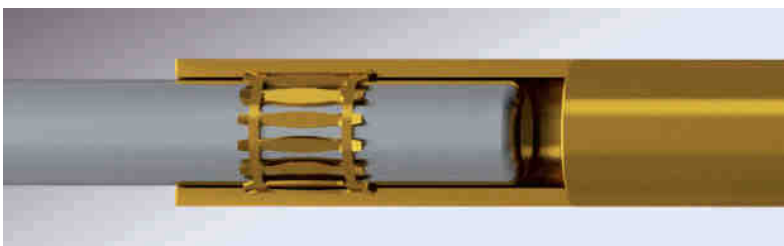
63A Contacts

- Soft contact design
- Self-cleaning
- Good electrical characteristics
- Reduced friction
- Easy to plug-in



125A Contacts

- Cage-type spring contact
- Self-cleaning
- Good electrical characteristics
- Reduced friction
- Easy to plug-in



Cable gland

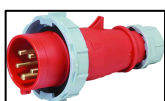
- Self-adjusting flange
- Wide range of cable diameters
- High IP rating



Safety / Installation

- Installation by qualified personnel only.
- Strip and prepared cable ends for termination in screw terminals.
- Terminals should be tight to prevent overheating.
- Regular inspection by suitable qualified personnel.
- Replace worn or damaged parts.
- Ensure gaskets are fitted correctly to ensure a good seal to maintain IP rating.
- Glue unused entries to maintain IP rating.

Definitions:



Plug

The part fixed or designed to be fixed to the end of a flexible cable, which is attached to an appliance or to a connector.



Extension Socket

The part fixed or designed to be fixed to the end of a flexible cable.



Socket

The panel mount part designed to be connected to an electric circuit, angled or straight connections.



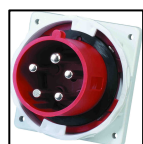
Socket, wall

The panel mount part designed to be connected to an electric circuit, surface mounting.



Switched Sockets

As the name suggests a combination of a load break switch and a interlocked socket outlet. Plug must be inserted before the switch can be turned on, safety feature.



Appliance inlet

The panel mount part built into or fastened to an appliance, designed to accept extension sockets.



Reefer

Common word for Refrigerated Shipping Containers. These plugs and sockets have earth pin at 3H (3 o'clock) so cannot be interchanged with standard industrial range which have the earth at 6 o'clock (6H).

Electrical Characteristics:

Insulation voltage:	500V 50-60Hz
Testing:	CE certification China Quality Certification Centre Beijing.
Standards:	IEC 309-1 IEC 309-2 IEC 947-3 (switch)

Materials Specification:

Pins:	Nickel plated brass
Socket:	Brass
Housing:	Self-extinguishing thermo plastic
Seal:	Non-ageing EPDM
External Screws:	Stainless Steel

Options:

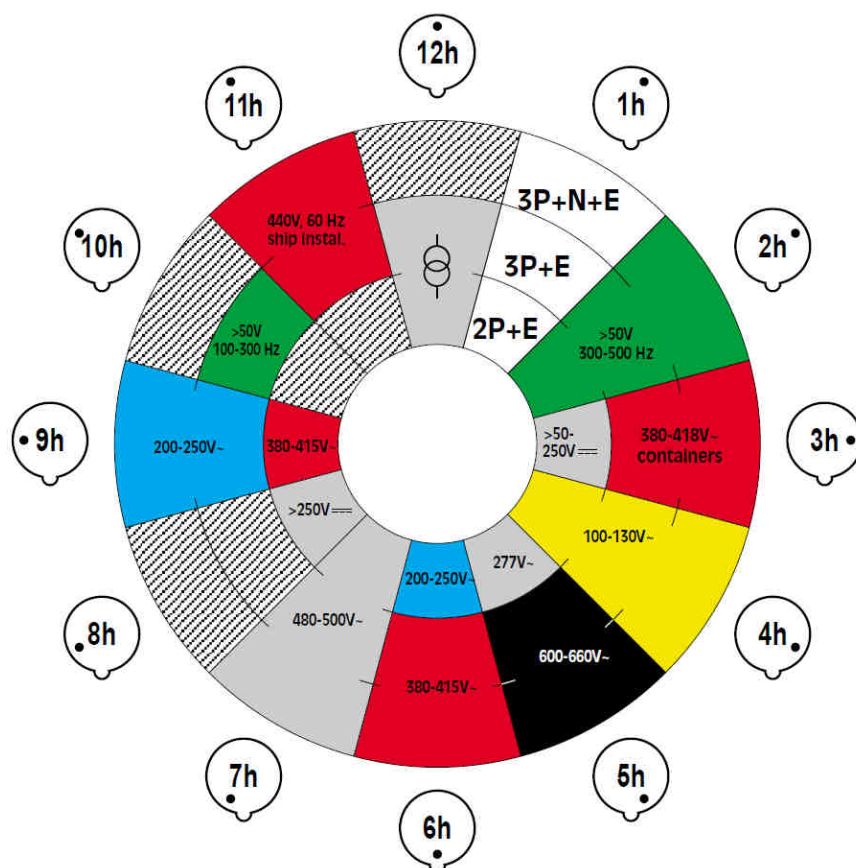
Available on request, optional multiple outlets designs with MCB or RCD protection. Mounting in GE's APO series enclosures the multi-series provide high IP with the safety of RCD protection.

Ask your IPD rep for details.....

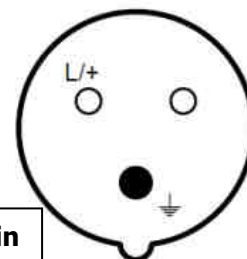


Pin Configuration:

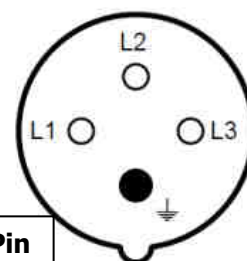
Viewing the socket from the front, the clock face position H is established by observing the position of the earth contact with respect to the major keyway which is situated at 6 O'clock.



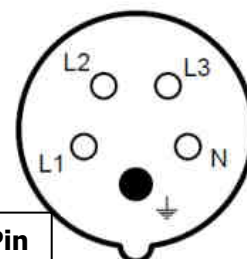
Socket (front)



3 Pin



4 Pin



5 Pin