

WARRANTY

The product you have purchased is covered by a warranty in the terms below. This warranty is provided by Specialised Lighting Solutions (SLS) ("we", "SLS"). The warranty applies for a period of **3 years** from the date of your purchase.

Specialised Lighting Solutions warrants that the product will be substantially free from defects for the

warranty period. To the extent permitted at law, and subject to the following paragraph, SLS will, at its election repair, replace or provide credit in respect of goods that are defective in the warranty period.

Our goods come with guarantees that cannot be excluded under the Australian Consumer Law. You are entitled to a replacement or refund for a "major failure" and compensation for any other reasonably

foreseeable loss or damage. You are also entitled to have the goods repaired or replaced if goods fail to be of acceptable quality and the failure does not amount to a major failure.

The term "major failure" is defined in the Australian Consumer Law and includes but is not limited to:

- Where the goods are substantially unfit for the purpose for which such goods are commonly supplied and cannot easily and within a reasonable time be remedied to make them fit for such a purpose; or
- Where the goods are unsafe.

The benefits provided by this warranty are in addition to any other rights and remedies of the consumer under any law in relation to the goods or service to which the warranty relates.

Claims for incidental costs incurred, or to be incurred, as a consequence of a major failure of the item will first have to be discussed with us, they may or may not be claimable under the warranty.

Exclusions:

The warranty does not cover defects or problems that arise due to you causing the product to become of unacceptable quality, such as failure to take reasonable care of the product or damage caused by abnormal use of the product. To the extent permissible at law, it does not cover damage caused by dismantling of the product or attempts at repairs by persons other than SLS or its authorised repairers, or by your use of the product contrary to any usage recommendations of SLS.

Further, the warranty does not cover defects where you were informed of the issue before agreeing to acquire the goods or you examined the goods before accepting them and that examination ought reasonably have revealed the position.

How to claim under the warranty:

For the warranty to be honoured you must submit the faulty product, together with proof of purchase to the original place of purchase or sent to SLS, Warranty Claims 102-108 Williams Road, Dandenong, Victoria 3175. For telephone enquiries contact 1300 302 852. For email enquiries contact: sls@slsgrp.com.au

You must bear the costs associated with making the warranty claim. Postage or freight costs incurred in returning the item to us do not form part of this warranty.

We will assess the defect and, as long as none of the exclusions above apply, will repair, replace, provide a credit or refund for the product in accordance with the above. If applicable we will return the repaired or replaced product to you by the channel through which it was submitted to us.



LED FLOODLIGHT

ALXLEDFLD211W	FLOODLIGHT	LED 2X11W BLK
ALXLEDFLD211WS	FLOODLIGHT	LED 2X11W W-SENSOR BLK
ALXLEDFLD111W	FLOODLIGHT	LED 1X11W BLK
ALXLEDFLD111WS	FLOODLIGHT	LED 1X11W W-SENSOR BLK

INTRODUCTION:

The Alphalux range of light fittings have been established as one of the most trusted light fittings in the Australian market. The latest generation of LED floodlights have been designed in consultation with our large client base of installers. Feedback from installers combined with over 20 years of experience in light fittings have created a comprehensive range of high quality LED floodlight solutions.

The Alphalux range of LED floodlights include the following features:

- Energy Efficient ---- 80% energy saving compared to traditional lights
- IP54 weaterproof
- 30,000 hours LED life expectancy
- Heavy duty plastic housing
- Fully adjustable head
- Latest generation LED technology
- Modern design

INSTALLATION LOCATION:

- For best results, fix the floodlight on a solid surface, 1.8 – 2Metres above the ground. (8MTR COVERAGE)
- A recommended location is under the house eaves.
- **Installation consideration for sensor version:**
 - Avoid aiming the motion sensor at pools, heating vents or objects that may change temperature rapidly.
 - Try to avoid pointing the unit at trees or shrubs or where passing pets may be detected.
 - Prior to mounting, keep in mind that the motion sensor is most sensitive to the motion, which is across the detection field and less sensitive to the motion, which moves directly towards the detector

INSTALLATION / WIRING:

- Remove the screw at the bottom of the body / base with a Philips screwdriver. Separate the body from the base.
- (The terminal block is located in the body of the fitting).
- Feed the cable through the seal in the base of the unit and fix the base to the wall via the internal screws holes, using the screws / anchors provided.
- Wire the fitting according to the wiring diagram in Fig 1 & tighten the terminal screws.
- Fix the body of the fitting to the base by hinging the top in first then pushing the body into the base and securing the screw. Ensure any excess cable does not obstruct when fitting.
- Once completed, position the head of fitting (and sensor if attached) in the directions required.
- Follow the instructions (ON pages 2) for adjusting and positioning the PIR sensor for correct operation.

Fig 1

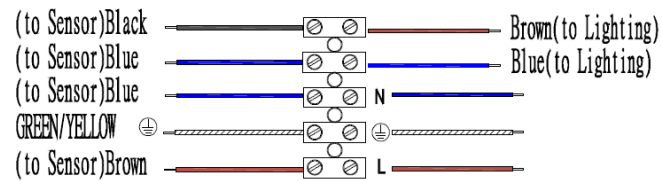
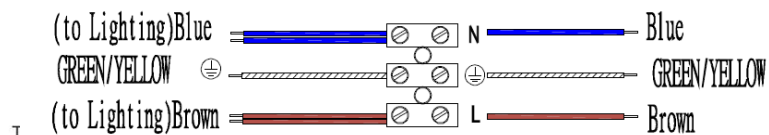
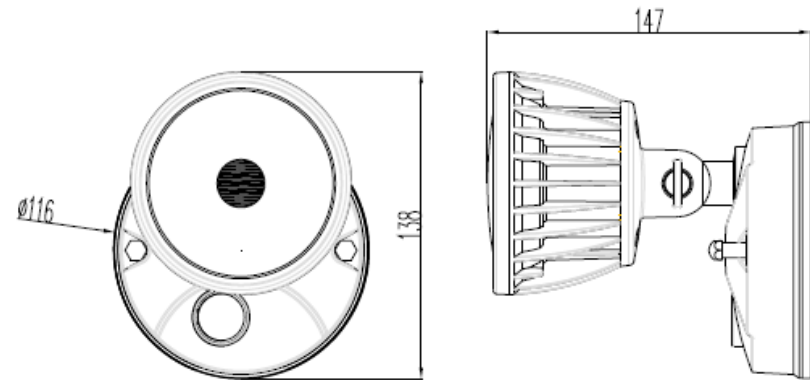


Fig 2

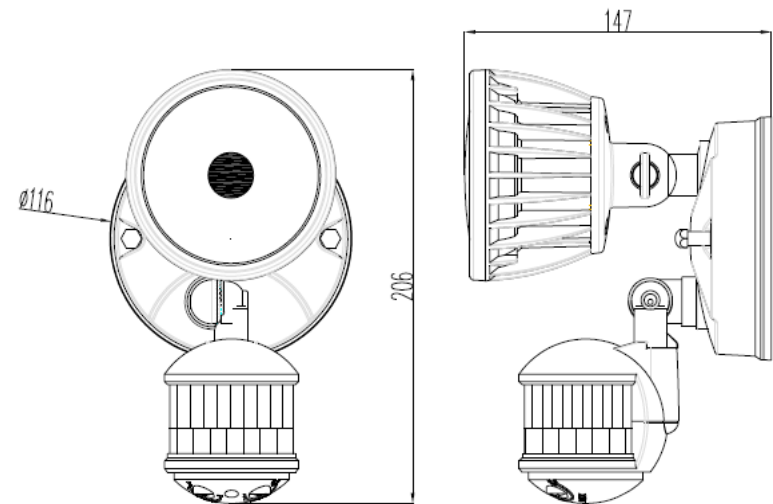


OVERALL DIMENSIONS

ALXLEDFLD111W

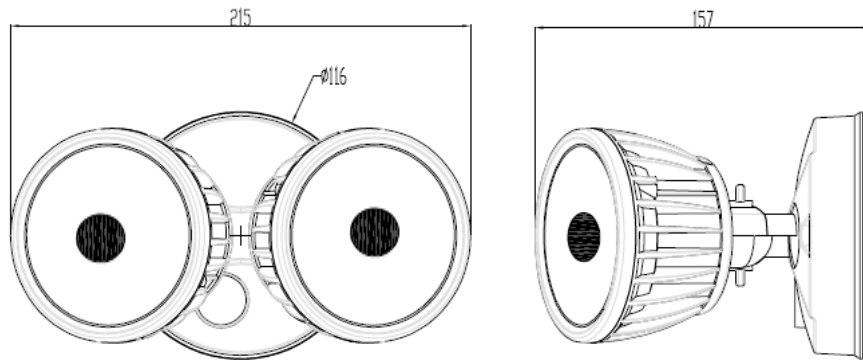


ALXLEDFLD111WS

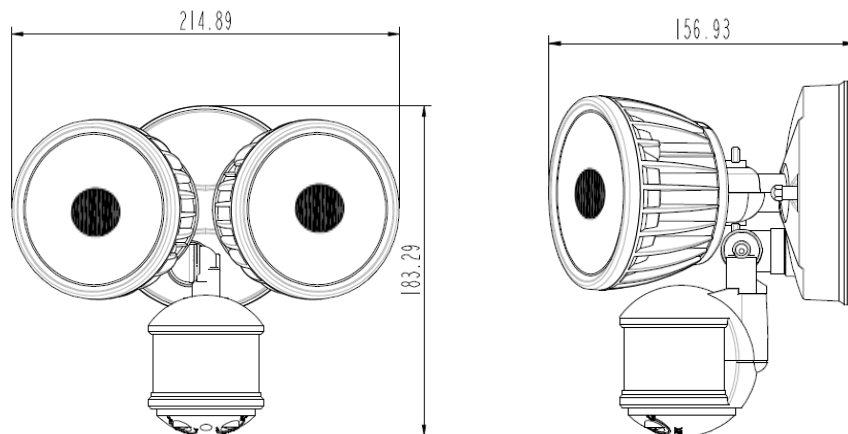


OVERALL DIMENSIONS

ALXLEDFLD211W



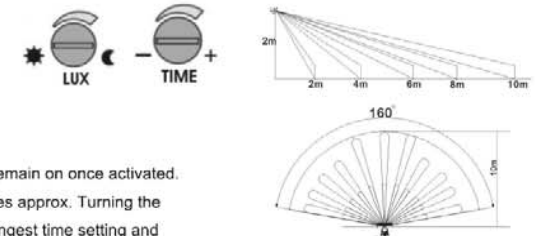
ALXLEDFLD211WS



INSTRUCTIONS:

PIR ADJUSTMENT (For Sensor Version)

On the base of the PIR there are two dials:



TIME DIAL

This dial controls how long the light will remain on once activated. It will operate from 5 Seconds to 5 Minutes approx. Turning the dial fully clockwise will set the unit to its longest time setting and fully anti-clockwise will set it at its shortest setting.

DAYLIGHT ADJUSTMENT DIAL (LUX)

This dial sets the floodlight to be activated at different light levels. To set the light to activate only after dark, wait until dusk and turn the dial completely anti-clockwise. Slowly turn the dial clockwise until the light comes on. The light will now activate at the set light level.

Detection Pattern

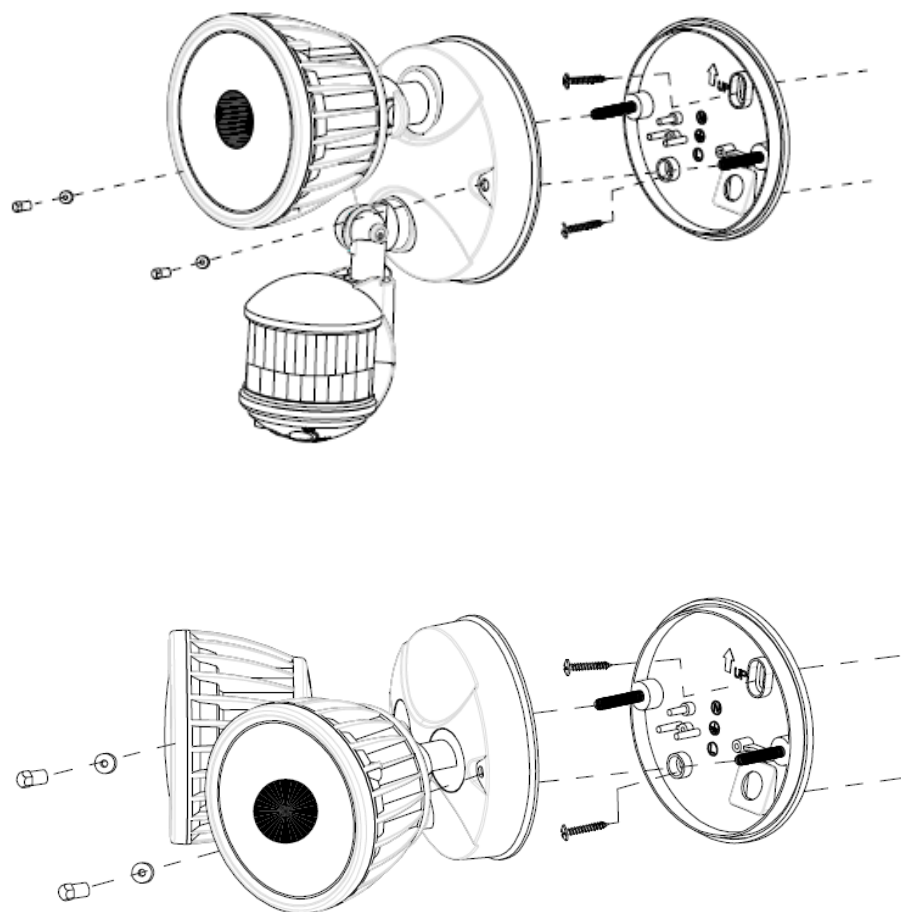
MANUAL OVERRIDE

To override the AUTO setting and switch to MANUAL, where the light will remain on permanently simply switch the light OFF then ON within two seconds. To return the unit to AUTO mode switch the light OFF then wait for fifteen seconds and switch the unit back on.


Note: If the unit remains on it may have gone into Manual Override mode, to return to auto detection mode see above.

Please be aware that PIR detectors are more sensitive to movement across them than they are to movement towards them. This should be considered when positioning during installation

MOUNTING DIAGRAM



TECHNICAL SPECIFICATIONS

Characteristic	Item			
	ALXLEDFLD111W	ALXLEDFLD211W	ALXLEDFLD111WS	ALXLEDFLD211WS
Dimension (mm)	140x116x138mm	220x116x160mm	140x116x206mm	220x190x160mm
weight (Kg)	0.44	0.76	0.59	0.9
Led Power (W)	10.5	22.1	10.7	22.6
Current Rating	0.051A	0.107A	0.056A	0.111A
Detection method	X	X	PIR	PIR
Sensor range	X	X	15MX240 Degree	15MX240 Degree
Time adjustment	X	X	5s~7m	5s~7m
Beam Angle	120 degree			
Rated Voltage	230~240V a.c.			
CCT	4000K			
CRI	>75			
Power Factor	>0.9			
Rated Frequency	50Hz			
Diffuser Material	Plastic			
Internal Wiring	18AWG			
IP rating	IP54			
Operating Trmp	-20 ~ +50°C			
Standards	EN55015 : AS/NZS60598			
Certification	 5073			