

# PRODUCT DATASHEET

## HE SL 14 W/840

SMARTLUX T5 HE | Tubular fluorescent lamps 16 mm, high efficiency



## TECHNICAL DATA

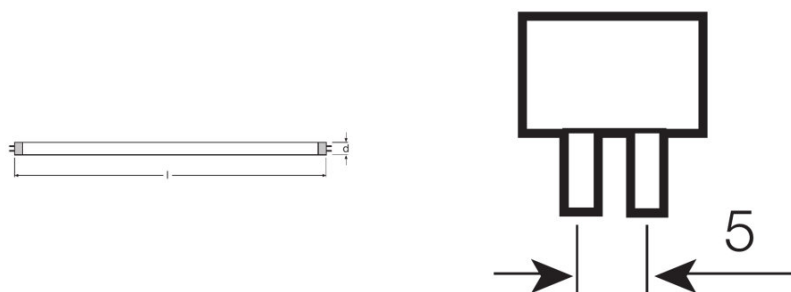
### Electrical data

Nominal voltage	220 V
Rated lamp efficacy (HF data 25 °C)	86 lm/W
Rated wattage	14.00 W
Nominal wattage	14.00 W

### Photometrical data

Color rendering index Ra	≥80
Rated luminous flux	1200 lm
Luminous flux at 25 °C	1200 lm
Luminous flux at 35 °C	1350 lm
Light color	840
Rated color temperature	4000 K
Nominal luminous flux	1200 lm
Light color (designation)	LUMILUX Cool White
Rated LLMF at 2,000 h	0.95
Rated LLMF at 4,000 h	0.92
Rated LLMF at 6,000 h	0.91
Rated LLMF at 8,000 h	0.90
Rated LLMF at 12,000 h	0.90
Rated LLMF at 16,000 h	0.90
Rated LLMF at 20,000 h	0.89
Color temperature	4000 K
Luminous flux	1200 lm
Color rendering index Ra	≥80

### Dimensions & weight



Tube diameter	16 mm
---------------	-------

<b>Length</b>	549.0 mm
<b>Length with base excl. base pins/connection</b>	549.00 mm
<b>Diameter</b>	16.0 mm
<b>Maximum diameter</b>	16.0 mm

#### Temperatures & operating conditions

<b>Rated ambient temp.w.max.luminous flux</b>	35.0 °C
---	---------

#### Lifespan

<b>Lifespan</b>	20000 h
<b>Rated lamp survival factor at 2,000 h</b>	0.99
<b>Rated lamp survival factor at 4,000 h</b>	0.99
<b>Rated lamp survival factor at 6,000 h</b>	0.99
<b>Rated lamp survival factor at 8,000 h</b>	0.99
<b>Rated lamp survival factor at 12,000 h</b>	0.99
<b>Rated lamp survival factor at 16,000 h</b>	0.90
<b>Rated lamp survival factor at 20,000 h</b>	0.50
<b>Operation mode LLMF/LSF</b>	HF
<b>Rated lamp life time</b>	20000 h
<b>Nominal lamp life time</b>	20000 h

#### Additional product data

<b>Base (standard designation)</b>	G5
<b>Mercury content</b>	1.2 mg
<b>Show WEEE picto</b>	Yes

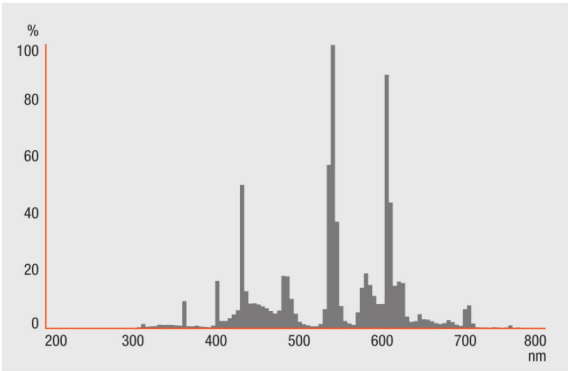
#### Capabilities

<b>Suitable for indoor</b>	Yes
----------------------------	-----

#### Certificates & standards

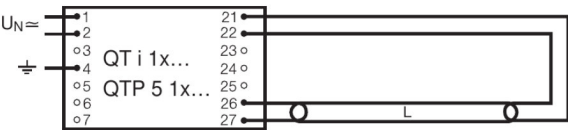
<b>Energy efficiency class</b>	A+
<b>Energy efficiency class</b>	A+
<b>Energy consumption</b>	16 kWh/1000h

Light Distribution

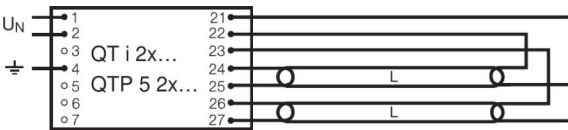


Spectral power distribution

Wiring Diagram



Wiring diagram



Wiring diagram

LOGISTICAL DATA

Product code	Packaging unit (Pieces/Unit)	Dimensions (length x width x height)	Gross weight	Volume
4008321335203	Sleeves 1	563 mm x 18 mm x 18 mm	55.00 g	0.18 dm <sup>3</sup>
4052899046580	Shipping carton box 20	591 mm x 104 mm x 88 mm	1528.00 g	5.41 dm <sup>3</sup>
4008321339393	Sleeves 1	563 mm x 18 mm x 18 mm	55.00 g	0.18 dm <sup>3</sup>
4008321339409	Shipping carton box 50	600 mm x 204 mm x 123 mm	2992.00 g	15.06 dm <sup>3</sup>

The mentioned product code describes the smallest quantity unit which can be ordered. One shipping unit can contain one or more single products. When placing an order, for the quantity please enter single or multiples of a shipping unit.

---

#### DISCLAIMER

Subject to change without notice. Errors and omission excepted. Always make sure to use the most recent release.