



SmartBright LED Downlight DN029B

DN029B-2 LED8/CCT PSR-E D90 CAU

SmartBright Downlight family is the perfect energy efficient LED replacement for conventional downlights. It offers three solutions:;Solution 1;The energy efficient LED replacement for conventional downlights;Essential SmartBright Downlight G3 DN029B-1– trailing and leading edge dimmable downlight is the ideal functional replacement for conventional downlights. This affordable and easy to install fitting delivers high energy savings without compromising on light quality.;Solution 2;Select the right colour temperature to suit your style;This hassle-free Essential SmartBright DN029B-2 downlight provides you with the flexibility to select the perfect colour temperature (Warm White/Cool White/Day Light) for the application. Integrated with trailing/leading edge dimming capability, this affordable and easy to install fitting delivers high energy savings without compromising on light quality.;Solution 3;Enjoy the flexibility of a dimmable fitting without paying more;Essential SmartBright DN029B-3 step dimming downlight is the perfect hassle-free replacement for conventional dimmable downlights. Adjust the light level straight from the switch and save cost with installation as a dimmer unit is not required.

Product data

General Information		Power Factor (Min)	
Light source color	3000/4000/6500	0.8	
Light source replaceable	No	Controls and Dimming	
Driver/power unit/transformer	Power supply unit	Dimmable	Yes
Luminaire light beam spread	105°	Mechanical and Housing	
Protection class IEC	Safety class II	Housing Material	Plastic
Warranty period	3 years	Reflector material	Polycarbonate
Operating and Electrical		Overall length	64.3 mm
Input Frequency	50 or 60 Hz	Overall width	64.3 mm

SmartBright LED Downlight DN029B

Overall height	64.3 mm
Overall diameter	115 mm
Color	RAL (to be defined)
Dimensions (Height x Width x Depth)	64 x 64 x 64 mm (2.5 x 2.5 x 2.5 in)

Approval and Application

Ingress protection code	IP20/44 [Finger-protected; wire-protected, splash-proof]
Mech. impact protection code	IK02 [0.2 J standard]

Initial Performance (IEC Compliant)

Initial luminous flux (system flux)	800 lm
Initial LED luminaire efficacy	80 lm/W
Init. Corr. Color Temperature	4000 K
Init. Color Rendering Index	80
Initial chromaticity	SDCM<5
Initial input power	10 W
Power consumption tolerance	+/-10%

Over Time Performance (IEC Compliant)

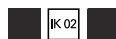
Median useful life L70B50	25000 h
---------------------------	---------

Application Conditions

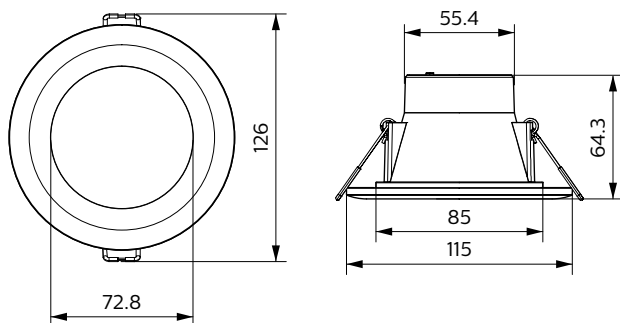
Ambient temperature range	-20 to +40 °C
---------------------------	---------------

Product Data

Full product code	871016331470999
Order product name	DN029B-2 LED8/CCT PSR-E D90 CAU
EAN/UPC - Product	8710163314709
Order code	911401851597
Numerator - Quantity Per Pack	1
Numerator - Packs per outer box	24
Material Nr. (12NC)	911401851597
Net Weight (Piece)	0.230 kg



Dimensional drawing



DN029B-1/2/3 LED8 D90 CAU

