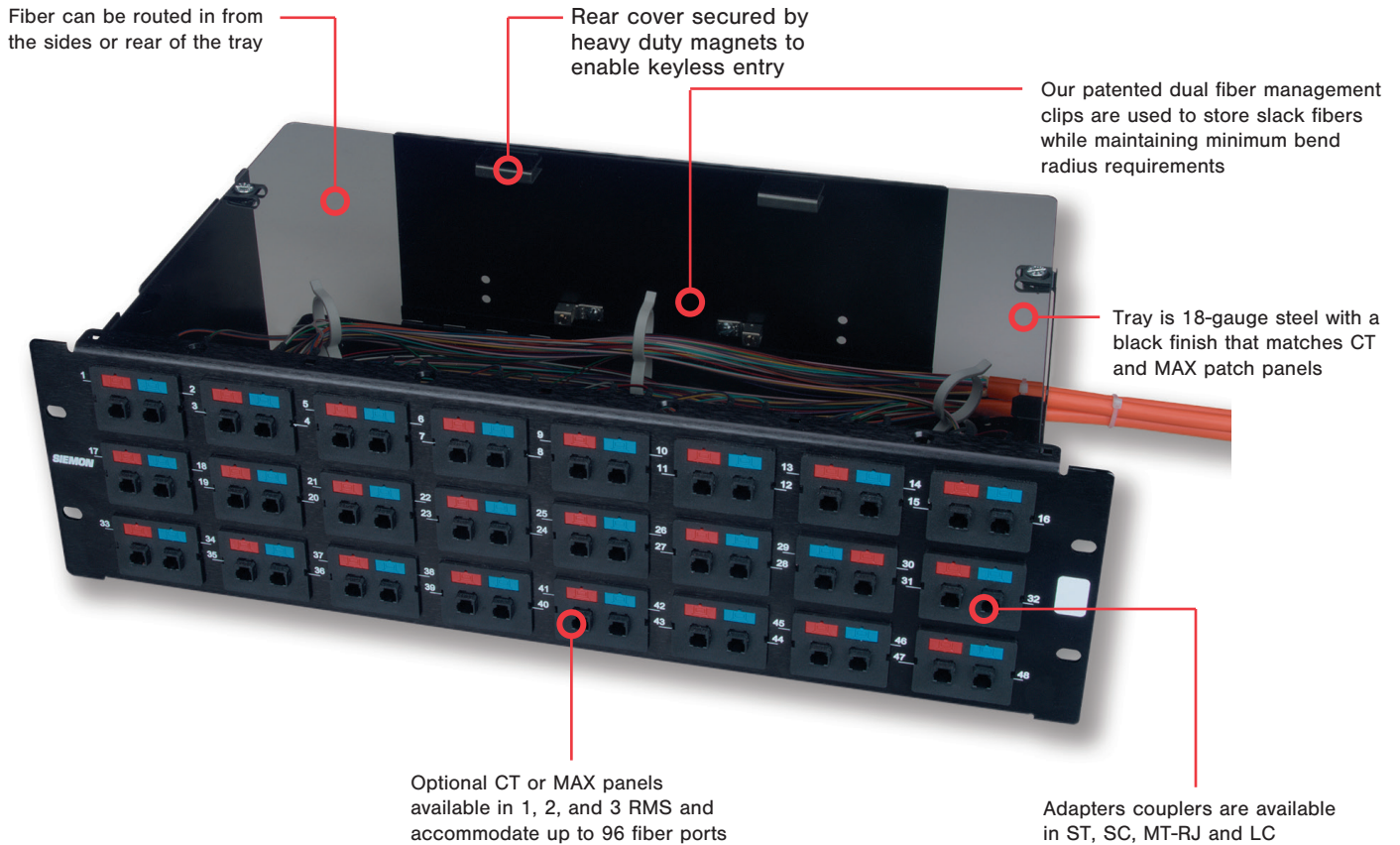
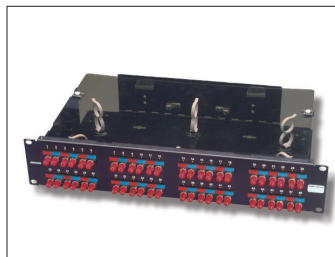


Fiber Management Tray (FMT)

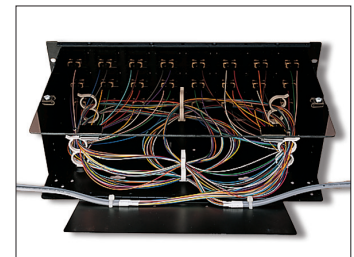
Siemon Fiber Management Trays (FMT) are an economical solution for managing fiber cable slack and splice trays. The management trays have been designed to easily retrofit any standard 1, 2, or 3 RMS CT® or MAX® series patch panel. The tray is only 254mm (10 in.) deep, allowing it to readily fit into most cabinet enclosures. A rear hinged door provides easy access to fiber management area.



Choose from a variety of flat CT couplers or MAX fiber adapters modules (for use with MAX patch panels)



The Fiber Management Tray can be used with Siemon's MAX Patch Panels for higher density fiber and multimedia applications



2 and 3 RMS trays include a rear hinged door to provide convenient access to fiber

Ordering Information

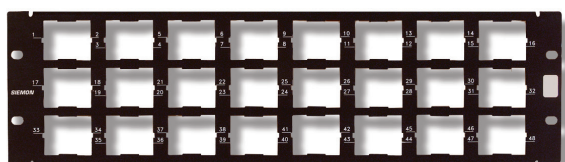
Fiber Management Trays

Part Number Description

CT-FMT-16.....	Fiber tray for 1 RMS CT or MAX panel height: 43.2mm (1.7 in.); width: 432mm (17 in.); depth: 254mm (10 in.)
CT-FMT-24.....	Fiber tray for 2 RMS CT or MAX panel height: 86.4mm (3.4 in.); width: 432mm (17 in.); depth: 254mm (10 in.)
CT-FMT-48.....	Fiber tray for 3 RMS CT panel height: 129.5mm (5.1 in.); width: 432mm (17 in.); depth: 254mm (10 in.)

Note: 1 RMS = 44.5mm (1.75 in.)

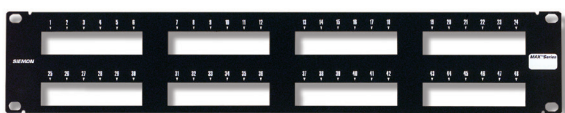
CT® Patch Panels



Part Number Description

CT-PNL-16	16-port panel, accepts 8 couplers, 1 RMS
CT-PNL-24	24-port panel, accepts 12 couplers, 2 RMS
CT-PNL-32	32-port panel, accepts 16 couplers, 2 RMS
CT-PNL-48	48-port panel, accepts 24 couplers, 3 RMS

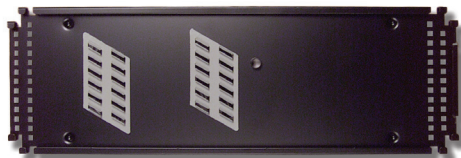
MAX® Patch Panels



Part Number Description

MX-PNL-16	16-port panel, RMS 1
MX-PNL-24	24-port panel, RMS 1
MX-PNL-48	48-port panel, RMS 2

Splice Trays



Part Number Description

TRAY-3	Standard splice tray for up to 24 fusion splices using sleeve protection
TRAY-M-3.....	Mini splice tray for up to 12 fusion splices using sleeve protection

CT®, MAX®, LightSystem®, XGLO™ and ULTRASplice® are trademarks of Siemon

Fiber Adapter CT Couplers



Part Number Description

CT-SC-SC-01	Flat black coupler with 1 duplex SC adapter (2 fibers)
CT-SA-SA-01	Flat black coupler with 1 duplex ST adapter (2 fibers)
CT-LC(X)-01	Flat black coupler with 1 duplex LC adapter (2 fibers)
CT-LC(X)-LC(X)-01...	Flat black coupler with 2 duplex LC adapters (4 fibers)
CT-MT-MT-01	Flat black coupler with 2 duplex MT-RJ adapters (4 fibers)

Use (X) to specify LC adapter color: Blank = beige, U = blue

Note: Couplers include one color-matching icon (clear for black); plus one red and one blue icon.

MAX Fiber Adapter Modules



Part Number Description

MX-F-S2-01	Flat black module with 1 duplex ST adapter (2 fibers)
MX-F-SC-01	Flat black module with 1 duplex SC adapter (2 fibers)
MX-F1-LC(X)-01	Flat black module with 1 duplex LC adapter (2 fibers)
MX-F-MT-01	Flat black module with 1 duplex MT-RJ adapter (2 fibers)

Use (X) to specify LC adapter color: Blank = beige, U = blue

Note: Modules include dust-caps, one color-matching, one red and one blue icon per port.

For related product information request Spec Sheet(s):

CT Patch Panel (PROD-SS-CTP)
MAX Patch Panel (PROD-SS-MXP)
LightSystem® Jumpers & Pigtails (PROD-SS-FJ1)
XGLO™ Jumper & Pigtails (PRD-SS-LOF)
ST & SC Connectors (PROD-SS-SFC)
LC Connector Products (PROD-SS-LCC)
MT-RJ Connectors (PROD-SS-MTR)
LightSpeed™ Fiber Termination Kit (PROD-SS-FTK)

Because we continuously improve our products, Siemon reserves the right to change specifications and availability without prior notice.

North America

P: (1) 860 945 4200

Asia Pacific

P: (61) 2 8977 7500

Latin America

P: (571) 657 1950/51/52

Europe

P: (44) 0 1932 571771

China

P: (86) 215385 0303

India Middle East

P: (971) 4 3689743

Siemon Interconnect Solutions

P: (1) 860 945 4213

www.siemon.com/SIS

WWW.SIEMON.COM

