



General Electrical >

 **CABAC**
One Call → One Day → One Delivery

Contents

Nylon Metric Thread	5
Nylon European Thread	6
Brass Unarmoured Metric Thread	7
Brass Unarmoured Pipe Glands	7
Brass Metric Thead (EMC)	9
Nickel Plated Unarmoured Metric Thread	10
Nickel Plated Armoured Metric Thread	11
Hazardous Nylon Glands	12
Hazardous Metal Glands	12
Locknuts	13
Brass Earth Tags	14
PVC Gland Shrouds	14
Nylon Cable Ties	16
Nylon Releasable Ties	19
Nylon Mounting Head Ties	19
Nylon Push Mount Ties	20
Nylon Identification Ties	20
Coloured Cable Ties	21
Cable Tie Packs	21
Nylon Metal Tooth Cable Ties	22
Nylon Detectable Cable Ties	23
Stick on Mounts	23
Screw Mounts	24
Cable Tie Anchors	25

Pro Cable Ties	25
Stainless Steel Ties	27
Braided Sleeving	30
Cabstrapping	31
Spiral Binding	32
Loom Tube	33
Easy Wrap Binding	33
Fibreglass Sleeving	34
Bushes and Plugs	34
Strain Relief Bushings	35
Grommets	36
Fixings	37
Mechanical Anchors	38
Conduit Flashing	47
Clips	48
Wall Plugs	49
Fasteners	50
Wire Nuts	56
Plug and Cord	57
Cleaners	60
Lubricants	60
Adhesives	62
Sealants	62
Pesticides	63
INDEX	64

GLANDS

Premium Nylon Cable Glands IP68

CABAC's range of Nylon Glands are a unique product.

A camera shutter principle in the cable sealing mechanism makes the gland IP68 rated and 50m submersible. There is no necessity to disassemble the gland prior to installation - just insert the cable through and tighten up. The cable diameter range that each gland can take is large, thus reducing stock inventories.

- IP68 rating - the highest possible
- 5 bar pressure, i.e. submersible to 50m
- Superior strain relief
- Trapezoidal thread for quick high torque tightening
- Large cable range with each gland
- No throw away O-rings – one seal for whole range
- Black material for extended exterior use. Incorporates a unique 'camera shutter' principle which gives IP68 sealing with large cable range
- Long metric thread to suit Australian requirements

The gland to cable interface has an IP68 50m submersible rating, however to maintain this rating, the gland to equipment interface needs appropriate attention. The glands are supplied with optional neoprene seals that can be used to seal the gland body to the equipment. Care should be taken with these seals to ensure the gland is not over tightened, causing the seal to "pop". The glands have a sealing ridge moulded into the gland base, which works effectively with equipment with built-in threads, and a flat surface where the gland beds. In these cases the neoprene seal is not required.

It is recommended that an appropriate sealing compound is used on the body thread in areas that the IP rating is critical. CABAC's cable glands are suitable for use in machine installation, construction, measuring and regulating equipment, site installation and many other applications.

Check with CABAC Technical Staff if installed on light metal enclosures which must be immersed.

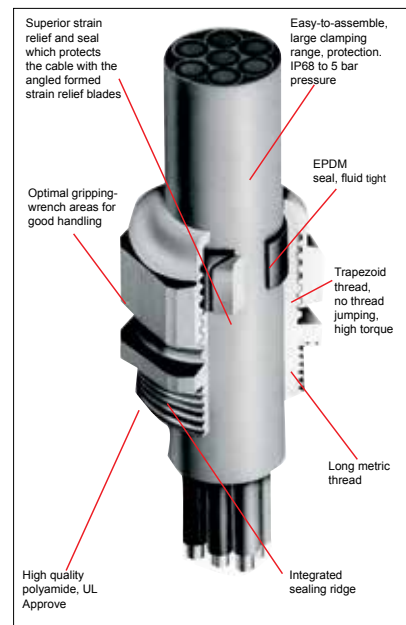


Our glands are IP68

6 = Dust tight

8 = Protected against submersion

This is the highest IP rating possible!



What is an IP rating?

Below is an extract from AS 1939 which gives the degrees of protection relating to IP rating.

An IP rating is made up of two numbers, the first relating to solid objects and dust ingress and the second to water ingress.

First Numeral of an IP Rating (AS 1939) Solid Objects/Dust Protection

- | | |
|---|--|
| 0 | Non-protected |
| 1 | Protected against solid objects greater than 50mm |
| 2 | Protected against solid objects greater than 12mm |
| 3 | Protected against solid objects greater than 2.5mm |
| 4 | Protected against solid objects greater than 1.0mm |
| 5 | Dust protected |
| 6 | Dust tight |

Second Numeral of an IP Rating (AS 1939) Water Protection

- | | |
|----|---|
| 0 | Non-protected |
| 1 | Protected against dripping water |
| 2 | Protected against dripping water when tilted up to 15 degrees |
| 3 | Protected against spraying water |
| 4 | Protected against splashing water |
| 5 | Protected against water jets |
| 6 | Protected against heavy seas |
| 6D | Protected against driving rain |
| 7 | Protected against the effect of immersion |
| 8 | Protected against submersion |

NYLON METRIC THREAD

NYLON METRIC PREMIUM



- Metric threaded glands made from Polyamide 6.6 with camera shutter cable sealing rated IP68.
- Medium resistance to vegetable oils and Benzol
- Conforms to Standards DIN VDE 0619, IP68 i.e. 5 bar
- Supplied complete with locknut and body seal



Part No.	Cable Thread Size	OD Cable Range (mm)	Thread Width (mm)	A/F (mm)	Unit	Qty
GN12	M12	3-6	8	15	BOX	40
GN16	M16	5-10	15	21.8	BOX	40
GN20	M20	8-13	15	26.3	BOX	25
GN25	M25	9-18	15	32	BOX	15
GN32	M32	15-24	15	41.5	BOX	5
GN40	M40	19-28	18	49.2	BOX	5
GN50	M50	27-38	18	59.2	BOX	2
GN63	M63	36-47	18	71.2	BOX	2

NYLON WASHER PREMIUM



- EPDM washer for Polyamide premium GN glands
- Seals gland and mounting plate with locknut
- Made from EPDM (ethylene propylene diene monomer)

Part No.	Description	Unit	Qty
GN16-NW	GN16 WASHER	BAG	10
GN20-NW	GN20 WASHER	PAK	10
GN25-NW	GN25 WASHER	BAG	10
GN32-NW	GN32 WASHER	BAG	10
GN40-NW	GN40 WASHER	BAG	10
GN50-NW	GN50 WASHER	BAG	10
GN63-NW	GN63 WASHER	BAG	10

NYLON METRIC STANDARD



- Metric threaded PA6.6 gland with camera shutter type seal complete with lock nut and seal rated IP68.
- UV stabilised and submersible up to 50m, 5 bar pressure
- Large cable range per gland reducing inventory.
- Gland range covers cable diameters from 3mm to 44mm



Part No.	Cable Thread Size	OD Cable Range (mm)	Thread Width (mm)	A/F (mm)	Unit	Qty
GN12S	M12	3-6.5	8	15	BOX	40
GN16S	M16	5-Oct	15	21.8	BOX	40
GN20S	M20	Oct-14	15	26.3	BOX	25
GN25S	M25	13-18	15	32	BOX	15
GN32S	M32	18-25	15	41.5	BOX	5
GN40S	M40	22-32	18	49.2	BOX	5
GN50S	M50	30-38	18	59.2	BOX	2
GN63S	M63	34-44	18	71.2	BOX	2

GLANDS

Gland Selection Chart - For PVC Sheathed and Insulated Cables

Cable Area (mm ²)	PVC Ins. Single	S.D.I. Single Core	Two Core	Three Core	Four Core
1	GN12/GN12S	GN16/GN16S			
1.5	GN12/ GN12S	GN16/GN16S	GN20/GN20S	GN20/GN20S	GN20/GN20S/ GN25/GN25S
2.5	GN12/ GN12S	GN16/GN16S	GN20/GN20S/GN25/ GN25S	GN20/GN20S/GN25/GN25S	GN25/GN25S
4	GN12/ GN12S /GN16/ GN16S	GN16/GN16S	GN25/GN25S	GN25/GN25S	GN25/ GN25S/ GN32/GN32S
6	GN12/ GN12S/GN16/GN16S	GN16/GN16S/GN20/GN20S	GN25/GN25S	GN25/GN25S/GN32/GN32S	GN32/G/GN32S
10	GN16/ GN16S	GN16/GN16S/GN20/GN20S	GN25/ GN25S/GN32/ GN32S	GN32/GN32S	GN32/GN32S/ GN40/GN40S
16	GN16/ GN16S	GN20/GN20S	GN32/GN32S	GN32/GN32S/GN40/GN40S	GN40/GN40S
25	GN16/ GN16S/GN20/GN20S	GN20/GN20S/GN25/GN25S	GN40/GN40S	GN40/GN40S	GN40/GN40S/ GN50/GN50S
35	GN20/GN20S	GN25/GN25S		GN40/GN40S/GN50/GN50S	GN50/GN50S
50	GN20/GN20S/GN25/GN25S	GN25/ GN25S/GN32/GN32S		GN50/GN50S/GN63/GN63S	GN50/GN50S/ GN63/GN63S
70	GN20/GN20S/GN25/GN25S	GN32/GN32S		GN63/GN63S	GN63/GN63S
95	GN25/GN25S/GN32/GN32S	GN32/GN32S/GN40/GN40S			
120	GN32/GN32S	GN40/GN40S			
150	GN32/GN32S/GN40/GN40S	GN40/GN40S			
185	GN40/GN40S	GN40/GN40S			
240	GN40/GN40S	GN50/GN50S			
300	GN40/GN40S/GN50/GN50S	GN50/GN50S/GN63/GN63S			
400	GN50/GN50S	GN63/GN63S			

NYLON EUROPEAN THREAD

NYLON EUROPEAN THREAD



- Polyamide glands from PA 6 V-Z with PG thread and shutter camera type IP68 sealing insert.
- (PG) pipe gland thread used in European produced motors etc.
- High resistance - petrol, diesel, mineral oils and weak acids
- Locknut sold separately, nitril rubber O-ring



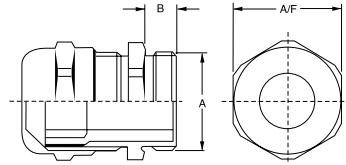
Part No.	Cable Thread Size	OD Cable Range (mm)	Thread Width (mm)	A/F (mm)	Unit	Qty
GN9PG	9PG	4-8	8	19	EA	1
GN11PG	11PG	5-10	8	22	EA	1
GN13.5PG	13.5PG	6-12	9	24	EA	1
GN16PG	16PG	10-14	10	27	EA	1
GN21PG	21PG	13-18	11	33	EA	1

BRASS UNARMoured METRIC THREAD

BRASS GU METRIC



- Metal glands with camera shutter seal rated IP68 and seals to 5 bar. Fully insulated inserted seal for fluid sealing
- Nickel plated brass gland with insert (CR/NBR, rubber) seal
- Large cable range with each gland. Easy to install.
- The perfect gland for unarmoured PVC, XLPE and synthetic cables
- Locknut sold separately, NBR O-ring included.



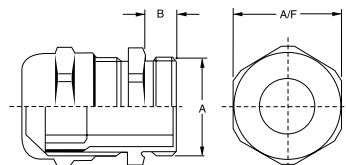
Part No.	(A) Mounting Dia. (mm)	(B) Thread Length (mm)	Min. Cable Range (mm)	Max. Cable Range (mm)	Width A/F (mm)	Unit	Qty
GU12	12	10	3	6	14	EA	1
GU16	16	10	5	9	17	EA	1
GU20	20	10	9	13	22	EA	1
GU25	25	11	11	16	27	EA	1
GU32	32	13	14	21	34	EA	1
GU40	40	13	19	27	43	EA	1
GU50	50	13	24	35	55	EA	1
GU63	63	14	32	42	65	EA	1

BRASS UNARMoured PIPE GLANDS

BRASS GU PIPE GLAND



- Metal, PG threaded glands with camera shutter cable clamping seals rated IP68 (5 bar)
- (PG) pipe gland thread used in European produced motors etc.
- Nickel plated brass with CR/NBR sealing insert
- Large cable range per gland with superior strain relief
- Locknut sold separately, but includes Nitrile rubber o-ring



Part No.	(A) Mounting Dia. (mm)	(B) Thread Length (mm)	Min. Cable Range (mm)	Max. Cable Range (mm)	Width A/F (mm)	Unit	Qty
GU9PG	9	6	4	8	17	EA	1
GU11PG	11	6	5	10	22	EA	1
GU13.5PG	13.5	6.5	6	12	22	EA	1
GU16PG	16	6.5	10	14	24	EA	1
GU21PG	21	7	13	18	30	EA	1

Metal Glands - Unarmoured IP68 - Gland Selection Chart

Note: This chart should be used as a guide only. Cable dimensions vary by manufacturer and insulation type.

Cable Area (mm ²)	PVC Ins. Single	S.D.I. Single	Two Core & Earth	Three Core & Earth	Four Core & Earth
1		GU16			
1.5	GU12	GU16	GU16/GU20	GU20	GU20
2.5	GU12	GU16	GU20	GU25	GU25
4	GU12	GU16/GU20	GU20/GU25	GU25/GU32	GU25/GU32
6	GU12/GU16	GU16/GU20	GU25	GU32	GU32
10	GU16	GU16/GU20	GU25/GU32	GU32	GU32/GU40
16	GU16	GU20	GU32	GU32/GU40	GU40
25	GU16/GU20	GU20/GU25	GU40	GU40	GU40/GU50
35	GU20	GU25		GU40/GU50	GU50
50	GU20/GU25	GU25/GU32		GU50	GU50/GU63
70	GU25	GU32		GU63	GU63
95	GU25/GU32	GU32/GU40		GU63	
120	GU32	GU40			
150	GU32/GU40	GU40			
185	GU40	GU40/GU50			
240	GU40	GU50			
300	GU40/GU50	GU50/GU63			
400	GU50	GU63			
500	GU50/GU63	GU63			
630	GU63				

Technical Data

Material

Brass nickel plated Polyamide 6 Insert
(self extinguishing)
Neoprene seal (self extinguishing)
Neoprene O-ring (self extinguishing)

Continuous Operating Temperature

-20°C to +100°C

Chemical Resistance

Resistant to normal organic solvents, mineral, animal and vegetable oils, fat and petrol.

Conformant Standard

DIN 46 319 - brass glands metric

Threading

According to IEC 423, IEC 423A and EN 60423

IP Rating

IP68

Strain Relief and Twisting Protection

To DIN VDE 0619

Recommended Torque

Product Torque (Nm)

GU12	6
GU16	6
GU20	6
GU25	7
GU32	10
GU40	10
GU50	10
GU63	10

Metal Glands - EMC IP68

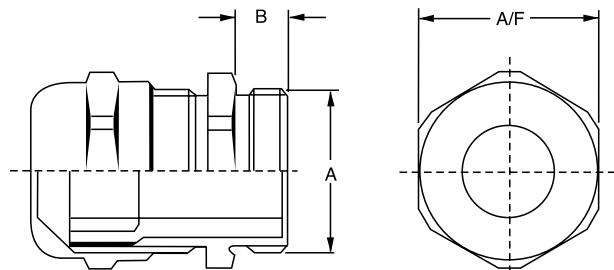
Electro Magnetic Compatibility (EMC) refers to the ability of an electrical or electronic device or system to function satisfactorily in its electro magnetic environment, without introducing intolerable electro magnetic interference (EMI) to anything in that environment. EMC encompasses controls of both unintentional emissions from a range of products that can interfere with radio communications, as well as protection of a range of devices that may be susceptible to intentional transmissions.

It is necessary to effectively terminate EMC cable (shielded) with a suitable EMC gland.

CABAC's EMC gland is similar to the popular GU range of glands, and is available in sizes from 12mm through to 63mm metric threads.

- IP68 rating - the highest possible
- Superior strain relief
- Easy to terminate cable shielding
- Larger cable range with each gland
- Nickel-plated brass for corrosion protection
- Unique "camera shutter" principal which gives IP68 sealing

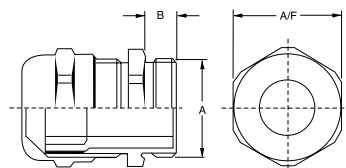
Installation - to ensure compatibility the gland must be terminated into a metal enclosure or terminal box. The shielding of the cable should be stripped back to the point where the gland enters the enclosure. The gland is passed over the cable and the shielding terminated into the bottom of the gland. The gland is then screwed together and connected to the enclosure.



BRASS METRIC THEAD (EMC)

BRASS EMC

- Metal EMC gland with camera shutter type cable seal rated IP68 (5 bar) & with cable shield connection
- Large cable range per gland sealing with CR/NBR (rubber) seal
- Nickel plated brass body with Polyamide 6 V-2 insert
- Locknut sold separately, but with NBR o-ring
- For cables with mesh or foil shielding. Easy to use.



Part No.	(A) Mounting Dia. (mm)	(B) Thread Length (mm)	Min. Cable Range (mm)	Max. Cable Range (mm)	Width A/F (mm)	Unit	Qty
GU12EMC/L	12	10	3	6	14	EA	1
GU16EMC/L	16	10	5	9	17	EA	1
GU20EMC/L	20	10	8	13	22	EA	1
GU25EMC/L	25	11	11	17	27	EA	1
GU32EMC/L	32	13	15	21	34	EA	1
GU40EMC/L	40	13	19	28	43	EA	1
GU50EMC/L	50	14	26	35	55	EA	1
GU63EMC/L	63	14	32	42	65	EA	1

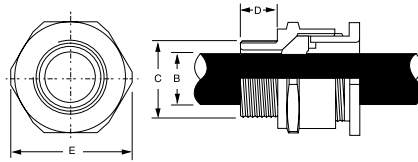
GLANDS

NICKEL PLATED UNARMoured METRIC THREAD

METAL UNARMoured



- General purpose gland for unarmoured PVC and XLPE sheathed cables - IP66 rated
- Large cable range per gland and sealing with rubber ring
- Nickel plated brass body for superior corrosion protection
- Conforms to BS6121:Part 1:2005
- Locknuts Sold Separately



Part No.	(C) Mounting Thread Dia. (mm)	(D) Thread Length (mm)	(B) Min. Cable Range (mm)	(B) Max. Cable Range (mm)	(E) Across Corners (mm)	Shroud	Locknuts Included	Unit	Qty
A2-20/16	20	10	3.1	8.6	24.5	1	No	EA	1
A2-20S	20	10	6.1	11.6	26.5	1	No	EA	1
A2-20	20	10	6.5	13.9	30	2	No	EA	1
A2-25	25	10	11.1	19.9	39.9	3	No	EA	1
A2-32	32	10	17	26.2	46	3	No	EA	1
A2-40	40	15	22	32.1	55.3	4	No	EA	1
A2-50S	50	15	29.5	38.1	61.3	5	No	EA	1
A2-50	50	15	35.6	44	66.8	5	No	EA	1
A2-63S	63	15	40.1	49.9	77.5	6	No	EA	1
A2-63	63	15	47.2	55.9	83.2	7	No	EA	1
A2-75S	75	15	54	62	89	0	Yes	EA	1
A2-75	75	15	60.5	67	94	0	Yes	EA	1
A2-90	90	20	68	78	112.8	0	Yes	EA	1
A2-100	100	25	78	88	131	0	Yes	EA	1
A2-110	110	25	87	98	144.2	0	Yes	EA	1

Metal Glands - Unarmoured IP66 - Gland Selection Chart for 0.6/1kV Unarmoured PVC Cables with Circular Copper Conductors

Cable	Single Core SDI	2 Core & Earth	3 Core & Earth	3½ Core & Earth	4 Core & Earth
1.5	A2-20S	A2-20S	A2-20		A2-20
2.5	A2-20S	A2-20	A2-20		A2-25
4	A2-20S	A2-20	A2-25		A2-25
6	A2-20S	A2-25	A2-25		A2-25
10	A2-20S	A2-25	A2-25		A2-32
16	A2-20S	A2-25	A2-32		A2-32
25	A2-20	A2-32	A2-32		A2-40
35	A2-20		A2-40		A2-40
50	A2-25		A2-40	A2-50S	A2-50S
70	A2-25		A2-50S	A2-50	A2-50
95	A2-25		A2-50	A2-50	A2-63S
120	A2-32		A2-63S	A2-63S	A2-63
150	A2-32		A2-63	A2-63	
185	A2-40		A2-63		
240	A2-40				
300	A2-50S				
400	A2-50S				
500	A2-50				
630	A2-63S				

Technical Data

Material

Body Brass
Seal Neoprene rubber
Finish Nickel plated

Conformant Standard

BS6121

IP Rating

IP66

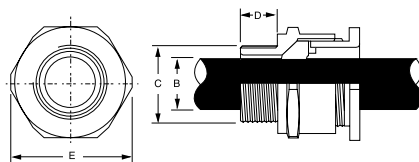
Note: This chart should be used as a guide only. Cable dimensions vary by manufacturer and insulation type.

NICKEL PLATED ARMoured METRIC

METAL ARMoured



- Nickel plated brass cable glands for steel wire armoured cables with unique wedge seal for quick and easy installation.
- Weatherproof IP66 rated with seal to cable outer jacket
- Large cable range per gland, thus reducing inventory
- Conforms to BS6121:Part 1:1989
- Locknut sold separately



Part No.	(C) Mounting Thread Dia. (mm)	(D) Thread Length (mm)	(A) Max. Under Armour Cable Range (mm)	(B) Min. Cable Range (mm)	(B) Max. Cable Range (mm)	Armour Wire Dia. (mm)	Across Corners (mm)	Shroud	Unit	Qty
CW20/16	20	15	8.6	8	13.4	0.9	24.5	1	EA	1
CW20S	20	15	11.6	11.4	15.9	0.9 - 1.25	26.5	1	EA	1
CW20	20	15	13.9	15	20.9	0.9 - 1.25	30	2	EA	1
CW25	25	15	19.9	20.3	27.4	1.25 - 1.6	39.9	3	EA	1
CW32	32	15	26.2	26	33.9	1.6 - 2.0	46	4	EA	1
CW40	40	15	32.1	31	40.4	1.6 - 2.0	55.3	5	EA	1
CW50S	50	15	38.1	36.5	46.7	2.0 - 2.5	61.3	6	EA	1
CW50	50	15	44	43	53.1	2.0 - 2.5	66.8	7	EA	1
CW63S	63	15	50	48.9	59.4	2.5	77.5	7	EA	1
CW63	63	15	55.9	58	65.9	2.5	83.2	7	EA	1

Metal Glands - Armoured Cables IP66 - Gland Selection Chart for 0.6/1kV Armoured PVC Cables with Circular Copper Conductors

Cable	2 Core & Earth	3 Core & Earth	3½ Core & Earth	4 Core & Earth
1.5	CW20S	CW20		CW20
2.5	CW20	CW20		CW20
4	CW20	CW20		CW20
6	CW20	CW25		CW25
10	CW25	CW25		CW25
16	CW25	CW25		CW32
25	CW32	CW32		CW32
35		CW32		CW40
50		CW40	CW50S	CW50S
70		CW50S	CW50S	CW50
95		CW50S	CW50	CW63S
120		CW50	CW63S	CW63S
150		CW63S	CW63S	CW63
185		CW63S	CW63	

Technical Data

Material

Body Brass
Seal Neoprene rubber
Finish Nickel plated

Conformant Standard

BS6121

IP Rating

IP66

Note: This chart should be used as a guide only. Cable dimensions vary by manufacturer and insulation type.

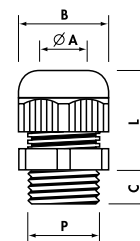
GLANDS

HAZARDOUS NYLON GLANDS

HAZARDOUS PA6.6 GLANDS



- Designed for fixed installations of cables in explosive atmosphere with the presence of gas or combustible dust
- Ex e IIC/Ex tbIIIC safety levels
- Material: Polyamide PA6.6
- Rating: IP65 protection
- -20 to +75 degree celsius temperature range



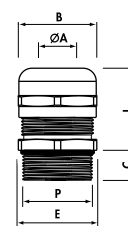
Part No.	P	Fixed Hole Dia.	B Spanner	A Dia Min - Max	C (mm)	L Min - Max	Unit	Qty
C4901M12EX	M12x1.5	12.2	15	3.5-6.5	15	18-22	EA	1
C4901M16EX	M16x1.5	16.2	19	6.5-10	15	22-27	EA	1
C4901M20EX	M20x1.5	20.5	25	10-13	15	24-30	EA	1
C4901M25EX	M25x1.5	25.4	30	11-17	15	30-41	EA	1
C4901M32EX	M32x1.5	32.5	36	16-21	15	33-44	EA	1
C4901M40EX	M40x1.5	40.5	46	21-28	18	36-45	EA	1
C4901M50EX	M50x1.5	50.5	55	27-35	18	43-52	EA	1
C4901M63EX	M63x1.5	64	66	35-42	18	45-55	EA	1

HAZARDOUS METAL GLANDS

HAZARDOUS METAL GLANDS



- Designed for fixed installations of cables in explosive atmosphere with the presence of gas or combustible dust
- Ex e IIC / Ex tbIIIC safety levels
- Material: Nickle Plated Brass
- Rating: IP65 protection
- -25 to +75 degree celsius temperature range



Part No.	P	Fixed Hole Dia.	B Spanner	A Dia Min - Max	C (mm)	L Min - Max	Unit	Qty
C5900M12NEX	M12x1.5	12.2	16	3.5-6.5	6.5	16-20	EA	1
C5900M16NEX	M16x1.5	16.2	20	6.5-10	7	20-25	EA	1
C5900M20NEX	M20x1.5	20.5	24	Oct-13	8	20-27	EA	1
C5900M25NEX	M25x1.5	25.4	29	11-17	8	24-30	EA	1
C5900M32NEX	M32x1.5	32.5	36	14-21	9	27-34	EA	1
C5900M40NEX	M40x1.5	40.5	45	21-27	9	34-42	EA	1
C5900M50NEX	M50x1.5	50.5	54	26-35	10	35-43	EA	1
C5900M63NEX	M63x1.5	64	67	35-42	15	40-52	EA	1

LOCKNUTS

POLYAMIDE LOCKNUT FOR GN PIPE GLANDS



- When used in conjunction with European (PG) Nylon Cable Glands the complete assembly meets with IP68 rating
- Commonly used in European produced motors etc.
- PG nylon glands are not supplied with a locknut

Part No.	Description	Unit	Qty
LNN9PG	NYLON LOCKNUT TO SUIT GN9PG	EA	1
LNN11PG	NYLON LOCKNUT TO SUIT GN11PG	EA	1
LNN13.5PG	NYLON LOCKNUT TO SUIT GN13.5PG	EA	1
LNN16PG	NYLON LOCKNUT TO SUIT GN16PG	EA	1
LNN21PG	NYLON LOCKNUT TO SUIT GN21PG	EA	1

BRASS LOCKNUT FOR GU METRIC



- When used in conjunction with metric metal unarmoured cable glands the complete assembly meets with IP68 or IP66 rating depending on the gland
- Nickel plated brass for corrosion protection
- As a standard metal glands are not supplied with a locknut

Part No.	Description	Unit	Qty
LNM12	LOCKNUT FOR GU12	EA	1
LNM16	LOCKNUT FOR GU16	EA	1
LNM20	LOCKNUT FOR GU20	EA	1
LNM25	LOCKNUT FOR GU25	EA	1
LNM32	LOCKNUT FOR GU32	EA	1
LNM40	LOCKNUT FOR GU40	EA	1
LNM50	LOCKNUT FOR GU50	EA	1
LNM63	LOCKNUT FOR GU63	EA	1

BRASS LOCKNUT GU PIPE GLAND



- Used with Nickel Plated Brass European thread (PG) Gland range. Commonly used in European produced motors etc.
- Nickel plated brass for corrosion protection

Part No.	Description	Unit	Qty
LNM9PG	METAL LOCKNUT TO SUIT GU9PG	EA	1
LNM11PG	METAL LOCKNUT TO SUIT GU11PG	EA	1
LNM13.5PG	METAL LOCKNUT TO SUIT GU13.5PG	EA	1
LNM16PG	METAL LOCKNUT TO SUIT GU16PG	EA	1
LNM21PG	METAL LOCKNUT TO SUIT GU21PG	EA	1

GLANDS

LOCKNUT BRASS EMC METRIC



- Has sharp barbs to cut an earthing path into the metal enclosure, through paint or most surface coverings
- When used with Brass EMC Metric Gland assembly meets IP68 rating
- Nickel plated brass for corrosion protection

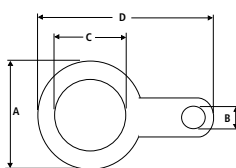
Part No.	Description	Unit	Qty
LNM12EMC	LOCKNUT FOR GU12EMC/L	EA	1
LNM16EMC	LOCKNUT FOR GU16EMC/L	EA	1
LNM20EMC	LOCKNUT FOR GU20EMC/L	EA	1
LNM25EMC	LOCKNUT FOR GU25EMC/L	EA	1
LNM32EMC	LOCKNUT FOR GU32EMC/L	EA	1
LNM40EMC	LOCKNUT FOR GU40EMC/L	EA	1
LNM50EMC	LOCKNUT FOR GU50EMC/L	EA	1
LNM63EMC	LOCKNUT FOR GU63EMC/L	EA	1

BRASS EARTH TAGS

EARTH TAGS BRASS



- Earth tags are used to earth metal glands
- Made of brass to improve contact
- Tag hole used to attach the earth conductor
- Used with metal gland range



Part No.	A (mm)	B (mm)	C (mm)	D (mm)	Thickness (mm)	Unit	Qty
ET16	27	7	16	50	1.2	EA	1
ET20	29	7	20	50	1.2	EA	1
ET25	36	7	26	61	1.2	EA	1
ET32	44	7	32	70	1.2	EA	1
ET40	52	7	40	84	1.2	EA	1
ET50	64	7	51	94	1.4	EA	1
ET63	78	7	64	109	1.4	PAK	2

PVC GLAND SHROUDS

SHROUDS PVC



- Made from a unique stretchy PVC material so they have a large range taking capability
- Orange in colour for easy identification
- Halogen free, low smoke, and flame retardant



Part No.	A Min. Length Diameter (mm)	B Min. Gland Diameter (mm)	C Cable (mm)	Unit	Qty
SH1	70	23	7	EA	1
SH2	65	29	14	EA	1
SH3	75	39	16	EA	1
SH4	85	48	25	EA	1
SH5	95	56	30	EA	1
SH6	110	70	31	EA	1
SH7	125	75	33	EA	1

CABLE TIES AND MOUNTS

Cable Ties - PA Polyamide 66 Halogen Free

Our ties meet most basic cable tie needs, with choices covering a wide range of requirements for size and strength. One-piece, injection-moulded construction provides maximum strength and adjustability for securing all sizes of bundles. Extra features such as rounded edges and bent-tip design make installation easy, fast, accurate and secure. Installation tools are not required but are suggested where controlled, uniform tension and cut-off applications are desired.

Split mandrel, loop tensile strength tests show that the most vulnerable stress point for a nylon cable tie is its pawl. There is a trade-off between insertion/pull-up ease and strength of a cable tie. The stronger the pawl, the more force is required to insert and pull up the strap as it engages the pawl teeth. Cable ties are designed to optimise insertion ease and still meet or exceed all applicable strength requirements. This magnified cross-section illustrates our full four-tooth locking engagement between strap and pawl under load. This intimate contact between pawl and strap teeth, ensures that the strength of the pawl is fully utilised.

Installations under conditions of full tropical sun and/or very low relative humidity, must be referred to CABAC design engineers for evaluation and recommendations.

Exterior applications should use black (U.V. stabilised) ties.



Technical Data
Conformant Standards
UL; Mil Spec; IEC; VDE; DIN

Refer
Mil-S-23190E - testing

Smoke Emission
Low smoke / Halogen free

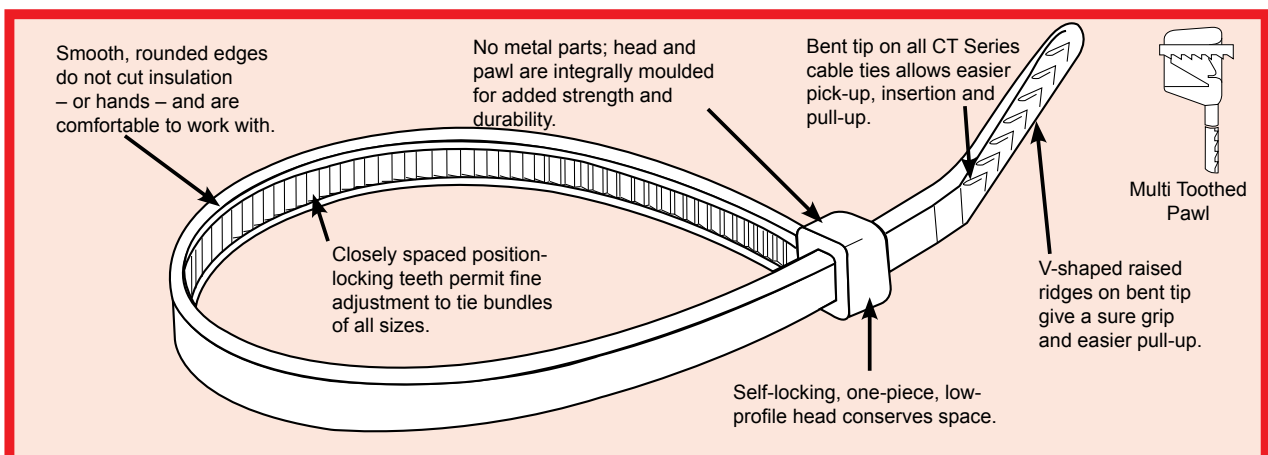
Material
NATURAL - PA 66 with additives
BLACK - PA 66 with UV stabilisers

Electrical data
Breakdown voltage 20 kV/mm
Moisture content 2.5% w.v. @
23%/50%RH

Operating Temperature
-40°C to 85°C

Flammability
Passed - U.L. 94V-2

UV Stability (Black Ties only)
Nylon Polyamide 66 material with 2.5%
Carbon Black for UV Protection.

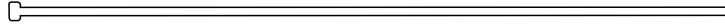


NYLON CABLE TIES

CABAC NYLON LIGHT DUTY NATURAL



- For light-duty the head/pawl are integrally moulded for added strength and durability. Tip designed for easy pick up, insertion and pull through
- Smooth round edges do not cut insulation
- Self-locking low profile head conserves space
- For outdoors - use UV stabilised black ties

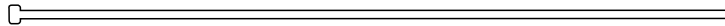


Part No.	Loop Tensile Strength (kg)	Bundle Diameter (mm)	Length (mm)	Width (mm)	Thickness (mm)	Colour	Unit	Qty
CT196NT-LD	8	53	200	2.5	1.1	NATURAL	PAK	100

CABAC NYLON LIGHT DUTY UV



- Halogen free standard nylon cable tie
- One piece, injection moulded construction for maximum strength
- Adjustability for securing all sizes of bundles
- Rounded edges and bent tip design



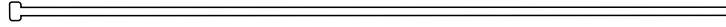
Part No.	Loop Tensile Strength (kg)	Bundle Diameter (mm)	Length (mm)	Width (mm)	Thickness (mm)	Colour	Unit	Qty
CT196BK-LD	8	53	200	2.5	1.1	BLACK	PAK	100

CABLE TIES AND MOUNTS

CABAC NYLON UV



- UV stabilised head/pawl integrally moulded for added durability. Tip designed for easy pick up, insertion and pull through
- Smooth round edges do not cut insulation
- Self-locking low profile head conserves space
- For outdoors - use UV stabilised black ties

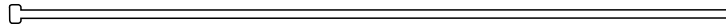


Part No.	Loop Tensile Strength (kg)	Bundle Diameter (mm)	Length (mm)	Width (mm)	Thickness (mm)	Colour	Unit	Qty
CT98BK/100	8	22	100	2.5	1.1	BLACK	PAK	100
CT98BK/1000	8	22	100	2.5	1.1	BLACK	PAK	1000
CT140BK/100	18	33	140	3.6	1.2	BLACK	PAK	100
CT140BK/1000	18	33	140	3.6	1.2	BLACK	PAK	1000
CT200BK/100	22	50	200	4.8	1.3	BLACK	PAK	100
CT200BK/1000	22	50	200	4.8	1.3	BLACK	PAK	1000
CT250BK	22	60	250	4.8	1.4	BLACK	PAK	100
CT250BK/1000	22	60	250	4.8	1.4	BLACK	PAK	1000
CT290BK	22	76	300	4.8	1.4	BLACK	PAK	100
CT290BK/1000	22	76	300	4.8	1.4	BLACK	PAK	1000
CT360BK	22	102	370	4.8	1.4	BLACK	PAK	100
CT430BK	22	110	430	4.8	1.4	BLACK	PAK	100

CABAC NYLON NATURAL



- Head and pawl are integrally moulded for added strength and durability. Tip designed for easier pick up, insertion and pull through
- Smooth round edges do not cut insulation
- Self-locking low profile head conserves space
- For outdoors - use UV stabilised black ties



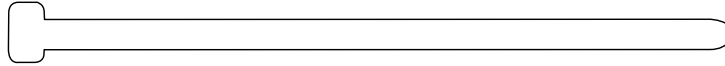
Part No.	Loop Tensile Strength (kg)	Bundle Diameter (mm)	Length (mm)	Width (mm)	Thickness (mm)	Colour	Unit	Qty
CT98NT/100	8	22	100	2.5	1.1	NATURAL	PAK	100
CT98NT/1000	8	22	100	2.5	1.1	NATURAL	PAK	1000
CT140NT/100	18	33	140	3.6	1.2	NATURAL	PAK	100
CT140NT/1000	18	33	140	3.6	1.2	NATURAL	PAK	1000
CT200NT/100	22	50	200	4.8	1.3	NATURAL	PAK	100
CT200NT/1000	22	50	200	4.8	1.3	NATURAL	PAK	1000
CT250NT	22	60	250	4.8	1.4	NATURAL	PAK	100
CT250NT/1000	22	60	250	4.8	1.4	NATURAL	PAK	1000
CT290NT	22	76	300	4.8	1.4	NATURAL	PAK	100
CT290NT/1000	22	76	300	4.8	1.4	NATURAL	PAK	1000
CT360NT	22	102	370	4.8	1.4	NATURAL	PAK	100

CABLE TIES AND MOUNTS

CABAC NYLON HEAVY DUTY UV



- UV stabilised and heavy-duty head/pawl integrally moulded for added durability. Tip designed for easy pick up, insertion and pull through
- Smooth round edges do not cut insulation
- Self-locking low profile head conserves space
- For outdoors - use UV stabilised black ties

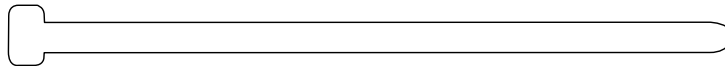


Part No.	Loop Tensile Strength (kg)	Bundle Diameter (mm)	Length (mm)	Width (mm)	Thickness (mm)	Colour	Unit	Qty
CT203BK-HD	54	50	200	7.6	2.1	BLACK	PAK	100
CT365BK-HD	54	102	370	7.6	2.1	BLACK	PAK	100
CT540BK-HD	54	140	533	7.6	2.1	BLACK	PAK	25
CT710BK-HD	79	190	710	9	2.1	BLACK	PAK	25
CT1220BK-HD	79	365	1220	9	2.1	BLACK	PAK	25
CT1530BK-HD	79	460	1530	9	2.1	BLACK	PAK	25

CABAC NYLON HEAVY DUTY NATURAL



- Heavy-duty head/pawl integrally moulded for added durability. Tip designed for easy pick up, insertion and pull through
- Smooth round edges do not cut insulation
- Self-locking low profile head conserves space
- For outdoors - use UV stabilised black ties



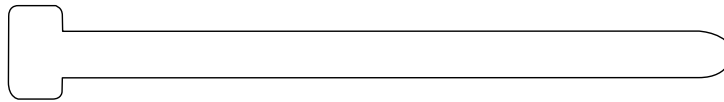
Part No.	Loop Tensile Strength (kg)	Bundle Diameter (mm)	Length (mm)	Width (mm)	Thickness (mm)	Colour	Unit	Qty
CT203NT-HD	54	50	200	7.6	2.1	NATURAL	PAK	100
CT365NT-HD	54	102	370	7.6	2.1	NATURAL	PAK	100
CT710NT-HD	79	190	710	9	2.1	NATURAL	PAK	25
CT838NT-HD	79	239	812	9	2.1	NATURAL	PAK	25

CABLE TIES AND MOUNTS

CABAC NYLON ULTRA HEAVY DUTY



- Ultra heavy-duty head/pawl integrally moulded for added durability. Tip designed for easy pick up, insertion and pull through
- Smooth round edges do not cut insulation
- Self-locking low profile head conserves space
- For outdoors - use UV stabilised black ties



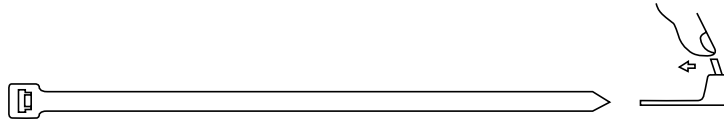
Part No.	Loop Tensile Strength (kg)	Bundle Diameter (mm)	Length (mm)	Width (mm)	Thickness (mm)	Colour	Unit	Qty
CT500BK-UHD	114	120	480	12.6	2.1	BLACK	PAK	25
CT500BK-UHD/100	114	120	480	12.6	2.1	BLACK	PAK	100
CT600BK-UHD	114	152	580	12.6	2.1	BLACK	PAK	100

NYLON RELEASABLE TIES

CABAC RELEASABLE



- Releasable head and pawl are integrally moulded for added strength and durability. Tip designed for easier pick up, insertion and pull through
- Smooth round edges do not cut insulation
- Self-locking low profile head conserves space
- For outdoors - use UV stabilised black ties



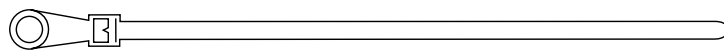
Part No.	Loop Tensile Strength (kg)	Bundle Diameter (mm)	Length (mm)	Width (mm)	Thickness (mm)	Colour	Unit	Qty
CTR140BK	18	33	140	3.6	1.2	BLACK	PAK	100
CTR200BK	22	50	200	4.8	1.3	BLACK	PAK	100
CTR290BK	22	76	300	4.8	1.4	BLACK	PAK	100
CTR365BK-HD	54	102	370	7.6	2.1	BLACK	PAK	100
CTR500NT	114	120	480	12.6	2.1	NATURAL	PAK	25

NYLON MOUNTING HEAD TIES

CABAC NATURAL



- Head and pawl are integrally moulded for added strength and durability. Tip designed for easier pick up, insertion and pull through
- Smooth round edges do not cut insulation
- Self-locking low profile head conserves space
- For outdoors - use UV stabilised black ties



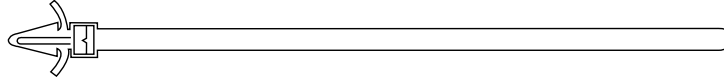
Part No.	Loop Tensile Strength (kg)	Bundle Diameter (mm)	Length (mm)	Width (mm)	Thickness (mm)	Colour	Unit	Qty
CT140MH/NT	18	32	150	3.6	1.2	NATURAL	PAK	100
CT200MH/NT	22	50	200	4.8	1.3	NATURAL	PAK	100
CT365MH/NT	54	98	375	7.6	2.1	NATURAL	PAK	100

NYLON PUSH MOUNT TIES

CABAC NATURAL



- Head and pawl are integrally moulded for added strength and durability. Tip designed for easier pick up, insertion and pull through
- Smooth round edges do not cut insulation
- Self-locking low profile head conserves space
- For outdoors - use UV stabilised black ties



Part No.	Loop Tensile Strength (kg)	Bundle Diameter (mm)	Length (mm)	Width (mm)	Thickness (mm)	Colour	Unit	Qty
CT200PM/NT	22	50	203	4.8	1.4	NATURAL	PAK	100

CABLE TIE MARKING PEN-BK

Unit: EA Qty: 1



Part No. CTMP

- For use on the CABAC range of identification ties
- Colour: Black

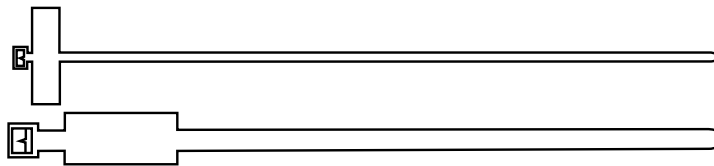


NYLON IDENTIFICATION TIES

CABAC NYLON ID



- Head and pawl are integrally moulded for added strength and durability. Tip designed for easier pick up, insertion and pull through
- Smooth round edges do not cut insulation
- Self-locking low profile head conserves space
- For outdoors - use UV stabilised black ties



Part No.	Loop Tensile Strength (kg)	Bundle Diameter (mm)	Length (mm)	Width (mm)	Thickness (mm)	Colour	Unit	Qty
CT98ID/100	8	25	100	2.5	1.1	NATURAL	PAK	100
CT200ID/NT	22	50	200	4.8	1.3	NATURAL	PAK	100

CABLE TIES AND MOUNTS

COLOURED CABLE TIES

CABAC COLOURED CABLE TIES



- Head and pawl are integrally moulded for added strength and durability. Tip designed for easier pick up, insertion and pull through
- Smooth round edges do not cut insulation
- Self-locking low profile head conserves space
- For outdoors - use UV stabilised black ties

Part No.	Loop Tensile Strength (kg)	Bundle Diameter (mm)	Length (mm)	Width (mm)	Thickness (mm)	Colour	Unit	Qty
CT98BL/100	8	22	100	2.5	1.1	BLUE	PAK	100
CT98GR/100	8	22	100	2.5	1.1	GREEN	PAK	100
CT98OR/100	8	22	100	2.5	1.1	ORANGE	PAK	100
CT98RD/100	8	22	100	2.5	1.1	RED	PAK	100
CT98YL/100	8	22	100	2.5	1.1	YELLOW	PAK	100
CT140BL/100	18	33	140	3.6	1.2	BLUE	PAK	100
CT140GR/100	18	33	140	3.6	1.2	GREEN	PAK	100
CT140OR/100	18	33	140	3.6	1.2	ORANGE	PAK	100
CT140RD/100	18	33	140	3.6	1.2	RED	PAK	100
CT140YL/100	18	33	140	3.6	1.2	YELLOW	PAK	100
CT200BL/100	22	50	200	4.8	1.3	BLUE	PAK	100
CT200GR/100	22	50	200	4.8	1.3	GREEN	PAK	100
CT200OR/100	22	50	200	4.8	1.3	ORANGE	PAK	100
CT200RD/100	22	50	200	4.8	1.3	RED	PAK	100
CT200YL/100	22	50	200	4.8	1.3	YELLOW	PAK	100
CT290BL/100	22	26	300	4.8	1.4	BLUE	PAK	100
CT290GR/100	22	26	300	4.8	1.4	GREEN	PAK	100
CT290OR/100	22	26	300	4.8	1.4	ORANGE	PAK	100
CT290RD/100	22	26	300	4.8	1.4	RED	PAK	100
CT290YL/100	22	26	300	4.8	1.4	YELLOW	PAK	100

CABLE TIE PACKS

CABAC CABLE TIE PACKS

CABLE TIE DISPENSER PACK WITH TIES

Unit: EA Qty: 1

Part No. TIEPAKBK



- This pack is unique in the way that you pick ties out of the centre of the pack, one at a time, and other ties don't come out at the same time
- The pack rolls up and creates a neat transportable pack
- Contains 6 Compartments
- Includes: 50xCT98BK, 50xCT140BK, 50xCT200BK
- 50xCT250BK, 50xCT290BK

NYLON METAL TOOTH CABLE TIES

ELEMATIC BLACK



- UV/Black cable tie in PA 6.6 with double tooth in stainless steel 316
- Up to 50 per cent more tensile strength than single tooth ties
- Working: From -40 up to 85 Degrees Celsius
- Tensile Strength: 18,36 kg
- 100 ties in a resealable bag

Part No.	Loop Tensile Strength (kg)	Bundle Diameter (mm)	Length (mm)	Width (mm)	Thickness (mm)	Colour	Unit	Qty
CT100MT-BK-LD	18	21	100	2.5	1	BLACK	PAK	100
CT140MT-BK-LD	25	35	140	3.5	1.15	BLACK	PAK	100
CT290MT-BK-LD	25	80	290	3.5	1.15	BLACK	PAK	100
CT200MT-BK	36	50	200	4.5	1.3	BLACK	PAK	100
CT290MT-BK	36	80	290	4.5	1.3	BLACK	PAK	100
CT360MT-BK	36	101	360	4.5	1.3	BLACK	PAK	100
CT360MT-BK-HD	79	101	360	7.5	1.5	BLACK	PAK	100

ELEMATIC NATURAL



- Natural cable ties in PA 6.6 with double tooth in stainless steel 316
- Up to 50 per cent more tensile strength than single tooth ties
- Working: From -40 up to 85 Degrees Celsius
- Tensile Strength: 18,36 kg
- 100 ties in a resealable bag

Part No.	Loop Tensile Strength (kg)	Bundle Diameter (mm)	Length (mm)	Width (mm)	Thickness (mm)	Colour	Unit	Qty
CT100MT-NT-LD	18	21	100	2.5	1	NATURAL	PAK	100
CT140MT-NT-LD	25	35	140	3.5	1.15	NATURAL	PAK	100
CT290MT-NT-LD	25	80	290	3.5	1.15	NATURAL	PAK	100
CT200MT-NT	36	50	200	4.5	1.3	NATURAL	PAK	100
CT290MT-NT	36	80	290	4.5	1.3	NATURAL	PAK	100
CT360MT-NT	36	101	360	4.5	1.3	NATURAL	PAK	100
CT360MT-NT-HD	79	101	360	7.5	1.5	NATURAL	PAK	100

CABLE TIES AND MOUNTS

NYLON DETECTABLE CABLE TIES

ELEMATIC



- To fix wires in electrical equipment in food industries, pharmaceutical and wherever there is a risk of contamination by external agents
- Material easily detectable by metal detectors and x-rays
- Working: From -40 up to 85 Degrees Celsius
- Tensile Strength: 8,16 kg
- 100 ties per bag

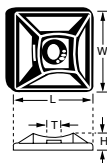
Part No.	Loop Tensile Strength (kg)	Bundle Diameter (mm)	Length (mm)	Width (mm)	Thickness (mm)	Colour	Unit	Qty
CT98DT-100	8	21	98	2.5	1	BLUE	PAK	100
CT200DT-100	22	50	200	4.8	1.4	BLUE	PAK	100
CT360DT-100	22	100	360	4.5	1.4	BLUE	PAK	100
CT360DT-HD	55	100	365	7.5	1.8	BLUE	PAK	100

STICK ON MOUNTS

CABAC ADHESIVE BLACK UV



- A low profile and 4 way base that will stick onto virtually any surface
- Choice between indoor and outdoor mount
- Outdoor stick-on mount is UV resistant

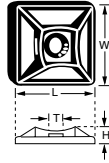


Part No.	Base Dim (L&W) (mm)	Height (H) (mm)	Maximum Tie Width (mm)	Unit	Qty
SAM12.7BK	12.7 x 12.7	3.2	2.8	PAK	100
SAM12.7BK/K	12.7 x 12.7	3.2	2.8	EA	1
SAM19BK	19.0 x 19.0	4	3.6	PAK	100
SAM19BK/K	19.0 x 19.0	4	3.6	KIT	1
SAM25BK	27.7 x 27.7	5.7	5.3	PAK	100
SAM25BK/K	27.7 x 27.7	5.7	5.3	KIT	1

CABAC ADHESIVE NATURAL INDOOR USE



- A low profile and 4 way base that will stick onto virtually any surface
- Choice between indoor and outdoor mount
- Outdoor stick-on mount is UV resistant



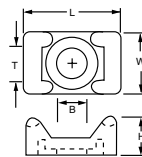
Part No.	Base Dim (L&W) (mm)	Height (H) (mm)	Maximum Tie Width (mm)	Unit	Qty
SAM12.7NT	12.7 x 12.7	3.2	2.8	PAK	100
SAM12.7NT/K	12.7 x 12.7	3.2	2.8	EA	1
SAM19NT	19.0 x 19.0	4	3.6	PAK	100
SAM19NT/K	19.0 x 19.0	4	3.6	KIT	1
SAM25NT	27.7 x 27.7	5.7	5.3	PAK	100
SAM25NT/K	27.7 x 27.7	5.7	5.3	KIT	1

SCREW MOUNTS

CABAC NYLON UV



- Designed to securely fasten cable ties to a surface
- Two way entry and deep cradle design
- Sizes accommodate standard and heavy-duty ties
- For outdoors - use UV stabilised black ties

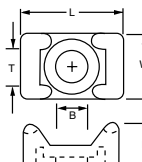


Part No.	H (mm)	L (mm)	W (mm)	T (mm)	B (mm)	Unit	Qty
CTB5BK	7	15	10	5	3	PAK	100
CTB9BK	9	23	16	9	6	PAK	100

CABAC NYLON NATURAL



- Designed to securely fasten cable ties to a surface
- Two way entry and deep cradle design
- Sizes accommodate standard and heavy-duty ties
- For outdoors - use UV stabilised black ties



Part No.	H (mm)	L (mm)	W (mm)	T (mm)	B (mm)	Unit	Qty
CTB5NT	7	15	10	5	3	PAK	100
CTB9NT	9	23	16	9	6	PAK	100

CABLE TIES AND MOUNTS

CABLE TIE ANCHORS

CABAC NYLON ANCHOR UV



- A quick and simple way to create an anchor point in just about any material e.g. concrete, brick and wood
- Christmas tree design - deforms outwards when driven into a hole
- Made from Nylon 66
- For outdoors - use UV stabilised black ties

Part No.	Hole Maximum Dia. (mm)	Mount Dia. (mm)	Drill Hole Dia. (mm)	Depth (mm)	Unit	Qty
CH5	5	2.4 x 6	5	30	PAK	100
CH8	9	3.0 x 10	8.5-9	40	PAK	50
CH9	9, 8 STAND OFF	3.0 x 10	8.5-9	40	PAK	50
LOX01B	6	2.4 x 10	6	30	PAK	100

CABAC NYLON PUSH MOUNT NATURAL



- Installed by snapping easily into a standard 6.4mm hole
- Centering ears and locking barb design hold securely
- Secures standard and light-duty ties

Part No.	Base Dimensions (mm)	Height (mm)	Max Tie Width (mm)	Panel Hole (mm)	Unit	Qty
CTPM1/NT	7.9 x 14	17	4.8	6.3	PAK	100

PRO CABLE TIES

PRO HOOK AND LOOP TAPE BLACK



- Hook & loop tape to bundle UTP cable or bind to cable support
- Supplied in reels - cut to length onsite
- Reusable - use as many times as you like
- Available in various widths and lengths

Part No.	Description	Unit	Qty
VT10BK/5M	PRO CABLE TIE - REEL 10MM X 5M - BLACK	EA	1
VT10BK/10M	PRO CABLE TIE - REEL 10MM X 10M - BLACK	EA	1
VT12BK/50M	PRO CABLE TIE 12MM 2 X 25M ROLL BLACK	EA	1
VT15BK/5M	PRO CABLE TIE - REEL 15MM X 5M - BLACK	EA	1
VT15BK/10M	PRO CABLE TIE - REEL 15MM X 10M - BLACK	EA	1
VT19BK/25M	PRO CABLE TIE 19MM X 25M ROLL BLACK	EA	1
VT25BK-25M	PRO CABLE TIE 25MM X 25M ROLL BLACK	EA	1

PRO HOOK AND LOOP TAPE BLUE



- Hook and loop tape to bundle UTP cable or bind to cable support
- Supplied in reels - cut to length onsite
- Reusable - use as many times as you like
- Available in various widths and lengths

Part No.	Description	Unit	Qty
VT10BL/5M	PRO CABLE TIE - REEL 10MM X 5M - BLUE	EA	1
VT10BL/10M	PRO CABLE TIE - REEL 10MM X 10M - BLUE	EA	1
VT15BL/5M	PRO CABLE TIE - REEL 15MM X 5M - BLUE	EA	1
VT15BL/10M	PRO CABLE TIE - REEL 15MM X 10M - BLUE	EA	1

PRO HOOK AND LOOP TIES



- Pre-cut cable ties for easy installation
- Fully adjustable and reusable
- Ideal for bundling cables behind desk
- Colour: blue

Part No.	Description	Unit	Qty
VTIEBL2-X	PRO CABLE TIE 13*200MM BLUE 10PK	EA	1
VTIEBL3-X	PRO CABLE TIE 20*300MM BLUE 10PK	EA	1

20 YEARS (LIMITED) WARRANTY*

Premium range stainless steel cables ties are the only ties in the industry that are covered by 20 years (limited) warranty.*

CABAC's Stainless Steel Cable Ties are a quick, effective way of securing cables that are in a hostile environment.

They have a unique ball bearing locking mechanism that allows the tie to be quickly and easily installed, but not undone.

They install much quicker than traditional strapping systems.

The heavy duty ties have an off-set tip to speed insertion of the tie.

The ties are made from 316 non-magnetic stainless steel.

*See CABAC website for full terms and conditions on warranty terms.



CABLE TIES AND MOUNTS

STAINLESS STEEL TIES

CABAC STAINLESS STEEL PREMIUM



- Resistant to hostile environments including chemicals
- Standard width and heavy-duty width available
- Improved fastening system and quick installation
- 20 years limited warranty



Part No.	Max Bundle Dia. (mm)	Approx. Length (mm)	Approx. Width (mm)	Min Loop Tensile Strength (kg)	Thickness (mm)	Unit	Qty
SST200/316	50	201	4.6	44	0.25	BOX	100
SST360/316	102	360	4.6	44	0.25	BOX	100
SST520/316	152	520	4.6	44	0.25	BOX	100
SST680/316	203	680	4.6	44	0.25	BOX	100

CABAC STAINLESS STEEL PREMIUM HEAVY DUTY



- Resistant to hostile environments including chemicals
- Standard width and heavy-duty width available
- Improved fastening system and quick installation
- 20 years limited warranty



Part No.	Max Bundle Dia. (mm)	Approx. Length (mm)	Approx. Width (mm)	Min Loop Tensile Strength (kg)	Thickness (mm)	Unit	Qty
SST200-HD/316	50	201	7.9	113	0.25	BOX	50
SST360-HD/316	102	360	7.9	113	0.25	BOX	50
SST520-HD/316	152	520	7.9	113	0.25	BOX	50
SST680-HD/316	203	680	7.9	113	0.25	BOX	50
SST838-HD/316	254	838	7.9	113	0.25	BOX	50
SST1000-HD/316	298	1000	7.9	113	0.25	BOX	50
SST1500-HD/316	450	1500	7.9	113	0.25	BOX	50

CABAC STAINLESS STEEL STANDARD



- Self-locking head design speeds installation and locks into place at any length along the body
- Provides a strong, durable method of cable bundling
- No water absorption
- Non-flammable
- SS316 material for most corrosive environments

Part No.	Max Bundle Dia. (mm)	Approx. Length (mm)	Approx. Width (mm)	Min Loop Tensile Strength (kg)	Thickness (mm)	Unit	Qty
SST200-316S	51	200	4.6	90	0.25	BOX	100
SST360-316S	102	360	4.6	90	0.25	BOX	100
SST520-316S	152	520	4.6	90	0.25	BOX	100
SST680-316S	203	680	4.6	90	0.25	BOX	100

CABLE TIES AND MOUNTS

CABAC STAINLESS STEEL STANDARD HEAVY DUTY



- Self-locking head design speeds installation and locks into place at any length along the body
- Provides a strong, durable method of cable bundling
- No water absorption
- Non-flammable
- SS316 material for most corrosive environments

Part No.	Max Bundle Dia. (mm)	Approx. Length (mm)	Approx. Width (mm)	Min Loop Tensile Strength (kg)	Thickness (mm)	Unit	Qty
SST200-HD-316S	51	200	7.9	150	0.25	BOX	50
SST360-HD-316S	102	360	7.9	150	0.25	BOX	50
SST520-HD-316S	152	520	7.9	150	0.25	BOX	50
SST680-HD-316S	203	680	7.9	150	0.25	BOX	50
SST838-HD-316S	254	840	7.9	150	0.25	BOX	50
SST1000-HD-316S	300	1000	7.9	150	0.25	BOX	50
SST1500-HD-316S	465	1500	7.9	150	0.25	BOX	50

ECCO STAINLESS STEEL



- Designed for high temperature applications in severe environmental conditions
- Material: Stainless Steel 316SS



Part No.	Description	Unit	Qty
M201490	C/TIE STAINLESS STEEL 316 200 X 4.8MM	PAK	100
M201505	C/TIE STAINLESS STEEL 316 H/DUTY 200 X 7	PAK	50

CABAC STAINLESS STEEL PREMIUM COATED



- Halogen free 316 Stainless steel cable ties with a epoxy coating providing smooth surface and rounded edges for operator safety
- Use in highly corrosive environments
- Epoxy coating protects cable from sharp edges
- Standard and heavy-duty range available

Part No.	Max Bundle Dia. (mm)	Approx. Length (mm)	Approx. Width (mm)	Min Loop Tensile Strength (kg)	Thickness (mm)	Unit	Qty
STFC200-316	50	201	4.6	45.4	0.25	BOX	100
STFC360-316	102	360	4.6	45.4	0.25	BOX	100

CABLE TIES AND MOUNTS

CABAC STAINLESS STEEL PREMIUM COATED H/DUTY



- Halogen free 316 Stainless steel cable ties with a epoxy coating providing smooth surface and rounded edges for operator safety
- Use in highly corrosive environments
- Epoxy coating protects cable from sharp edges
- Standard and heavy-duty range available

Part No.	Max Bundle Dia. (mm)	Approx. Length (mm)	Approx. Width (mm)	Min Loop Tensile Strength (kg)	Thickness (mm)	Unit	Qty
STFC200-HD-316	50	201	7.9	113.4	0.25	BOX	50
STFC360-HD-316	102	360	7.9	113.4	0.25	BOX	50

CABAC STAINLESS STEEL STANDARD COATED



- Polyester resin coated stainless steel cable ties
- Strong, durable method of cable bundling
- Rounded edges ensure cable protection and worker safety
- UV resistant, low smoke, halogen-free material

Part No.	Max Bundle Dia. (mm)	Approx. Length (mm)	Approx. Width (mm)	Min Loop Tensile Strength (kg)	Thickness (mm)	Unit	Qty
STFC200-316S	51	200	4.6	90	0.38	BOX	100
STFC360-316S	102	360	4.6	90	0.38	BOX	100

CABAC STAINLESS STEEL STANDARD COATED H/DUTY



- Polyester resin coated stainless steel cable ties
- Strong, durable method of cable bundling
- Rounded edges ensure cable protection and worker safety
- UV resistant, low smoke, halogen-free material

Part No.	Max Bundle Dia. (mm)	Approx. Length (mm)	Approx. Width (mm)	Min Loop Tensile Strength (kg)	Thickness (mm)	Unit	Qty
STFC200-HD-316S	51	200	7.9	150	0.38	BOX	50
STFC360-HD-316S	102	360	7.9	150	0.38	BOX	50
STFC520-HD-316S	152	520	7.9	150	0.38	BOX	50
STFC680-HD-316S	203	680	7.9	150	0.38	BOX	50

CABAC STAINLESS STEEL PVC COATED

S/STEEL TIE PVC COVER 30M ROLL 1.2MM

Unit: ROL Qty: 1



Part No. SSCHD

- PVC protective cable tie cover providing smooth surface and rounded edges for operator safety
- Available in 30 metre reels
- PVC coating protects cable from sharp cable tie edges

CABLE MANAGEMENT AND FIXING

Braided Sleeving

CABAC's Braided Sleeving is an expandable flexible harness, manufactured from monofilament polyester. It's main characteristic consists in the construction of the braiding which allows the product to increase its interior diameter considerably and at the same time contracting in length.

Wire harnessing is made easy due to the expandability and ease of insertion of different diameters within the same sleeving. Wires can also be poked through the sleeving at any point, to do harness breakouts.

- Mechanical and thermal protection of conductors
- Expandable
- Heat resistant
- Self extinguishing
- Resistant to aggressive agents
- Easy to install

The sleeving is available on reels and in handy kit packs, and is coloured black.

The quality control specification for a standard reel ensures that there should not be more than one joint per spool.

Technical Data

Conformant Standards	IEC684-349, UL 224
Material	Polyester
Operating Temperature	-50°C to 150°C
Expansion Ratio	1:2
Monofilament Diameter	0.22mm
Flammability	Self extinguishing
Chemical Resistance	Resistant to most aggressive chemicals



BRAIDED SLEEVING

CABAC BRAIDED SLEEVE POLYESTER



- Unique braiding design allows product to increase interior diameter considerably at the same time contracting in length
- Flexible harness manufactured from monofilament polyester
- Expandable, heat resistant and self-extinguishing
- Available on reels and in handy kit packs



Part No.	Description	Nominal ID (mm)	ID Minimum (mm)	ID Maximum (mm)	Unit	Qty
EPBS4	EXP.POLYESTER BRAID SLEEVE 3-7MM 100M	4	3	7	ROL	1
EPBS6	EXP.POLYESTER BRAID SLEEVE 5-10MM 100M	6	5	10	ROL	1
EPBS10	EXP.POLYESTER BRAID SLEEVE 8-16MM 100M	10	8	16	ROL	1
EPBS15	EXP.POLYESTER BRAID SLEEVE 12-22MM 100M	15	12	22	ROL	1
EPBS20	EXP.POLYESTER BRAID SLEEVE 15-27MM 100M	20	15	27	ROL	1
EPBS25	EXP.POLYESTER BRAID SLEEVE 20-35MM 100M	25	20	35	ROL	1
EPBS30	EXP.POLYESTER BRAID SLEEVE 25-45MM 100M	30	25	45	ROL	1
EPBS40	EXP.POLYESTER BRAID SLEEVE 35-60MM 50M	40	35	60	ROL	1
EPBS50	EXP.POLYESTER BRAID SLEEVE 45-73MM 50M	50	45	73	ROL	1
EPBS4/K	KIT OF 10M EPBS4	4	3	7	KIT	1
EPBS6/K	KIT OF 8M EPBS6	6	5	10	KIT	1
EPBS10/K	KIT OF 5M EPBS10	10	8	16	KIT	1
EPBS15/K	KIT OF 4M EPBS15	15	12	22	KIT	1
EPBS20/K	KIT OF 4M EPBS20	20	15	27	KIT	1
EPBS25/K	KIT OF 3M EPBS25	25	20	35	KIT	1
EPBS30/K	KIT OF 3M EPBS30	30	25	45	KIT	1

Stainless Steel Strapping System (Cabstrap)

CABAC's Stainless Steel Strapping System is a quick and effective way of securing or clamping items.

Typical uses are securing cables to poles, signs to poles, switch boards, pipes etc.

- The strap has a high clamping force, which attaches things very securely, giving long term stability
- The strap is made from 304 series stainless steel, which can withstand extreme acidity, alkalinity and highly corrosive environments. As such it can be used in chemical, food, hospital, dairies and power generation
- The strap is hard to cut or undo which means items are securely fastened
- Stainless 304 is non-magnetic
- Standard reels are 30m

Installation of CABSTRAP is simple using the CABSTRAPTOOL, which will tension the strap and cut it off, giving a clean finish.



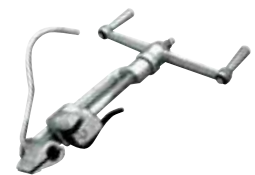
Technical Data

Material	Stainless Steel 304 grade
Yield strength	205 MPa
Operating temp	-80°C to +500°C
Loop tensile strength	Heavy duty range 110kg
Resistance to Chemicals	High resistance to: Petrol, Benzene, Alcohol, Acetone, Sodium hydroxide, Sodium phosphate, Formic acid, Acetic acid, Sulphuric acid/dilute, Marine.
In general very resistant to most hostile environments.	



CABSTRAPTOOL2

Stainless steel strapping system is a quick and effective way of securing or clamping strap.



CABSTRAPTOOL

Heavy duty tensioning and cutting tool for the stainless steel straps 9.5 to 19.0mm wide.

CABSTRAPPING

CABAC STAINLESS STEEL STRAP



- Resistant to extreme acidity, alkalinity and highly corrosive environments use to secure cables to poles, signs to poles, switch boards etc.
- High clamping force - long term stability
- Made from 304SS - suitable for highly corrosive environments
- Securely fastened - straps hard to cut or undo



Part No.	Description	Unit	Qty
CABSTRAP9.5	CABAC 9.5MM S/STEEL 304SS STRAP 30M.	EA	1
CABSTRAP12.7	CABAC 12.7MM S/STEEL 304SS STRAP 30M	EA	1
CABSTRAP15.8	CABAC 15.8MM S/STEEL 304SS STRAP 30M	EA	1
CABSTRAP19.0	CABAC 19.0MM S/STEEL 304SS STRAP 30M	EA	1

CABAC STAINLESS STEEL BUCKLE



- Resistant to extreme acidity, alkalinity and highly corrosive environments use to secure cables to poles, signs to poles, switch boards etc.
- High clamping force - long term stability
- Used in food, hospital, dairies and power generation areas
- Securely fastened - straps hard to cut or undo



Part No.	Description	Unit	Qty
CABBUCKLE9.5	CABAC 9.5MM S/STEEL 304SS BUCKLE 100 PK	EA	1
CABBUCKLE12.7	CABAC 12.7MM S/STEEL 304SS BUCKLE 100 PK	EA	1
CABBUCKLE15.8	CABAC 15.8MM S/STEEL 304SS BUCKLE 100PK	EA	1
CABBUCKLE19.0	CABAC 19.0MM S/STEEL 304SS BUCKLE 100 PK	EA	1

CABLE MANAGEMENT AND FIXING

CABAC STAINLESS STEEL STRAP TOOL STAINLESS STEEL STRAP TOOL (CH-240)

Unit: EA Qty: 1



Part No. CABSTRAPTOOL2

- Installation of S/Steel CABSTRAP is simple using the CABSTRAPTOOL, which will tension the strap and cut it off, giving a clean finish
- Use with our CABSTRAP range of Stainless Steel Ties

CABAC STAINLESS STEEL STRAP TOOL

Unit: EA Qty: 1



Part No. CABSTRAPTOOL

- Heavy-duty tensioning and cutting tool
- Use with stainless steel straps 9.5-19mm

SPIRAL BINDING

CABAC SPIRAL BINDING BLACK



- Designed to wrap around bundles of wires to make neat looms and to protect the conductors
- Choice between indoor and outdoor binding
- Outdoor binding is UV stabilized (2% carbon black)
- Supplied in easy use cardboard dispenser boxes

Part No.	Description	Unit	Qty
SB3BK	SPIRAL BINDING 3MM BLACK (100M)	BOX	1
SBK3BK	SPIRAL BINDING KIT 3MM BLACK (10M)	KIT	1
SB6BK	SPIRAL BINDING 6MM BLACK (50M)	BOX	1
SBK6BK	SPIRAL BINDING KIT 6MM BLACK (10M)	KIT	1
SB6BK-400	SPIRAL BINDING 6MM BLACK (400M)	ROL	400
SB12BK	SPIRAL BINDING 12MM BLACK (25M)	BOX	1
SBK12BK	SPIRAL BINDING KIT 12MM BLACK (5M)	KIT	1
SB12BK-150	SPIRAL BINDING 12MM BLACK (150M)	ROL	150
SB16BK	SPIRAL BINDING 16MM BLACK (20M)	BOX	1
SBK16BK	SPIRAL BINDING KIT 16MM BLACK (3M)	KIT	1
SBK20BK	SPIRAL BINDING KIT 20MM BLACK (2M)	KIT	1
SB20BK	SPIRAL BINDING 20MM BLACK (15M)	BOX	1

CABAC SPIRAL BINDING NATURAL



- Designed to wrap around bundles of wires to make neat looms and to protect the conductors
- Choice between indoor and outdoor binding
- Outdoor binding is UV resistant
- Supplied in easy use cardboard dispenser boxes

Part No.	Description	ID Minimum (mm)	ID Maximum (mm)	Unit	Qty
SB3NT	SPIRAL BINDING 3MM NATURAL (100M)	3	9	BOX	1
SBK6NT	SPIRAL BINDING KIT 6MM NATURAL (10M)	5	12	KIT	1
SB6NT	SPIRAL BINDING 6MM NATURAL (50M)	5	12	BOX	1
SB6NT-400	6MM NATURAL SPIRAL BINDING (400M REEL)			M	1
SBK12NT	SPIRAL BINDING KIT 12MM NATURAL (5M)	12	20	KIT	1
SB12NT	SPIRAL BINDING 12MM NATURAL (25M)	12	20	BOX	1
SB12NT-150	SPIRAL BINDING 12MM NATURAL (150M)			ROL	150
SBK16NT	SPIRAL BINDING KIT 16MM NATURAL (3M)	16	35	KIT	1
SB16NT	SPIRAL BINDING 16MM NATURAL (20M)	16	35	BOX	1
SBK20NT	SPIRAL BINDING KIT 20MM NATURAL (2M)	20	100	KIT	1
SB20NT	SPIRAL BINDING 20MM NATURAL (15M)	20	100	BOX	1
SBK3NT	SPIRAL BINDING KIT 3MM NATURAL (10M)	3	9	KIT	1

LOOM TUBE

CABAC LOOM TUBE



- A Simple way to create looms from loose wires by making a harness
- Crush proof and flame retardant
- UV stabilised and resistant to chemicals
- Quick installation time

Part No.	Inner Dia of Tube (mm)	Outer Dia of Tube (mm)	Wall Thickness (mm)	Unit	Qty
LT7	7.2	10.2	0.25	ROL	1
LT7/400	7.2	10.2	0.25	ROL	1
LT10	10.5	14	0.25	ROL	1
LT10/250	10.5	14	0.25	ROL	1
LT13	13	17.5	0.3	ROL	1
LT13/150	13	17.5	0.3	ROL	1
LT16	16	20	0.3	ROL	1
LT16/100	16	20	0.3	ROL	1
LT20	20	25	0.3	ROL	1
LT20/100	20	25	0.3	ROL	1
LT25	27	34.5	0.35	ROL	1
LT25/50	27	34.5	0.35	ROL	1
LT36	36	41	0.35	ROL	1
LT48	48	53.5	0.35	ROL	1

EASY WRAP BINDING

CABAC EASY WRAP BINDING



- A unique solution to a messy problem - Easy Wrap zips along cables, creating a quick and easy bundling solution
- Easier to apply than traditional solutions like loom tube
- Wraps around cables for a secure closure
- Adjustable and reusable

Part No.	Description	Unit	Qty
EW16BK/K	EASY WRAP 16MM BLACK 1.5M & CLIPPER KIT	KIT	1
EW20BK/K	EASY WRAP 20MM BLACK 1.5M & CLIPPER KIT	KIT	1
EW20BK	EASY WRAP 20MM BLACK 20M	BOX	20

CABLE MANAGEMENT AND FIXING

FIBREGLASS SLEEVING

CABAC FIBREGLASS SLEEVING



- Fibreglass sleeving with a silicon rubber finish - flexible, flame retardant, water repellent and recommended for high temperature applications
- Apply over metallic wires for electrical/mechanical protection
- Tight weave ensures that sleeve maintains round shape
- Used to insulate high temperature components

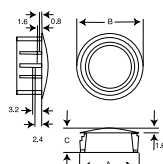
Part No.	Description	Unit	Qty
GS1.5	FIBRE GLASS SLEEVING 1.5MM	4FT	1
GS1.5R	FIBRE GLASS SLEEVING 1.5MM 100M REEL	ROL	100
GS2.5	FIBRE GLASS SLEEVING 2.5MM	4FT	1
GS2.5R	FIBRE GLASS SLEEVING 2.5MM 100M REEL	ROL	100
GS3.5R	FIBRE GLASS SLEEVING 3.5MM 100M REEL	ROL	100
GS5	FIBRE GLASS SLEEVING 5MM	4FT	1
GS5R	FIBRE GLASS SLEEVING 5MM 100M REEL	ROL	100
GS7	FIBRE GLASS SLEEVING 7MM	4FT	1
GS7R	FIBRE GLASS SLEEVING 7MM 100M REEL	ROL	100
GS10	FIBRE GLASS SLEEVING 10MM	4FT	1
GS10R	FIBRE GLASS SLEEVING 10MM 100M REEL	ROL	100
GS12	FIBRE GLASS SLEEVING 12MM	4FT	1
GS12R	FIBRE GLASS SLEEVING 12.0MM 100M REEL	ROL	100

BUSHES AND PLUGS

CABAC BUSHES NYLON



- Quick and simple way to protect a cable from sharp edges in penetrations and panel holes
- Snap into place with self locking teeth
- Available in a range of sizes
- Also used with our range of Nylon plugs



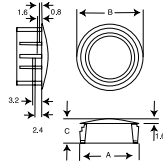
Part No.	Chassis Thickness (mm)	(A) Hole Size (mm)	Inner Dia. B (mm)	Outer Dia. C (mm)	Height L (mm)	Unit	Qty
NSB8	0.8-3.2	7.8	5.2	9.4	8	PAK	100
NSB10	0.8-3.2	9.5	6.3	12	10.3	PAK	100
NSB13	0.8-3.2	12.7	8.2	14.5	10.3	PAK	100
NSB16	0.8-3.2	15.9	12.2	18.6	10.3	PAK	100
NSB19	0.8-3.2	22	17.3	23.8	11.5	PAK	50
NSB22	0.8-3.2	22	17.3	23.8	11.5	PAK	25
NSB25	0.8-3.2	25.1	19.1	28	11.5	PAK	25
NSB30	0.8-3.2	29.7	24.1	32.3	11.5	PAK	25
NSB38	0.8-3.2	38.1	29	41.2	11.4	PAK	10
NSB45	0.8-3.2	43.6	35.4	47.8	11.6	PAK	10
NSB50	0.8-3.2	49.6	41.5	54	11.6	PAK	5

CABLE MANAGEMENT AND FIXING

CABAC SNAP BUSHES SPLIT NYLON



- Range taking advantage and can be retro-fitted to a cord if necessary
- Panel hole size is not as critical
- Fixed bushes snap into place
- Self contained teeth for secure fit

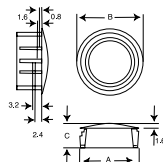


Part No.	Chassis Thickness (mm)	(A) Hole Size (mm)	Inner Dia. B (mm)	Outer Dia. C (mm)	Height L (mm)	Unit	Qty
SNSB10	0.8-3.2	9.5	6.7	10.7	10.3	PAK	100
SNSB13	0.8-3.2	12.7	8	14.2	10.3	PAK	100
SNSB16	0.8-3.2	15.9	11.5	17.7	10.3	PAK	100
SNSB19	0.8-3.2	19	13.1	20.2	10.3	PAK	50
SNSB22	0.8-3.2	22	17	23.4	10.3	PAK	25
SNSB25	0.8-3.2	25.1	20.2	27	10.3	PAK	25

CABAC HOLE PLUGS



- Handy nylon plugs that snap into holes in a panel or chassis
- Available in a range of sizes
- Also used with our range of Rubber Grommets



Part No.	Chassis Thickness (mm)	(A) Hole Size (mm)	Inner Dia. B (mm)	Outer Dia. C (mm)	Height L (mm)	Unit	Qty
NP8	0.8 to 3.2	7.8	11.9	8	0	PAK	100
NP10	0.8 to 3.2	9.5	13	10.5	0	PAK	100
NP13	0.8 to 3.2	12.7	16.9	10.5	0	PAK	100
NP16	0.8 to 3.2	15.9	19.8	10.5	0	PAK	100
NP19	0.8 to 3.2	19	22.9	10.5	0	PAK	50
NP22	0.8 to 3.2	22.2	24.9	11.3	0	PAK	25
NP25	0.8 to 3.2	25	28.3	11.5	0	PAK	25
NP30	0.8 to 3.2	30	34.2	11.5	0	PAK	25
NP45	0.8 to 3.2	45	49.1	11.1	0	PAK	5

STRAIN RELIEF BUSHINGS

CABAC STRAIN RELIEF BUSHINGS



- Used to connect power to equipment, light fittings and lamps.

Part No.	Cable OD (mm)	Panel Hole (mm)	(A) Flat Dia. (mm)	(B) Max. Thickness	(F) Length (mm)	Unit	Qty
SRB6N-4	7.6	15.9	14	1.6	14.8	PAK	25
SRB5P-4	6.4-7.4	12.7-13.1	11.5	2.5	11	PAK	25

CABLE MANAGEMENT AND FIXING

CABAC STRAIN RELIEF BUSHING TOOL STRAIN RELIEF BUSHING TOOL

Unit: EA Qty: 1



Part No. SRBTOOL

- Used to insert our range of Strain Relief Bushings into a panel hole
- Use with our SRB strain relief bush range



GROMMETS

CABAC FLEXIBLE GROMMETS



- Protects cables against sharp edges and abrasion on panel holes
- Supplied in 2m rolls and can be cut to length
- Snaps into place
- Fits circular or irregular shapes

Part No.	Suitability	OD Cable Range (mm)	Panel Hole (mm)	(A) Flat Dia. (mm)	(B) Max. Thickness (mm)	(F) Length (mm)	Unit	Qty
FG1							ROL	1
FG1.6							ROL	1
FG2.4							ROL	1
FG3.2							ROL	1
FG4.5							ROL	1

CABAC RUBBER GROMMETS



- Protect wires from sharp corners in panels and chassis holes
- Available in a range of sizes

Part No.	Chassis Thickness (mm)	(A) Hole Size (mm)	Inner Dia. B (mm)	Outer Dia. C (mm)	Height L (mm)	Unit	Qty
RGM6	1.7	6	3	8.7	4.7	PAK	100
RGM7	1.7	7.2	5	10.2	4.4	PAK	100
RGM10	1.7	10	6.4	13.3	6.3	PAK	100
RGM20	1.7	20	15.5	23.7	6.1	PAK	50
RGM25	1.5	25	18.9	29.9	7.2	PAK	25
RGM32	1.5	32	25	38.1	7.8	PAK	25
RGM50	1.5	0	0	58	8	PAK	25

FIXINGS

ECCO CONDUIT SADDLE FULL



- Galvanised and reinforced for strength
- 5.5 mm hole fixing

Part No.	Description	Unit	Qty
M050012	CONDUIT FULL SADDLE ST ZINC PL 12MM	BOX	100
M050016	CONDUIT FULL SADDLE ST ZINC PL 16MM	BOX	100
M050020	CONDUIT FULL SADDLE ST ZINC PL 20MM	BOX	100
M050025	CONDUIT FULL SADDLE ST ZINC PL 25MM	BOX	100
M050032	CONDUIT FULL SADDLE ST ZINC PL 32MM	BOX	50
M050040	CONDUIT FULL SADDLE ST ZINC PL 40MM	PAK	50
M050050	CONDUIT FULL SADDLE ST ZINC PL 50MM	BOX	20

ECCO CONDUIT SADDLE HALF



- Manufactured from high grade steel
- Plated Zinc galvanised to 5um

Part No.	Description	Unit	Qty
M051016	CONDUIT HALF SADDLE ST ZINC PL 16MM	PAK	100
M051020	CONDUIT HALF SADDLE ST ZINC PL 20MM	BOX	100
M051025	CONDUIT HALF SADDLE ST ZINC PL 25MM	BOX	100
M051032	CONDUIT HALF SADDLE ST ZINC PL 32MM	BOX	50
M051040	CONDUIT HALF SADDLE ST ZINC PL 40MM	BOX	50
M051050	CONDUIT HALF SADDLE ST ZINC PL 50MM	BOX	20

POWERS SPRING TOGGLE SPRING TOGGLE CUP HOOK 3/16 X 3

Unit: BOX Qty: 100



- Part No. M010489**
- Suitable for plasterboard
 - Cup hook spring toggle
 - Available in drill diameters of 13mm

CABLE MANAGEMENT AND FIXING



- Suitable for plasterboard
- Round head
- Available in drill diameters of 10mm and 13mm

Part No.	Description	Unit	Qty
M010485	SPRING TOGGLE ROUND HEAD 3/16X3	BOX	50
M010484	SPRING TOGGLE ROUND HEAD 3/16X2	BOX	50
M010482	SPRING TOGGLE ROUND HEAD 1/8X2	BOX	50
M014484	SPRING TOGGLE ROUND HEAD 3 1/16 X 2	PAK	25

POWERS POLY TOGGLE

POLY TOGGLE MEDIUM 13-16MM

Unit: BOX Qty: 100



Part No. M010493

- Suitable for plasterboard
- Medium 13-16mm
- Drill diameter 8mm

POLY TOGGLE (50 PK)

Unit: PAK Qty: 50



Part No. M011589

- For fixing of curtain tracks, cupboard hooks, notice boards, pictures
- Light duty fixings

MECHANICAL ANCHORS

POWERS ANCHORS WALLBOARD

LEGS WALLBOARD ANCHOR

Unit: BOX Qty: 100



Part No. M010501

- 3.5 - 4mm thickness
- 10mm wall suitable
- Power part nr: LEGS

HOLLOW WALL ANCHOR TOOL- LOW REP

Unit: EA Qty: 1



Part No. HWAST-100

- Hollow wall anchor light-duty tool
- Low repetition
- Easy to use



HOLLOW SET DROP-IN M10

Unit: BOX Qty: 100



Part No. M010152

- For anchoring in hollow base materials e.g. hollow concrete block, brick with holes and hollow core pre-cast concrete panel
- May also be used in solid base materials
- Carbon steel cone



HOLLOW WALL ANCHOR 3/16

Unit: PAK Qty: 25



Part No. M011588

- Light duty, cavity fixing
- for plasterboard and other hollow wall material



POWERS ANCHORS HOLLOW WALL



- Suitable for plasterboard
- Zinc clear
- Available in drill diameters of 8mm 10mm and 11mm



Part No.	Description	Unit	Qty
M010472	HOLLOW WALL ANC 1/8 DIA.(W4-5MM)	BOX	100
M010473	HOLLOW WALL ANC 1/8 DIA.(W10-12MM)	BOX	100
M010474	HOLLOW WALL ANC W1 1/8 DIA. DRIVE	BOX	100
M010475	HOLLOW WALL ANC 1/8 DIA.(W3-16MM)	BOX	100
M010476	HOLLOW WALL ANC 1/8 DIA.(W16-24MM)	BOX	100
M010477	HOLLOW WALL ANC 1/8 DIA. (W 32 - 36MM)	PAK	50
M010478	HOLLOW WALL ANC 3/6 DIA.(W10-16MM)	BOX	50
M010479	HOLLOW WALL ANCHOR 1/4 DIA (W 10 - 12MM)	BOX	50

CABLE MANAGEMENT AND FIXING

POWERS ANCHORS METAL PIN



- Suitable for concrete, solid brick, solid block, and grout filled block
- Metal pin anchor
- Available in drill diameters of 5mm and 6.5mm



Part No.	Description	Unit	Qty
M010461	METAL PIN ANCHOR 5 X 22MM	BOX	100
M010463	METAL PIN ANCHOR 6.5X25MM	BOX	100

NAIL-IN ANCHOR ROUND HEAD S/STEEL 5X25

Unit: BOX Qty: 100



Part No. M010435

- Suitable for concrete, solid brick, solid block, and grout filled block
- Round head and mushroom head
- 304 Grade Stainless Steel pin



ROUND HEAD METAL THREAD 5 / 32

Unit: PAK Qty: 100

Part No. M011623

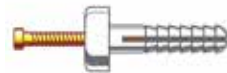
- Round Head Metal Thread
- Size: 5/32 x 1



POWERS ANCHORS NAIL-IN ROUND THREAD



- Suitable for concrete, solid brick, solid block, and grout filled block
- Round head
- Material: Nylon



Part No.	Description	Unit	Qty
M010425	NAIL-IN ANCHOR ROUND HEAD 5X25MM	BOX	100
M010426	NAIL-IN ANCHOR ROUND HEAD 5X40MM	BOX	100
M010427	NAIL-IN ANCHOR ROUND HEAD 6.5X25MM	BOX	100
M010428	NAIL-IN ANCHOR ROUND HEAD 6.5X38MM	BOX	100
M014427	NAIL-IN ANCHOR ROUND HEAD 6.5 X 25MM	PAK	80
M014428	NAIL-IN ANCHOR ROUND HEAD 6.5 X 40MM	PAK	60

CABLE MANAGEMENT AND FIXING

POWERS ANCHORS SLEEVE BOLT SLEEVE ANCHOR TIE WIRE BOLT 6.0 X 60MM

Unit: BOX Qty: 100



Part No. M010089

- Powers Part TW6560T
- Tie Wire 6 x 60mm
- Carbon Steel Yellow Passivated



SLEEVE ANCHOR HOOK BOLT 8.0 X 45MM

Unit: BOX Qty: 100



Part No. M010088

- Carbon Steel Yellow Passivated
- Powers Sleeve Anchor Bolt



SLEEVE ANCHOR EYE BOLT 8 X 45MM

Unit: BOX Qty: 100



Part No. M010087

- Economical, traditional fixing sleeve anchors
- Galvanised carbon steel
- Can be used in concrete block, brick and stone



POWERS ANCHORS SLEEVE GALVANISED

- Carbon Steel Yellow Passivated
- Powers Sleeve Anchor Bolt



Part No.	Description	Unit	Qty
M010039	SLEEVE ANCHOR GALV 8.0 X 40MM	BOX	100
M010042	SLEEVE ANCHOR GALV 10.0 X 40MM	BOX	50
M010043	SLEEVE ANCHOR GALV 10.0 X 50MM	BOX	50
M010044	SLEEVE ANCHOR GALV 10.0 X 60MM	BOX	50
M010045	SLEEVE ANCHOR GALV 10.0 X 75MM	BOX	50
M010047	SLEEVE ANCHOR GALV 12.0 X 60MM	BOX	50
M010048	SLEEVE ANCHOR GALV 12.0 X 75MM	BOX	25

CABLE MANAGEMENT AND FIXING

ZINC PLATED HEX NUT 3/16 PK100

Unit: EA Qty: 1



Part No. M011614

- Yellow passivated
- Hex Nut
- Pack of 100

POWERS ANCHORS SLEEVE HEX NUT



- Economical, traditional fixing sleeve anchors
- Carbon steel yellow passivated
- Can be used in concrete block, brick and stone

Part No.	Description	Unit	Qty
M010001	SLEEVE ANCHOR HEX NUT MS 6.5X20MM	BOX	100
M010003	SLEEVE ANCHOR HEX NUT MS 6.5X35MM	BOX	100
M010004	SLEEVE ANCHOR HEX NUT MS 6.5X55MM	BOX	100
M010005	SLEEVE ANCHOR HEX NUT MS 6.5X75MM	BOX	100
M010006	SLEEVE ANCHOR HEX NUT MS 8.0X40MM	BOX	100
M010007	SLEEVE ANCHOR HEX NUT MS 8.0X65MM	BOX	50
M010008	SLEEVE ANCHOR HEX NUT MS 8.0X85MM	BOX	50
M010009	SLEEVE ANCHOR HEX NUT MS 10X40MM	BOX	50
M010010	SLEEVE ANCHOR HEX NUT MS 10X50MM	BOX	50
M010011	SLEEVE ANCHOR HEX NUT MS 10.0X60MM	BOX	50
M010012	SLEEVE ANCHOR HEX NUT MS 10.0X75MM	BOX	50
M010013	SLEEVE ANCHOR HEX NUT MS 10.0X95MM	BOX	50
M010015	SLEEVE ANCHOR HEX NUT MS 12.0X60MM	BOX	50
M010017	SLEEVE ANCHOR HEX NUT MS 12.0X100MM 25PK	BOX	25

POWERS ANCHORS SLEEVE COUNTERSUNK



- Carbon Steel Yellow Passivated
- Powers Sleeve Anchor Bolt
- CSK Head

Part No.	Description	Unit	Qty
M010076	SLEEVE ANCHOR C/SUNK HEAD 6.5 X 36MM	BOX	100
M010078	SLEEVE ANCHOR C/SUNK HEAD 6.5 X 75MM	BOX	100

POWERS ANCHORS WEDGE DROP-IN



- Carbon Steel Yellow Passivated
- Powers Wedge Anchor / Drop-In



Part No.	Description	Unit	Qty
M010168	WEDGE ANCHOR/DROP-IN M6 X 28MM	BOX	100
M010169	WEDGE ANCHOR/DROP-IN M8 X 30MM	BOX	100
M010170	WEDGE ANCHOR/DROP-IN M10 X 40MM	BOX	50
M010171	WEDGE ANCHOR/DROP-IN M12 X 57MM	BOX	50
M010172	WEDGE ANCHOR/DROP-IN M16 X 67MM PK25	BOX	25

POWERS ANCHORS ZIP-IT ZIP-IT METAL ANCHOR

Unit: BOX Qty: 100



Part No. M010495

- A one piece self drilling metal anchor designed for use in hollow gypsum wallboard for light to medium duty loads
- Designed to be used with No.8 screws in 3/8-1
- Available in metal or nylon supplied in packs of 25 or 100



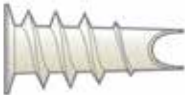
ZIP-IT NYLON ANCHOR

Unit: BOX Qty: 100



Part No. M010496

- A one piece self drilling metal anchor designed for use in hollow gypsum wallboard for light to medium duty loads
- Designed to be used with No.8 screws in 3/8-1
- Available in metal or nylon supplied in packs of 25 or 100



POWERS HANGERS SIDE



- Vertigo is a one-piece, all steel threaded fastening system for suspending steel threaded rod vertically overhead
- Suitable base materials: Structural steel and steel
- Zinc clear

Part No.	Description	Unit	Qty
M018096	STEEL SIDE HANGER 1/4 M6	BOX	100
M018100	SIDE HANGER 1/4 M10 (STEEL)	BOX	100
M018112	SIDE HANGER 1/4 M8 (STEEL)	BOX	100

CABLE MANAGEMENT AND FIXING

CONCRETE VERTICAL HANGER 6.5MM X 32MM

Unit: BOX Qty: 100



Part No. M018080

- VERTIGOT Vertical Hanger
- for CONCRETE
- M6 size



POWERS HANGERS VERTICAL

- VERTIGOT Vertical Hanger
- For Wood



Part No.	Description	Unit	Qty
M018040	VERTICAL HANGER 1/4 TYPE 17 M6 (WOOD)	BOX	100
M018060	VERTICAL HANGER 1/4 TYPE 17 M8 (WOOD)	BOX	100
M018125	VERTICAL HANGER 1/4 TYPE 17 M10 (WOOD)	BOX	100
M018044	VERTICAL HANGER 1/4 TYPE 17 M10 (WOOD)	BOX	100
M018084	VERTICAL HANGER 1/4 M10 (CONCRETE)	BOX	100
M018000	VERTICAL HANGER 1/4 M6 (STEEL)	BOX	100
M018008	VERTICAL HANGER 1/4 M10 (STEEL)	BOX	100
M018012	VERTICAL HANGER 1/4 50MM (STEEL)	BOX	250
M018024	VERTICAL HANGER 1/4 M8 (STEEL)	EA	1

POWERS VERTIGO HANGERS

VERTIGO CONCRETE SOCKET M6 (CONCRETE)

Unit: BOX Qty: 5



Part No. M017195

- Socket Driver
- For M6 Vertigo
- Concrete Use



VERTIGO CONCRETE SOCKET M10 (CONCRETE)

Unit: BOX Qty: 5



Part No. M017197

- Socket Driver
- For M6 Vertigo
- Concrete Use



POWERS BLUE TIP SCREW BOLTS HEX



- Zero expansion, one piece unit with hex head and completely removable
- Next generation mechanical anchor
- Manufactured from carbon steel



Part No.	Description	Unit	Qty
BT550	BLUE-TIP SCREWBOLT HEX HEAD 5X50MM	BOX	100
BT850	BLUE-TIP SCREWBOLT HEX HEAD 8X50MM	BOX	50
BT875	BLUE-TIP SCREWBOLT HEX HEAD 8X75MM	BOX	50
BT6530	BLUE-TIP SCREWBOLT HEX HEAD 6.5X30MM	BOX	100
BT6550	BLUE-TIP SCREWBOLT HEX HEAD 6.5X50MM	BOX	100
BT6575	BLUE-TIP SCREWBOLT HEX HEAD 6.5X75MM	BOX	50
BT8100	BLUE-TIP SCREWBOLT HEX HEAD 8X100MM	BOX	50
BT10100	BLUE-TIP SCREWBOLT HEX HEAD 10X100MM	BOX	50
BT65100	BLUE-TIP SCREWBOLT HEX HEAD 6.5X100MM	BOX	50
BTG875	BLUE-TIP SCREWBOLT HEX HEAD 8X75MM	BOX	50
M011726	BLUE-TIP SCREWBOLT HEX 10X60MM BT1060	BOX	50

POWERS SPIKE MUSHROOM



- The SPIKE Anchor is formed with an 's' shape at the working end of the anchor to create an expansion mechanism
- Creates spring type compression force against walls of hole
- Available in many sizes



Part No.	Description	Unit	Qty
M010549	SPIKE MUSH HEAD 5 X 38MM	BOX	100
M010552	SPIKE MUSH HEAD 6.5 X 38MM	BOX	100
M010553	SPIKE MUSH HEAD 6.5 X 50MM	BOX	100

POWERS SPIKE PIPE

PIPE SPIKE 6.5MM W/8MM INT. THREAD

Unit: BOX Qty: 100



Part No. M010573

- Designed for the suspension of threaded rod for HVAC and other services where suspended rod is required
- Carbon steel (zinc clear)
- For concrete, solid brick, solid block and grout filled block



POWERS SPIKE WIRE AND ROD



- Ceiling hangers for wire or rod
- Special design for suspending pipe
- Material: Carbon steel



Part No.	Description	Unit	Qty
M010583	TIE WIRE SPIKE 5MM	BOX	100
M010584	TIE WIRE SPIKE 6.5MM	BOX	100

CABLE MANAGEMENT AND FIXING

POWERS VERTIGO SOCKETS AND DRIVERS UNIVERSAL METAL/WOOD SOCKET

Unit: BOX Qty: 5



Part No. M017187

- VERTIGO Socket Driver
- Universal (metal/wood) socket
- Excluding M12 size

TWPSDRIVE DRIVER

Unit: EA Qty: 1



Part No. M017199

- VERTIGO Socket Driver
- TWPS Driver

WALLDOG 32MM ZINC 500 TUB PK500

Unit: EA Qty: 1



Part No. WALLDOG500

- Industry's first all steel one-piece screw with high profile threads
- Bulk pack of 500x 32mm Phillips screws
- Zinc

POWERS WALLDOG



- Industry's first all steel one-piece screw with high profile threads
- Easy fastening into wallboard and other masonry materials
- Leaves a much smaller hole than toggles or other systems

Part No.	Description	Unit	Qty
M015861	WALLDOG SCREW ANCHOR PHILLIPS 32MM	BOX	100
M015862	WALLDOG SCREW ANCHOR SQ DRIVE 32MM	BOX	100
M015863	WALLDOG SCREW ANCHOR SQ DRIVE 50MM	BOX	100
M015864	POWERS WALLDOG DOG BOX	EA	1

POWERS WEDGE NUTS



- Non-drilling anchor system
- For threaded rod hangers from BONDEK
- Suitable material: Steel

Part No.	Description	Unit	Qty
M010526	WEDGE NUT M8	BOX	100
M010527	WEDGE NUT M10	BOX	100

CONDUIT FLASHING

POWERS PURLIN CLIPS

PURLIN CLIP

Unit: BOX Qty: 100



Part No. M010522

- For steel purlin 1.6-2.5 thickness
- Zinc yellow
- Suitable for steel

AQUARIUS FLASHRITE



- Flexible, durable, dust, water, UV and air pollution resistant
- Bonded Aluminium support ring
- Torso provides strength and rigidity
- Flexible shoulder designed to relieve stress

Part No.	Description	Unit	Qty
P990051	FLASHRITE CONDUIT FLASHING BASE 75X75MM	EA	1
P990054	FLASHRITE CONDUIT FLASHING BASE 115X115	EA	1
P990057	FLASHRITE CONDUIT FLASHING BASE 155X155	EA	1

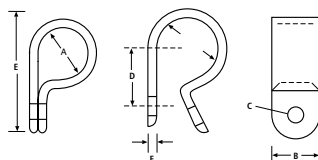
CABLE MANAGEMENT AND FIXING

CLIPS

CABAC P CLIPS BLACK



- An economical and secure way to mount cables and looms to just about anything
- Made from Nylon 66 - very durable
- Smooth edges to prevent cable damage
- Many sizes available for various cable diameters



Part No.	Max Cable Dia. A (mm)	Width B (mm)	Dimensions Mount C (mm)	D (mm)	E (mm)	F (mm)	Unit	Qty
PCBK-3	3.2	9.6	4.6	9.5	19.8	1.4	PAK	100
PCBK-5	4.8	9.6	4.6	10.5	19.8	1.4	PAK	100
PCBK-6	6.4	10	4.6	10	20	1.4	PAK	100
PCBK-8	7.9	10	4.6	12	22	1.5	PAK	100
PCBK-9	9.5	12	4.6	15.2	24	1.5	PAK	100
PCBK-12	12.7	12	4.6	15.2	31	1.5	PAK	50
PCBK-16	15.8	12	4.6	18.2	34.3	1.5	PAK	25
PCBK-20	19.4	12	4.6	18.2	35	1.5	PAK	25
PCBK-25	25.4	12	4.6	22	43	1.8	PAK	25

CABAC P CLIPS NATURAL



- An economical and secure way to mount cables and looms to just about anything
- Made from Nylon 66 - very durable
- Smooth edges to prevent cable damage
- Many sizes available for various cable diameters

Part No.	Max Cable Dia. A (mm)	Width B (mm)	Dimensions Mount C (mm)	D (mm)	E (mm)	F (mm)	Unit	Qty
PCN-3	3.2	9.6	4.6	9.5	19.8	1.4	PAK	100
PCN-5	4.8	9.6	4.6	10.5	19.8	1.4	PAK	100
PCN-6	6.4	10	4.6	10	20	1.4	PAK	100
PCN-8	7.9	10	4.6	12	22	1.5	PAK	100
PCN-9	9.05	12	4.6	15.2	24	1.5	PAK	100
PCN-12	12.7	12	4.6	15.2	31	1.5	PAK	50

CABLE MANAGEMENT AND FIXING

ECCO P CLIPS



- Holds cables in place. Fitted with a nail (suitable for nailing into wood)
- 38mm
- Six pieces in a row

Part No.	Description	Unit	Qty
M100001	ALUMINIUM PIN CLIPS SIZE 1	BOX	200
M100002	ALUMINIUM PIN CLIPS SIZE 2	BOX	200
M100003	ALUMINIUM PIN CLIPS SIZE 3	BOX	200
M100004	ALUMINIUM PIN CLIPS SIZE 4	BOX	200
M100005	ALUMINIUM PIN CLIPS SIZE 5	BOX	200
M100006	ALUMINIUM PIN CLIPS SIZE 6	BOX	200

ECCO SPRING CLIPS



- A fast and simple attachment for conduit and cables to metal eye beams
- Range of sizes available

Part No.	Description	Unit	Qty
SC8-13	SPRING CLIP 8MM-13MM	BAG	100
SC16-20	SPRING CLIP 16MM-20MM	BOX	100
SC25-32	SPRING CLIP 25MM-32MM	BOX	100

WALL PLUGS

CABAC WALL PLUGS



- Supplied in handy merchandiser pack of 100
- Screw length should equal the plug length plus fitting
- Select drill sizes from the table below
- When working with soft masonry please select a drill 1mm smaller

Part No.	Drill (mm)	Qty
WP25W	5	100
WP25R	6	100
WP25G	7	100
WP25G/1000	7	1000
WP25B	8	100

CABLE MANAGEMENT AND FIXING

ECCO WALL PLUGS



- Expansion plugs
- For light duty anchoring in concrete, stone, solid brick



Part No.	Drill (mm)	Qty
M019008		50
M019100		100

POWERS WALL PLUGS

SCORPION SELF ALIGNING WALL PLUG

Unit: BOX Qty: 100



Part No. M015860

- A proprietary plug that is ideal for low cost installation into plasterboard
- 50% more effective clamping force
- Unbreakable Nylon - does not shrink or loosen
- Non Corrosive



- Suitable for concrete, solid brick, solid block, aerated concrete block and grout filled block
- Material: Nylon
- Colour: Grey



Part No.	Description	Unit	Qty
M010388	NYLON PLUG GREY 6 X 30MM	BOX	200
M010391	NYLON PLUG GREY 10 X 50MM	BOX	50

FASTENERS

CABAC WAFER



- Phillips drive wafer head self drilling screws
- Available in 10 gauge only
- Packed in bags of 100

Part No.	Description	Unit	Qty
FRWH1022	WAFER HEAD 10GX22MM LENGTH	PAK	100
FRWH1022J	WAFER HEAD JAR 10GX22MM LENGTH	BOT	900
FRWH1030	WAFER HEAD 10GX30MM LENGTH	PAK	100

POWERS WAFER



- Needle Point Screws
- For fastening to timber or light gauge steel
- General purpose self drilling

Part No.	Description	Unit	Qty
M019024	WAFFER HEAD TEK SCREWS 10GX22 (100 PK)	PAK	100
M019025	WAFFER HEAD TEK SCREWS 10GX30 (100 PK)	PAK	100

CABAC BUGLE 7G



- Phillips drive bugle head drywall screws
- This size available in 7 gauge only
- Packed in bags of 100

Part No.	Description	Unit	Qty
FRBH720	BUGLE HEAD 7GX20MM LENGTH	PAK	100
FRBH725	BUGLE HEAD 7GX25MM LENGTH	PAK	100
FRBH730	BUGLE HEAD 7GX30MM LENGTH	PAK	100
FRBH735	BUGLE HEAD 7GX35MM LENGTH	PAK	100
FRBH745	BUGLE HEAD 7GX45MM LENGTH	PAK	100
FRBH750	BUGLE HEAD 7GX50MM LENGTH	PAK	100

CABAC BUGLE 8G



- Phillips drive bugle head drywall screws
- This size available in 8 gauge only
- Packed in bags of 100

Part No.	Description	Unit	Qty
FRBH850	BUGLE HEAD 8GX50MM LENGTH	PAK	100
FRBH863	BUGLE HEAD 8GX63MM LENGTH	PAK	100
FRBH875	BUGLE HEAD 8GX75MM LENGTH	PAK	100

CABLE MANAGEMENT AND FIXING

ECCO BUGLE NEEDLE 7G



- Bugle Head Needle Point Screws
- For fastening to timber or light gauge steel
- General purpose self drilling

Part No.	Description	Unit	Qty
M019012	BUGLE HEAD NEEDLE POINT 7GX20 (100 PK)	PAK	100
M019500	BUGLE HEAD NEEDLE 7GX20 - JAR	PAK	500
M019060	BUGLE HEAD NEEDLE POINT 7GX30 (100 PK)	PAK	100
M019502	BUGLE HEAD NEEDLE 7GX30	BOX	1000
M019000	BUGLE HEAD NEEDLE POINT 7GX35 (100 PK)	PAK	100
M019015	BUGLE HEAD NEEDLE POINT 7GX45 (100 PK)	PAK	100

ECCO BUGLE NEEDLE 8G

BUGLE HEAD NEEDLE POINT 8GX75 (100 PK)

Unit: PAK Qty: 100



Part No. M019017

- Bugle Head Needle Point Screws
- For fastening to timber or light gauge steel
- General purpose self drilling

CABAC PAN 6G



- Phillips drive bugle pan head drywall screws
- This size available in 6 gauge only
- Packed in bags of 100

Part No.	Description	Unit	Qty
FRPH620	PAN HEAD 6GX20MM LENGTH	PAK	100
FRPH630	PAN HEAD 6GX30MM LENGTH	PAK	100
FRPH650	PAN HEAD 6GX50MM LENGTH	PAK	100

CABAC PAN 7G



- Phillips drive bugle pan head drywall screws
- This size available in 6 gauge only
- Packed in bags of 100

Part No.	Description	Unit	Qty
FRPH712	PAN HEAD 7GX12MM LENGTH	PAK	100
FRPH720	PAN HEAD 7GX20MM LENGTH	PAK	100
FRPH720J	PAN HEAD 7GX20MM LENGTH JAR	BOT	1400
FRPH725	PAN HEAD 7GX25MM LENGTH	PAK	100
FRPH725J	PAN HEAD 7GX25MM LENGTH JAR	BOT	1000
FRPH730	PAN HEAD 7GX30MM LENGTH	PAK	100
FRPH740	PAN HEAD 7GX40MM LENGTH	PAK	100
FRPH750	PAN HEAD 7GX50MM LENGTH	PAK	100

POWERS PAN NEEDLE 7G

PAN HEAD NEEDLE POINT 6GX20 (100 PK)

Unit: PAK Qty: 100

Part No. M019018

- Pan Head Needle Point Screws
- For fastening to timber or light gauge steel
- General purpose self drilling



PAN HEAD NEEDLE PT 6GX20 - JAR

Unit: PAK Qty: 500

Part No. M019510

- Pan Head Needle Point Screws
- For fastening to timber or light gauge steel
- General purpose self drilling



PAN HEAD NEEDLE POINT 7GX20

Unit: PAK Qty: 100

Part No. M019020

- Pan Head Needle Point Screws
- For fastening to timber or light gauge steel
- General purpose self drilling



CABLE MANAGEMENT AND FIXING

PAN HEAD NEEDLE PT 7GX25 - JAR

Unit: BOX Qty: 400

Part No. M019515

- Pan Head Needle Point Screws
- For fastening to timber or light gauge steel
- General purpose self drilling



CABAC BUTTON SELF-DRILL 8G



- Phillips drive button head self drilling screws
- Available in 8 gauge only
- Packed in bags of 100

Part No.	Description	Unit	Qty
FRBHS812	SELF DRILL BUTTON 8GX12MM LENGTH	PAK	100
FRBHS825	SELF DRILL BUTTON 8GX25MM LENGTH	PAK	100
FRBHS832	SELF DRILL BUTTON 8GX32MM LENGTH	PAK	100

CABAC BUTTON DRYWALL 8G



- Phillips drive button head drywall screws
- Available in 8 gauge only
- Packed in bags of 100

Part No.	Description	Unit	Qty
FRBH815	DRYWALL BUTTON HEAD 8GX15MM LENGTH	PAK	100
FRBH815J	DRYWALL BUTTON HEAD 8GX15MM LENGTH JAR	BOT	1200
FRBH825	DRYWALL BUTTON HEAD 8GX25MM LENGTH	PAK	100
FRBH825J	DRYWALL BUTTON HEAD 8GX25MM LENGTH JAR	BOT	700
FRBH832	DRYWALL BUTTON HEAD 8GX32MM LENGTH	PAK	100
FRBH832J	DRYWALL BUTTON HEAD 8GX32MM LENGTH JAR	BOT	600

ECCO BUTTON



- Needle Point Screws
- For fastening to timber or light gauge steel
- General purpose self drilling

Part No.	Description	Unit	Qty
M019027	BUTTON HEAD TEK SCREWS 8GX25 (100 PK)	PAK	100
M019028	BUTTON HEAD TEK SCREWS 8GX32 (100 PK)	PAK	100

CABAC JACK CHAIN JACK CHAIN IN BUCKET 2.7MM X 30M

Unit: EA Qty: 1



Part No. JC2730

- Used to hang lights, cables, machine controls etc.
- Suitable for industrial and commercial applications
- Easy to connect and disconnect
- Zinc plated supplied in an easy to manage bucket

CABAC KITS BOX OF 14 ASSORTED SELF DRILLING SCREWS

Unit: EA Qty: 1



Part No. SCREWPAK

- Handy plastic TBORG plastic dispenser box
- Contains 100 each of the following popular screws:
- Button Teks, Pan Head, Bugle Head and Washer Head

POWERS WASHER NEEDLE

- Needle Point Screws
- For fastening to timber or light gauge steel
- General purpose self drilling



Part No.	Description	Unit	Qty
M019003	WASHER HEAD NEEDLE POINT 8GX15 (100 PK)	PAK	100
M019526	WASHER HEAD NEEDLE POINT 8GX25 - JAR	BAG	250
M019527	WASHER HEAD NEEDLE POINT 8GX32 - JAR	PAK	140

POWERS WASHER FW316 ZINC PLATED FLAT WASHER

Unit: EA Qty: 1

Part No. M011619

- Flat washer screw
- Yellow passivated
- Pack of 100



CABLE MANAGEMENT AND FIXING

POWERS NAIL-IN MUSHROOM



- Suitable for concrete, solid brick, solid block, and grout filled block
- Mushroom head
- Material: Nylon

Part No.	Description	Unit	Qty
M010430	NAIL-IN ANCHOR MUSH HEAD 5 X 25MM	BOX	100

ECCO NAIL-IN MUSHROOM



- Suitable for concrete, solid brick, solid block, and grout filled block
- Round head
- Material: Nylon

Part No.	Description	Unit	Qty
M011583	NAIL-IN ANCHOR MUSH HEAD 5.0 X 25	BOX	100
M011584	NAIL-IN ANCHOR MUSH HEAD 6.5 X 25	PAK	80
M011585	NAIL-IN ANCHOR MUSH HEAD 6.5 X 40	PAK	60
M011586	NAIL-IN ANCHOR MUSH HEAD HP	PAK	50

WIRE NUTS

CABAC WIRE NUTS

NUT FOR WIRE GREY 5 PCS 3*6MM2 MAX.

Unit: KIT Qty: 1



Part No. WNG

- Re-useable nuts suitable for solid and stranded wires
- Use for general purpose wiring and garden lights
- 5 x nuts per pack
- Various colours available accommodating many conductor sizes

NUT FOR WIRE BLUE 3 PCS 4*6MM2 MAX.

Unit: KIT Qty: 1



Part No. WNB

- Re-useable nuts suitable for solid and stranded wires
- Use for general purpose wiring and garden lights
- 10 x nuts per pack
- Various colours available accommodating many conductor sizes

CABLE MANAGEMENT AND FIXING

PLUG AND CORD

CABAC 2 PIN 7.5A



- 2 Pin 7.5 Amp ordinary duty cable
- Standard strip length is 65mm (outer) and 6mm (inner conductor)
- 5mm Earth Terminal when installed
- Colour: Black
- Length: 2M

Part No.	Amps	Colour	Length (m)	Pin	Variant	Unit	Qty
2P7.5BK2	7.5	Black	2	2	With ring terminal	EA	1
2P7.5WH2	7.5	White	2	2	With ring terminal	EA	1

CABAC 2 PIN 7.5A NT



- 2 Pin 7.5 Amp ordinary duty cable
- Standard strip length is 65mm (outer) and 6mm (inner conductor)
- 5mm Earth Terminal when installed
- Colour: Black
- Length: 2M

Part No.	Amps	Colour	Length (m)	Pin	Variant	Unit	Qty
2PF7.5BK2NT	7.5	Black	2	2	No ring terminal, flat cable	EA	1

CABAC 3 PIN 7.5A



- 3 Pin 7.5 Amp ordinary duty cable
- Standard strip length is 65mm (outer) and 6mm (inner conductor)
- 5mm Earth Terminal when installed
- Colour: Black
- Length: 2M

Part No.	Amps	Colour	Length (m)	Pin	Variant	Unit	Qty
3P7.5BK2	7.5	Black	2	3	With ring terminal	EA	1
3P7.5GY1.7	7.5	Grey	1.7	3	With ring terminal	EA	1
3P7.5GY2	7.5	Grey	2	3	With ring terminal	EA	1
3P7.5GY-3	7.5	Grey	3	3	With ring terminal	EA	1

CABAC 3 PIN 7.5A NT



- 3 Pin 7.5 Amp ordinary duty cable
- Standard strip length is 65mm (outer) and 6mm (inner conductor)
- 5mm Earth Terminal version also available
- Colour: Black
- Length: 2M

Part No.	Amps	Colour	Length (m)	Pin	Variant	Unit	Qty
3P7.5BK2NT	7.5	Black	2	3	No terminal	EA	1
3P7.5GY1.7NT	7.5	Grey	1.7	3	No ring terminal	EA	1
3P7.5GY2NT	7.5	Grey	2	3	No ring terminal	EA	1
3P7.5WH2NT	7.5	White	2	3	No ring terminal	EA	1

CABLE MANAGEMENT AND FIXING

CABAC 3 PIN 10A GREY BLP



- Three Pin plug and cord
- Lightweight, easy to carry and store
- BLP terminals - round Earth pin

Part No.	Amps	Colour	Length (m)	Pin	Variant	Unit	Qty
3P10GY1.7BLP	10	Grey	1.7	3	BLP terminals - Round Earth	EA	1
3P10BK2	10	Black	2	3	With ring terminal	EA	1
3P10BK3	10	Black	3	3	With ring terminal	EA	1
3P10GY1.7	10	Grey	1.7	3	With ring terminal	EA	1
3P10GY2	10	Grey	2	3	With ring terminal	EA	1
3P10GY3	10	Grey	3	3	With ring terminal	EA	1

CABAC 3 PIN 10A NT



- 3 Pin 10 Amp ordinary duty cable
- Standard strip length is 65mm (outer) and 6mm (inner conductor)
- 5mm Earth Terminal version also available
- Colour: Black
- Length: 2M

Part No.	Amps	Colour	Length (m)	Pin	Variant	Unit	Qty
3P10BK2NT	10	Black	2	3	No ring terminal	EA	1
3P10GY1.7NT	10	Grey	1.7	3	No ring terminal	EA	1
3P10GY2NT	10	Grey	2	3	No terminal	EA	1
3P10GY3NT	10	Grey	3	3	No ring terminal	EA	1

CABAC 3 PIN 15A NT



- 3 Pin 15 Amp ordinary duty cable
- Standard strip length is 65mm (outer) and 6mm (inner conductor)
- Colour: Black
- Length: 3M

Part No.	Amps	Colour	Length (m)	Pin	Variant	Unit	Qty
3P15BK3NT	15	Black	3	3	No ring terminal	EA	1
3P15GY3NT	15	Grey	3	3	No ring terminal	EA	1

CABAC Industrial Aerosol Range - Essential for Electricians.



*CABAC range of industrial sprays are standard items
in most toolboxes and utes.*

They are versatile, multi-purpose, and easy to use.

CLEANERS

CABAC CLEANERS

CABCHEM CONTACT CLEAN 350G

Unit: EA Qty: 1



Part No. CH115

- A blend of high performing inert cleaning solvents for use on all electronic precision equipment
- Cleans sensitive components
- Plastic safe, rapid evaporation and low toxicity
- Contains no CFCs or chlorinated solvents

CABCHEM CIRCUIT CLEANER 400G

Unit: EA Qty: 1



Part No. CH115

- A powerful mixture of solvents for heavy-duty cleaning and degreasing of electrical, mechanical and auto electrical equipment
- Harmless to plastics
- Removes oil, grease, dirt, grime and moisture

CABCHEM ELECTRO CLEANER 500G

Unit: EA Qty: 1



Part No. CH135

- A powerful mixture of solvents for heavy-duty cleaning and degreasing of electrical, mechanical and auto electrical equipment
- Non corrosive, non flammable, non conductive and residue free
- Removes oil, grease, wax, dirt, moisture and fats
- May affect some plastics and paints

ALCOHOL WIPES

ALCOHOL WIPES 100PACK

Unit: EA Qty: 1



Part No. 45WIPE

- Ideal for cleaning connector ends and bare fibre
- Pre-moistened wipes
- Moistened with isopropyl alcohol

LUBRICANTS

CABAC LUBRICANTS

CABCHEM CIRCUIT REVIVER 285G

Unit: EA Qty: 1



Part No. CH174

- An oil based cleaner that efficiently removes carbon, sulphide and oxide layers from all metallic contact surfaces
- Can also be used to remove contamination residue
- Inhibitors provide lubrication and corrosive protection

CHEMICALS AND ADHESIVES

CABCHEM SILICONE 1000 300G

Unit: EA Qty: 1



Part No. CH314

- A high quality electrical insulation compound with excellent water and moisture repellent properties
- Breakdown voltage 12kV/mm
- Universal lubrication for plastics and rubber
- Non-toxic and non-staining

CABCHEM 24/7 450G

Unit: EA Qty: 1



Part No. CH334

- A multi-functional formula which protects, lubricates and prevents electrical failure
- Protects in conditions like moisture, corrosion, dirt and more
- Cleans and lubricates precision parts
- Penetrates rusted and frozen parts

CABCHEM BLUE LUBE 1LTR

Unit: KAR Qty: 6



Part No. CH377

- A versatile blend of lubricants, wetting agents and bactericides specially formulated to ease cables through conduits
- Ideal for horizontal and vertical pulls
- Compatible with all common cable types

CABCHEM BLUE LUBE BULK 20LTR

Unit: EA Qty: 1



Part No. CH377L20

- A versatile blend of lubricants, wetting agents and bactericides specially formulated to ease cables through conduits
- Ideal for horizontal and vertical pulls
- Compatible with all cable types

CABCHEM ZINC 390G

Unit: EA Qty: 1



Part No. CH533

- A 99% epoxy based zinc rich coating used to inhibit rust and corrosion of metal surfaces
- Electrochemically bonds to metal
- Provides active galvanic protection

IDEAL LUBRICANTS

CLEARGLIDE WIRE PULLING LUBRICANT

Unit: EA Qty: 1



Part No. 31-388

- A clear and colourless lubricant to assist in pulling electrical conductors into conduit electrical installations
- Quick and easy to clean
- Dries to a semi-fluid film that will not clog

ADHESIVES

POWERS ADHESIVES

GLUG-PLUG FAST CURE SOLVENT FREE POLYURE

Unit: EA Qty: 1



Part No. GLUG-PLUG

- The ultimate all-in-1 fixer
- Fast curing liquid plug for light-duty fastening and anchoring
- Polyurethane based solvent free injection compound
- Expands in the hole and cures quickly

SEALANTS

SEALANTS

SILJ-RG SILICONE SEALANT - ROOF & PLUMBI

Unit: EA Qty: 1



Part No. P992800

- Sealant for internal & external, multipurpose, weather and waterproof applications.
- Neutral cure & potable water approved
- Waterproof & UV resistant
- High flexibility
- 300g tube

SILJ-KB SILICONE SEALANT - SANITARY & GL

Unit: EA Qty: 1



Part No. P992801

- Used for sealing around doors and windows, sealing glass to glass and glass to Aluminum
- Waterproofing/anti-mildew sealing around sanitary ware, sinks etc
- Fast, Acetoxy cure.
- Mould resistant
- 300g tube

SILJ-ES SILICONE SEALANT- ALL PURP ELEC

Unit: EA Qty: 1



Part No. P992804

- Used for the sealing of glass, aluminium panel curtain walls, metal, concrete, brick, glass skylights, roofing and guttering and more
- Many other constructional and industrial uses
- Neutral cure & mould resistant
- Waterproof & weatherproof
- 300g tube

CHEMICALS AND ADHESIVES

TRIGGERFOAM 750ML

Unit: EA Qty: 1



Part No. M010691

- Expanding foam that sets to the current shape
- Excellent application qualities to many surface types
- 750ml

FIRE POWER FIRE RATED FOAM 750ML CAN

Unit: EA Qty: 1



Part No. M010695

- CFC free propellant
- Single component and self-expanding
- Ready to use
- Fire rated up to 360 mins in certain configurations

PESTICIDES

GENERIC BRAND PESTICIDES

WASP & NEST DESTROYER (DG)

Unit: EA Qty: 1



Part No. P994102

- Extremely potent pesticide to kill wasps and their nests
- Light weight aerosol can with a 4 metre spray
- Stable solution with a long shelf life
- Ergonomic trigger requires medium pressure only

GENERAL ELECTRICAL

INDEX

GN12.....	5	A2-63.....	10	CT200MH/NT	19
GN16.....	5	A2-75S	10	CT365MH/NT	19
GN20.....	5	A2-75.....	10	CT200PM/NT.....	20
GN25.....	5	A2-90.....	10	CT98ID/100	20
GN32.....	5	A2-100.....	10	CT200ID/NT	20
GN40.....	5	A2-110.....	10	CTMP	20
GN50.....	5	CW20/16	11	CT98BL/100	21
GN63.....	5	CW20S	11	CT98GR/100	21
GN16-NW	5	CW20.....	11	CT98OR/100	21
GN20-NW	5	CW25.....	11	CT98RD/100	21
GN25-NW	5	CW32.....	11	CT98YL/100	21
GN32-NW	5	CW40.....	11	CT140BL/100	21
GN40-NW	5	CW50S	11	CT140GR/100	21
GN50-NW	5	CW50.....	11	CT140OR/100	21
GN63-NW	5	CW63S	11	CT140RD/100	21
GN12S.....	5	CW63.....	11	CT140YL/100	21
GN16S.....	5	C4901M12EX	12	CT200BL/100	21
GN20S.....	5	C4901M16EX	12	CT200GR/100	21
GN25S.....	5	C4901M20EX	12	CT200OR/100	21
GN32S.....	5	C4901M25EX	12	CT200RD/100	21
GN40S.....	5	C4901M32EX	12	CT200YL/100	21
GN50S.....	5	C4901M40EX	12	CT290BL/100	21
GN63S.....	5	C4901M50EX	12	CT290GR/100	21
GN9PG	6	C4901M63EX	12	CT290OR/100	21
GN11PG	6	C5900M12NEX	12	CT290RD/100	21
GN13.5PG.....	6	C5900M16NEX	12	CT290YL/100	21
GN16PG	6	C5900M20NEX	12	TIEPAKBK	21
GN21PG	6	C5900M25NEX	12	CT100MT-BK-LD	22
GU12.....	7	C5900M32NEX	12	CT140MT-BK-LD	22
GU16.....	7	C5900M40NEX	12	CT290MT-BK-LD	22
GU20.....	7	C5900M50NEX	12	CT200MT-BK	22
GU25.....	7	C5900M63NEX	12	CT290MT-BK	22
GU32.....	7	LNN9PG	13	CT360MT-BK	22
GU40.....	7	LNN11PG	13	CT360MT-BK-HD	22
GU50.....	7	LNN13.5PG.....	13	CT100MT-NT-LD.....	22
GU63.....	7	LNN16PG	13	CT140MT-NT-LD.....	22
GU9PG	7	LNN21PG	13	CT290MT-NT-LD.....	22
GU11PG	7	LNM12.....	13	CT200MT-NT.....	22
GU13.5PG.....	7	LNM16.....	13	CT290MT-NT.....	22
GU16PG	7	LNM20.....	13	CT360MT-NT.....	22
GU21PG	7	LNM25.....	13	CT360MT-NT-HD.....	22
GU12EMC/L	9	LNM32.....	13	CT98DT-100	23
GU16EMC/L	9	LNM40.....	13	CT200DT-100	23
GU20EMC/L	9	LNM50.....	13	CT360DT-100	23
GU25EMC/L	9	LNM63.....	13	CT360DT-HD.....	23
GU32EMC/L	9	LNM9PG	13	SAM12.7BK	23
GU40EMC/L	9	LNM11PG	13	SAM12.7BK/K.....	23
GU50EMC/L	9	LNM13.5PG.....	13	SAM19BK	23
GU63EMC/L	9	LNM16PG	13	SAM19BK/K	23
A2-20/16	10	LNM21PG	13	SAM25BK	23
A2-20S	10	LNM12EMC.....	14	SAM25BK/K	23
A2-20.....	10	LNM16EMC.....	14	SAM12.7NT	24
A2-25.....	10	LNM20EMC.....	14	SAM12.7NT/K.....	24
A2-32.....	10	LNM25EMC.....	14	SAM19NT	24
A2-40.....	10	LNM32EMC.....	14	SAM19NT/K	24
A2-50S	10	LNM40EMC.....	14	SAM25NT	24
A2-50.....	10	LNM50EMC.....	14	SAM25NT/K	24
A2-63S	10	LNM63EMC.....	14	CTB5BK	24

ET16	14	CTB9BK	24	EPBS10.....	30
ET20	14	CTB5NT	24	EPBS15.....	30
ET25	14	CTB9NT	24	EPBS20.....	30
ET32	14	CH5	25	EPBS25.....	30
ET40	14	CH8	25	EPBS30.....	30
ET50	14	CH9	25	EPBS40.....	30
ET63	14	LOX01B.....	25	EPBS50.....	30
SH1	14	CTPM1/NT.....	25	EPBS4/K.....	30
SH2	14	VT10BK/5M.....	25	EPBS6/K.....	30
SH3	14	VT10BK/10M.....	25	EPBS10/K.....	30
SH4	14	VT12BK/50M.....	25	EPBS15/K.....	30
SH5	14	VT15BK/5M.....	25	EPBS20/K.....	30
SH6	14	VT15BK/10M.....	25	EPBS25/K.....	30
SH7	14	VT19BK/25M.....	25	EPBS30/K.....	30
CT196NT-LD.....	16	VT25BK-25M.....	25	CABSTRAP9.5.....	31
CT196BK-LD.....	16	VT10BL/5M.....	26	CABSTRAP12.7.....	31
CT98BK/100	17	VT10BL/10M.....	26	CABSTRAP15.8.....	31
CT98BK/1000	17	VT15BL/5M.....	26	CABSTRAP19.0.....	31
CT140BK/100	17	VT15BL/10M.....	26	CABBUCKLE9.5.....	31
CT140BK/1000	17	VTIEBL2-X	26	CABBUCKLE12.7.....	31
CT200BK/100	17	VTIEBL3-X	26	CABBUCKLE15.8.....	31
CT200BK/1000	17	SST200/316.....	27	CABBUCKLE19.0.....	31
CT250BK.....	17	SST360/316.....	27	SB3BK	32
CT250BK/1000	17	SST520/316.....	27	SBK3BK	32
CT290BK.....	17	SST680/316.....	27	SB6BK	32
CT290BK/1000	17	SST200-HD/316	27	SBK6BK	32
CT360BK.....	17	SST360-HD/316	27	SB6BK-400.....	32
CT430BK.....	17	SST520-HD/316	27	SB12BK	32
CT98NT/100	17	SST680-HD/316	27	SBK12BK	32
CT98NT/1000	17	SST838-HD/316	27	SB12BK-150.....	32
CT140NT/100	17	SST1000-HD/316	27	SB16BK	32
CT140NT/1000	17	SST1500-HD/316	27	SBK16BK	32
CT200NT/100	17	SST200-316S	27	SBK20BK	32
CT200NT/1000	17	SST360-316S	27	SB20BK	32
CT250NT.....	17	SST520-316S	27	CABSTRAPTOOL2	32
CT250NT/1000	17	SST680-316S	27	CABSTRAPTOOL	32
CT290NT.....	17	SST200-HD-316S.....	28	SB3NT.....	33
CT290NT/1000	17	SST360-HD-316S.....	28	SBK6NT	33
CT360NT.....	17	SST520-HD-316S.....	28	SB6NT.....	33
CT203BK-HD	18	SST680-HD-316S.....	28	SB6NT-400	33
CT365BK-HD	18	SST838-HD-316S.....	28	SBK12NT	33
CT540BK-HD	18	SST1000-HD-316S.....	28	SB12NT.....	33
CT710BK-HD	18	SST1500-HD-316S.....	28	SB12NT-150	33
CT1220BK-HD	18	M201490	28	SBK16NT	33
CT1530BK-HD	18	M201505	28	SB16NT.....	33
CT203NT-HD.....	18	STFC200-316	28	SBK20NT	33
CT365NT-HD.....	18	STFC360-316	28	SB20NT.....	33
CT710NT-HD.....	18	STFC200-HD-316	29	SBK3NT	33
CT838NT-HD.....	18	STFC360-HD-316	29	LT7	33
CT500BK-UHD	19	STFC200-316S	29	LT7/400	33
CT500BK-UHD/100.....	19	STFC360-316S	29	LT10	33
CT600BK-UHD	19	STFC200-HD-316S.....	29	LT10/250	33
CTR140BK	19	STFC360-HD-316S.....	29	LT13	33
CTR200BK	19	STFC520-HD-316S.....	29	LT13/150	33
CTR290BK	19	STFC680-HD-316S.....	29	LT16	33
CTR365BK-HD	19	SSCHD	29	LT16/100	33
CTR500NT	19	EPBS4.....	30	LT20	33
CT140MH/NT	19	EPBS6.....	30	LT20/100	33

GENERAL ELECTRICAL

LT25	33	RGM32	36	M010005	42
LT25/50	33	RGM50	36	M010006	42
LT36	33	SRBTOOL	36	M010007	42
LT48	33	M050012	37	M010008	42
EW16BK/K	33	M050016	37	M010009	42
EW20BK/K	33	M050020	37	M010010	42
EW20BK	33	M050025	37	M010011	42
GS1.5	34	M050032	37	M010012	42
GS1.5R	34	M050040	37	M010013	42
GS2.5	34	M050050	37	M010015	42
GS2.5R	34	M051016	37	M010017	42
GS3.5R	34	M051020	37	M010076	42
GS5	34	M051025	37	M010078	42
GS5R	34	M051032	37	M011614	42
GS7	34	M051040	37	M010168	43
GS7R	34	M051050	37	M010169	43
GS10	34	M010489	37	M010170	43
GS10R	34	M010485	38	M010171	43
GS12	34	M010484	38	M010172	43
GS12R	34	M010482	38	M018096	43
NSB8	34	M014484	38	M018100	43
NSB10	34	M010493	38	M018112	43
NSB13	34	M011589	38	M010495	43
NSB16	34	M010501	38	M010496	43
NSB19	34	M010472	39	M018040	44
NSB22	34	M010473	39	M018060	44
NSB25	34	M010474	39	M018125	44
NSB30	34	M010475	39	M018044	44
NSB38	34	M010476	39	M018084	44
NSB45	34	M010477	39	M018000	44
NSB50	34	M010478	39	M018008	44
SNSB10	35	M010479	39	M018012	44
SNSB13	35	HWAST-100	39	M018024	44
SNSB16	35	M010152	39	M018080	44
SNSB19	35	M011588	39	M017195	44
SNSB22	35	M010461	40	M017197	44
SNSB25	35	M010463	40	BT550	45
NP8	35	M010425	40	BT850	45
NP10	35	M010426	40	BT875	45
NP13	35	M010427	40	BT6530	45
NP16	35	M010428	40	BT6550	45
NP19	35	M014427	40	BT6575	45
NP22	35	M014428	40	BT8100	45
NP25	35	M010435	40	BT10100	45
NP30	35	M011623	40	BT65100	45
NP45	35	M010039	41	BTG875	45
SRB6N-4	35	M010042	41	M011726	45
SRB5P-4	35	M010043	41	M010549	45
FG1	36	M010044	41	M010552	45
FG1.6	36	M010045	41	M010553	45
FG2.4	36	M010047	41	M010583	45
FG3.2	36	M010048	41	M010584	45
FG4.5	36	M010089	41	M010573	45
RGM6	36	M010088	41	M015861	46
RGM7	36	M010087	41	M015862	46
RGM10	36	M010001	42	M015863	46
RGM20	36	M010003	42	M015864	46
RGM25	36	M010004	42	M017187	46

M017199	46	M019060	52	3P10GY1.7	58
WALLDOG500	46	M019502	52	3P10GY2	58
M010526	47	M019000	52	3P10GY3	58
M010527	47	M019015	52	3P10BK2NT	58
P990051	47	FRPH620	52	3P10GY1.7NT	58
P990054	47	FRPH630	52	3P10GY2NT	58
P990057	47	FRPH650	52	3P10GY3NT	58
M010522	47	M019017	52	3P15BK3NT	58
PCBK-3	48	FRPH712	53	3P15GY3NT	58
PCBK-5	48	FRPH720	53	CH115	60
PCBK-6	48	FRPH720J	53	CH135	60
PCBK-8	48	FRPH725	53	CH125	60
PCBK-9	48	FRPH725J	53	45WIPE	60
PCBK-12	48	FRPH730	53	CH174	60
PCBK-16	48	FRPH740	53	CH314	61
PCBK-20	48	FRPH750	53	CH334	61
PCBK-25	48	M019018	53	CH377	61
PCN-3	48	M019510	53	CH377L20	61
PCN-5	48	M019020	53	CH533	61
PCN-6	48	FRBHS812	54	31-388	62
PCN-8	48	FRBHS825	54	GLUG-PLUG	62
PCN-9	48	FRBHS832	54	P992800	62
PCN-12	48	FRBH815	54	P992801	62
M100001	49	FRBH815J	54	P992804	62
M100002	49	FRBH825	54	M010691	63
M100003	49	FRBH825J	54	M010695	63
M100004	49	FRBH832	54	P994102	63
M100005	49	FRBH832J	54		
M100006	49	M019027	54		
SC8-13	49	M019028	54		
SC16-20	49	M019515	54		
SC25-32	49	M019003	55		
WP25W	49	M019526	55		
WP25R	49	M019527	55		
WP25G	49	JC2730	55		
WP25G/1000	49	SCREWPAK	55		
WP25B	49	M011619	55		
M019008	50	M010430	56		
M019100	50	M011583	56		
M010388	50	M011584	56		
M010391	50	M011585	56		
FRWH1022	50	M011586	56		
FRWH1022J	50	WNG	56		
FRWH1030	50	WNB	56		
M015860	50	2P7.5BK2	57		
M019024	51	2P7.5WH2	57		
M019025	51	2PF7.5BK2NT	57		
FRBH720	51	3P7.5BK2	57		
FRBH725	51	3P7.5GY1.7	57		
FRBH730	51	3P7.5GY2	57		
FRBH735	51	3P7.5GY-3	57		
FRBH745	51	3P7.5BK2NT	57		
FRBH750	51	3P7.5GY1.7NT	57		
FRBH850	51	3P7.5GY2NT	57		
FRBH863	51	3P7.5WH2NT	57		
FRBH875	51	3P10GY1.7BLP	58		
M019012	52	3P10BK2	58		
M019500	52	3P10BK3	58		



In support of our policy of continuous product improvement we reserve the right to change materials and specifications without notice. Drawings, where used, are not to scale. All dimensions are in millimetres and sizes given are approximate. Where possible, technical MSDS data sheets are made available on the website. All products should be installed and used in accordance with manufacturer's instructions provided. Warning: products may be the subject of registered designs and patents. Refer to website for terms and conditions on warranty.

Every effort has been made to ensure accuracy of content. However no liability will be met by CABAC or its suppliers for any errors or omissions.
Product data and information is not binding.

All brands and logos are registered trademarks and are subject to copyright laws.

No part of this catalogue can be reproduced without consent of CABAC.