
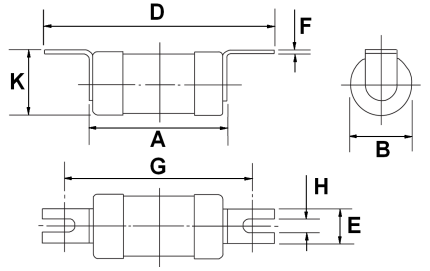





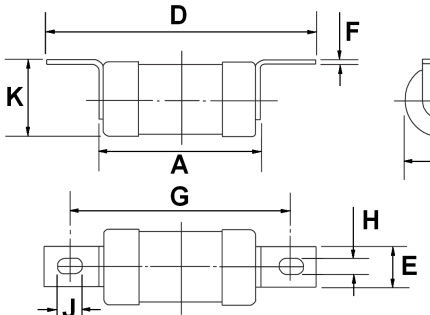
Spec Sheet: T-Type Fuse Links – 660V

Type	Off set tags	Current (A)	Catalogue Number	A	B	D	E	F	G	H	K
	(2 hole fixing)	2A	NIT2	36.5	13.9	55.6	11.1	0.8	44.5	4.7	14.3
		4A	NIT4								
		6A	NIT6								
		10A	NIT10								
		16A	NIT16								
		20A	NIT20								
		25A	NIT25								
		32A	NIT32								
		25A	NIT20M25								
		32A	NIT20M32								



Dimensions in mm

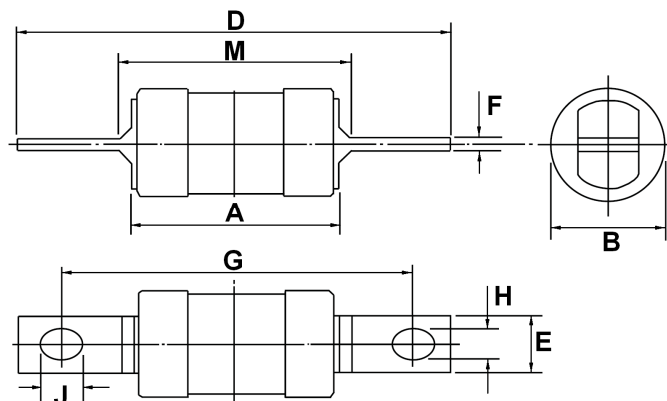
Type	Off set tags	Current (A)	Catalogue Number	A	B	D	E	F	G	H	J	K
	(2 hole fixing)	2A	TIA2	56.4	22.2	85.8	8.7	1.2	73.0	5.2	8.1	23.8
		4A	TIA4									
		6A	TIA6									
		10A	TIA10									
		16A	TIA16									
		20A	TIA20									
		25A	TIA25									
		32A	TIA32									
		25A	TIA25									
		32A	TIA32									
		32M35	TIA32M35									
		32M40	TIA32M40									
		32M50	TIA32M50									
		32M63	TIA32M63									
TIS 35-100A		35	TIS35	56.4	22.2	85.8	8.7	1.2	73.0	5.2	8.1	23.8
		40	TIS40									
		50	TIS50									
		63	TIS63									
		63M80	TIS63M80									
		63M100	TIS63M100	58.0	26.2	90.5	12.7	1.2	73.0	5.2	7.5	27.8
TCP 80-200A		80	TCP80	58.8	26.2	111.0	19.1	2.4	93.7	8.7	11.9	27.5
		100	TCP100									
		100M125	TCP100M125	70.0	33.7	111.0	19.1	2.4	93.7	8.7	11.9	34.9
		100M160	TCP100M160									
		100M200	TCP100M200									
TFP 125-315A		125	TFP125	70.0	33.7	111.0	19.1	2.4	93.7	8.7	11.9	34.9
		160	TFP160									
		200	TFP200									


Dimensions in mm

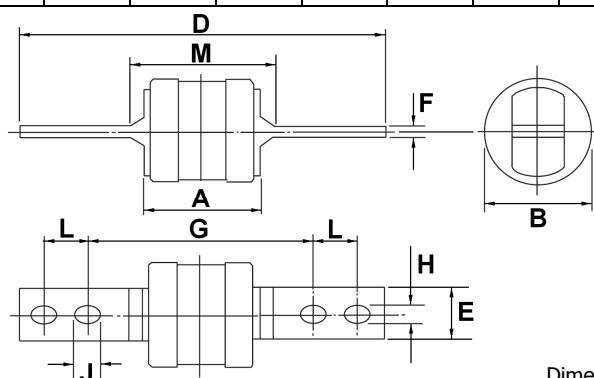


Type	Centre tags	Current (A)	Catalogue Number	A	B	D	E	F	G	H	J	M
(2 hole fixing)		2A	TB2	58.0	26.2	111.9	12.7	1.6	97.0	7.1	10.3	61.9
		4A	TB4									
		6A	TB6									
		10A	TB10									
		16A	TB16									
		20A	TB20									
		25A	TB25									
		32A	TB32									
		35A	TB35									
		40A	TB40									
		50A	TB50									
		63A	TB63									
		Dimensions in mm										
		2A	TBC2	58.0	26.2	128.7	14.3	1.6	111.0	8.7	11.9	61.9
		4A	TBC4									
		6A	TBC6									
		10A	TBC10									
		16A	TBC16									
		20A	TBC20									
		25A	TBC25									
		32A	TBC32									
		35A	TBC35									
		40A	TBC40									
		50A	TBC50									
		63A	TBC63									
		Dimensions in mm										
		80A	TC80	58.8	26.2	136.5	19.1	3.25	111.0	8.7	11.9	58.8
		100A	TC100									
		125A	TF125									
		160A	TF160	70.0	33.7	136.5	19.1	3.2	111.0	8.7	11.9	79.4
		200A	TF200									
		200M250	TF200M250									
		200M315	TF200M315	77.0	40.0	136.5	19.1	3.2	111.0	8.7	11.9	79.4
		250A	TKF250									
		315A	TKF315	77.0	52.6	136.5	25.4	3.2	111.0	8.7	11.9	82.0
		315M355	TKF315M355									
		355A	TMF355									
		400A	TMF400	83.0	60.0	136.5	25.4	6.3	111.0	8.7	11.9	85.8
		400M450	TMF400M450									
		355A	TKM355	77.0	52.6	160.2	25.4	3.2	133.0	10.3	13.5	82.0
		400A	TKM400									




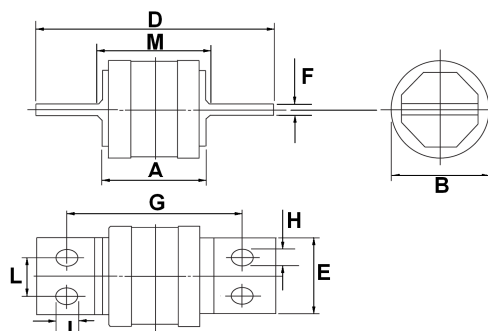


Type	Centre tags	Current (A)	Catalogue Number	A	B	D	E	F	G	H	J	L	M
	(4 hole fixing)	355A	TM355	83.0	61.1	211.0	25.4	6.3	133.0	10.3	11.9	25.4	95.0
		400A	TM400										
		400M450	TM400M450										
		450A	TTM450	81.8	76.2	209.6	25.4	6.3	133.0	10.3	11.9	25.4	95.0
		500A	TTM500										
		560A	TTM560										
		630A	TTM630	88.1	82.5	209.6	25.4	9.5	133.0	10.3	15.1	25.4	100.1
		670A	TLM670										
		710A	TLM710										
		750A	TLM750	83.0	61.1	255.4	25.4	6.3	165.0	10.3	13.5	31.8	95.0
		800A	TLM800										
		355A	TMT355										
		400A	TMT400	81.8	76.2	266.7	38.1	6.3	165.0	10.3	15.1	31.8	108.0
		450A	TT450										
		500A	TT500										
		630A	TT630	88.1	82.5	266.7	38.1	7.8	165.0	10.3	15.1	31.8	114.3
		670A	TLT670										
		710A	TLT710										
		750A	TLT750	88.1	82.5	266.7	38.1	7.8	165.0	10.3	15.1	31.8	114.3
		800A	TLT800										



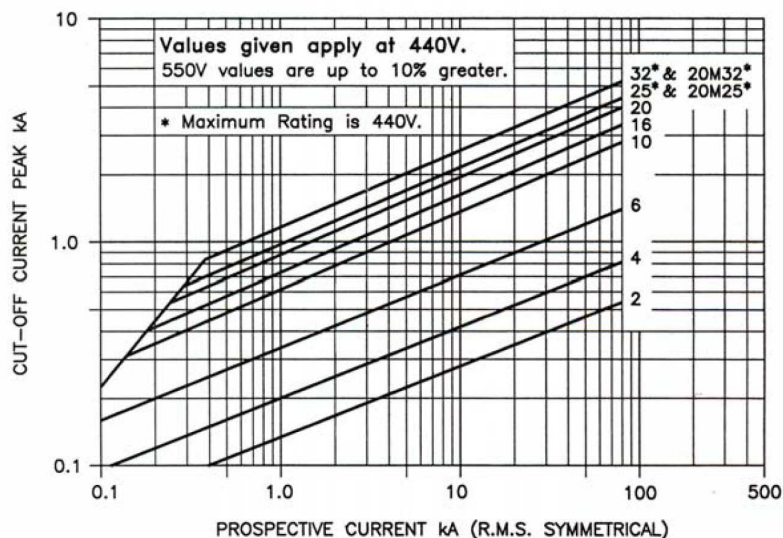
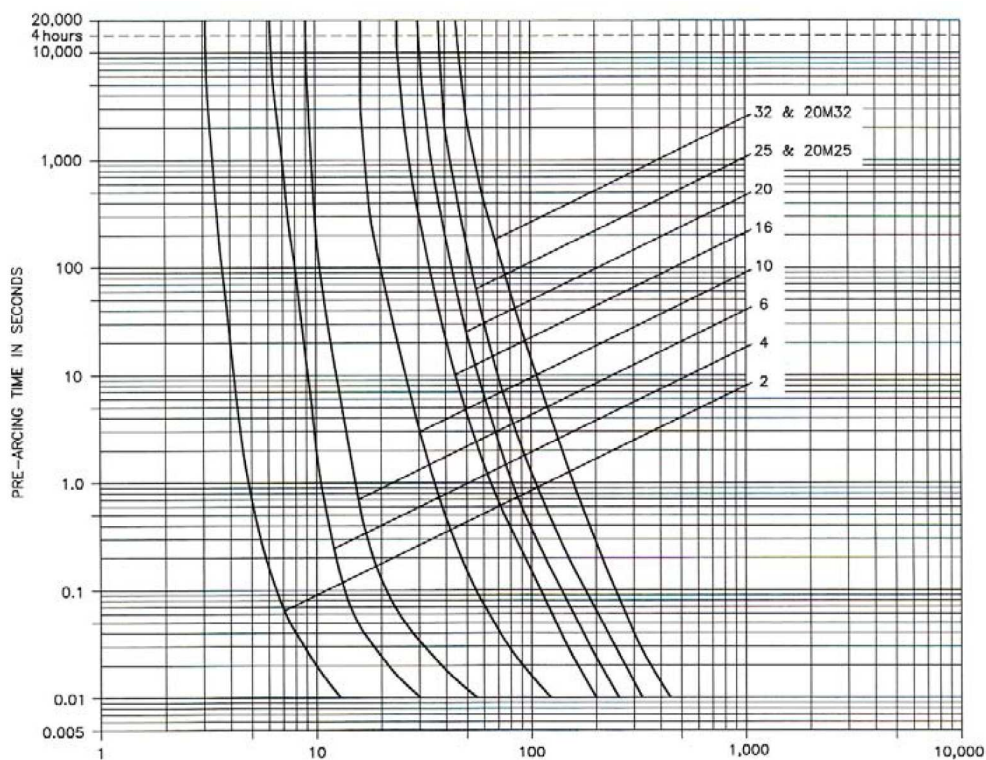
Dimensions in mm

Type	Centre tags	Current (A)	Catalogue Number	A	B	D	E	F	G	H	J	L	M
	(4 hole fixing)	560A	TLU560	90.5	83.3	200.0	63.5	9.5	149.0	13.5	15.9	31.8	101.6
		630A	TLU630										
		670A	TLU670										
		710A	TLU710										
		750A	TLU750	88.9	99.5	200.0	63.5	9.5	149.0	13.5	16.7	31.8	95.0
		800A	TLU800										
		1000A	TXU1000										
		1250A	TXU1250										



Type NIT Performance Data 2 – 32A

Current Rating (A)	Pre-Arc $I^2 t$ ($A^2 \text{ sec}$)	Total $I^2 t$ ($A^2 \text{ sec}$) @ 415V	Total $I^2 t$ ($A^2 \text{ sec}$) @ 440V	Total $I^2 t$ ($A^2 \text{ sec}$) @ 550V	Watts Loss (W)	Voltage (AC)	Breaking Capacity (AC)	Voltage (DC)	Breaking Capacity (DC)
2	2.2	9.5	10	15	1.6	550V	80kA	250V	40kA
4	7.2	30	33	50	1.6				
6	22	92	100	150	0.7				
10	170	650	700	1,000	0.9				
16	200	800	950	1,350	1.6				
20	360	1,200	1,500	2,200	1.8				
25	650	2,500	2,900	-	2.0				
32	600	3,500	4,050	-	2.9	440V	-	-	-
20M25	650	2,500	2,900	-	1.3				
20M32	600	3,500	4,050	-	1.1				

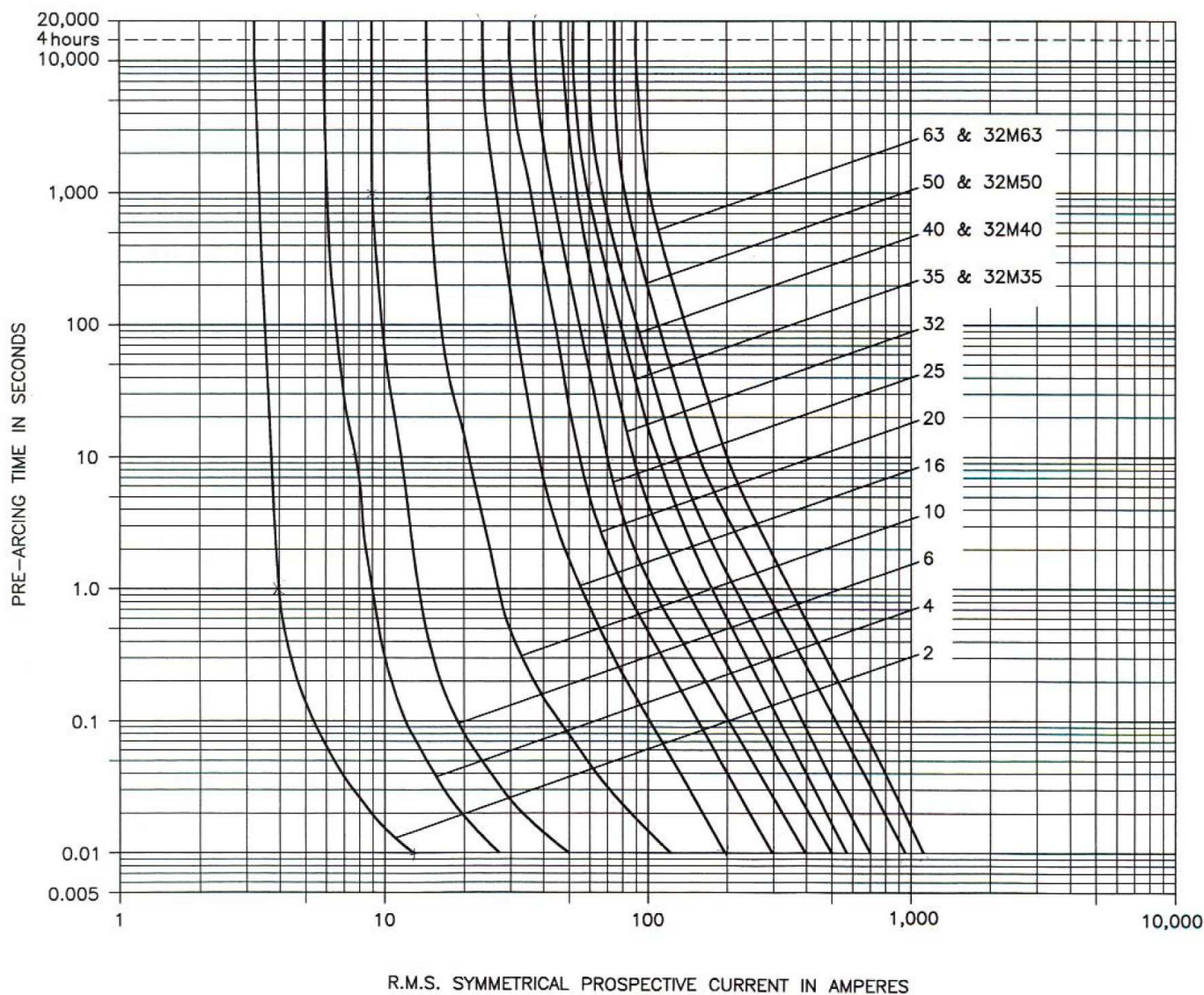


R.M.S. SYMMETRICAL PROSPECTIVE CURRENT IN AMPERES



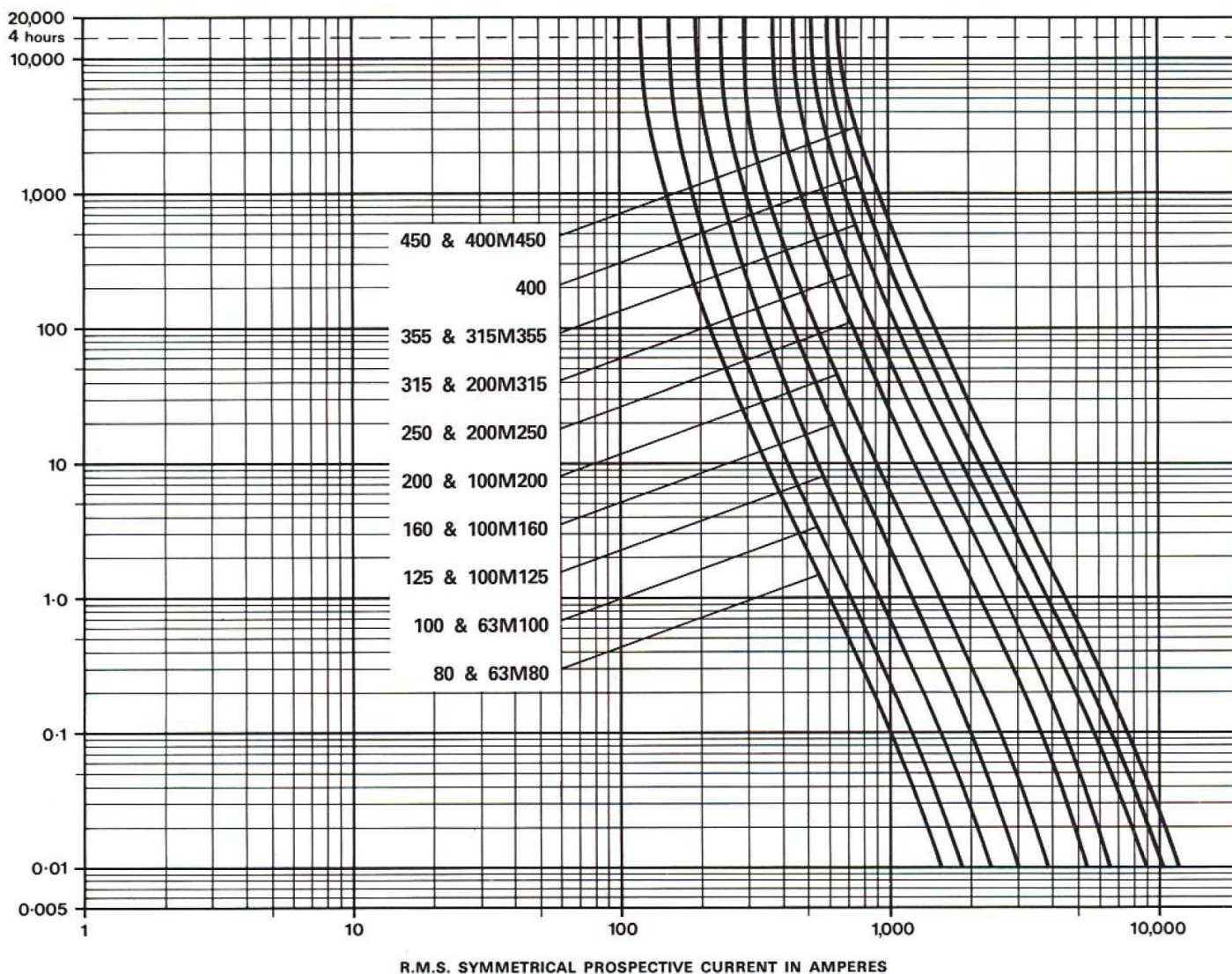
Type T Performance Data 2 – 63A

Current Rating (A)	Pre-Arc $I^2 t$ (A ² sec)	Total $I^2 t$ (A ² sec) @ 415V	Total $I^2 t$ (A ² sec) @ 550V	Total $I^2 t$ (A ² sec) @ 660V	Watts Loss (W)	Voltage (AC)	Breaking Capacity (AC)	Voltage (DC)	Breaking Capacity (DC)
2	2	7	11	15	0.8	660V	80kA	460V	40kA
4	7	24	35	50	1.1				
6	22	73	110	150	1.0				
10	170	500	720	1000	1.2				
16	150	560	790	1,100	2.4				
20	300	930	1,270	1,670	2.4				
25	500	1,730	2,500	3,400	3.7				
32	1,080	3,200	4,500	5,900	4.2				
35, M35	1,380	4,100	5,200	6,500	3.6				
40, M40	1,920	5,200	5,750	8,380	3.8				
50, M50	3,410	8,000	10,100	13,260	4.8				
63, M63	6,500	17,000	21,000	25,000	6.5				



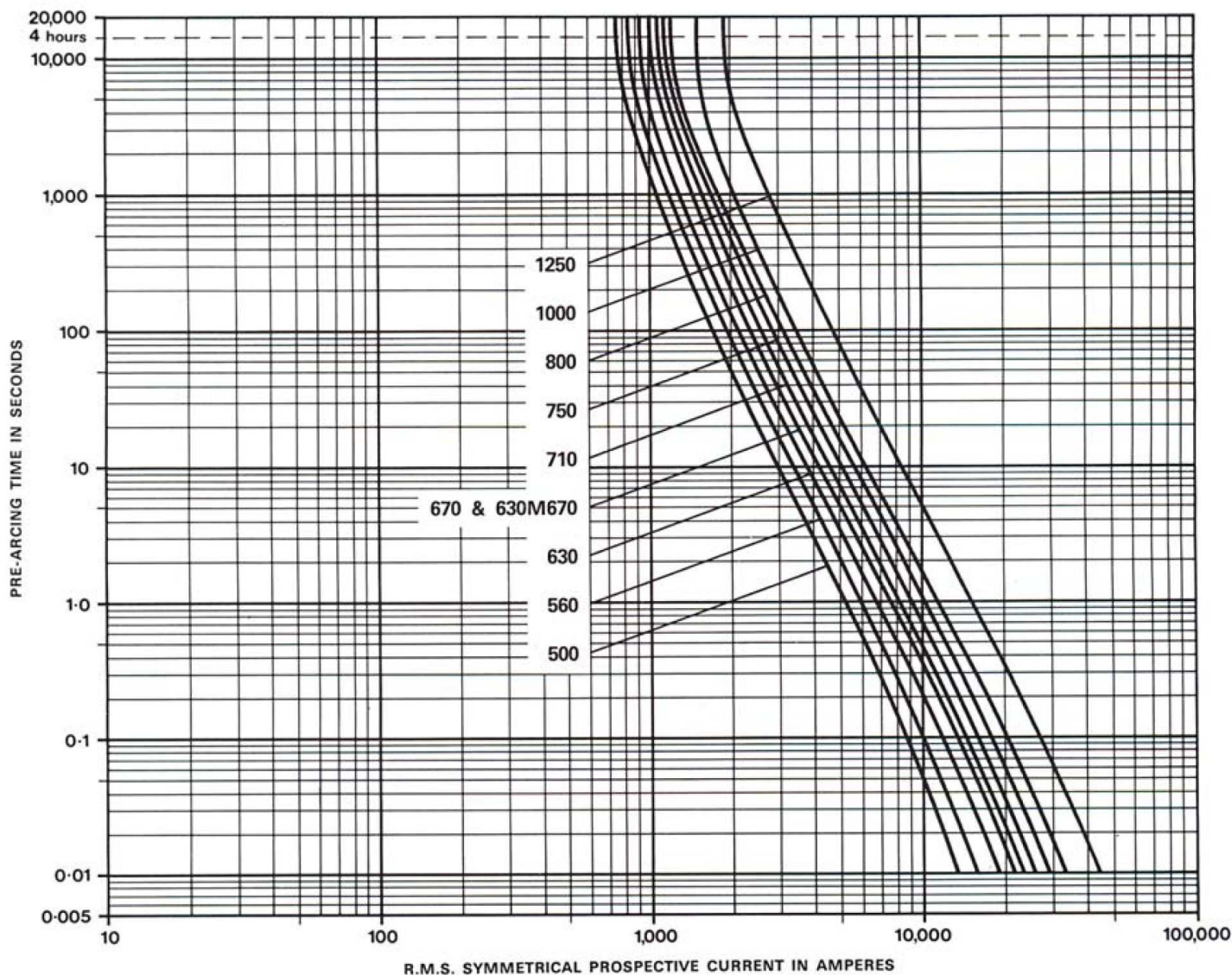
Type T Performance Data 80 – 450A

Current Rating (A)	Pre-Arc I ² t (A ² sec)	Total I ² t (A ² sec) @ 415V	Total I ² t (A ² sec) @ 550V	Total I ² t (A ² sec) @ 660V	Watts Loss (W)	Voltage (AC)	Breaking Capacity (AC)	Voltage (DC)	Breaking Capacity (DC)
80	14,000	40,000	52,000	66,000	6.3	660V	80kA	350V	40kA
100	17,000	60,000	80,000	100,000	7.9				
63M80	14,000	40,000	52,000	66,000	6.3			-	
63M100	17,000	60,000	80,000	100,000	7.9			460V	
125, 100M125	25,000	85,000	110,000	140,000	11.1				
160, 100M160	62,000	160,000	210,000	270,000	12.1				
200, 100M200	105,000	260,000	330,000	430,000	14.2				
250, 200M250	200,000	550,000	700,000	870,000	18.6				
315, 200M315	300,000	800,000	1,050,000	1,350,000	26.1				
355, 315M355	500,000	1,400,000	1,850,000	2,250,000	25.6				
400, 315M400	640,000	1,800,000	2,500,000	3,000,000	29.6				
450	800,000	2,200,000	3,000,000	3,800,000	38.0				



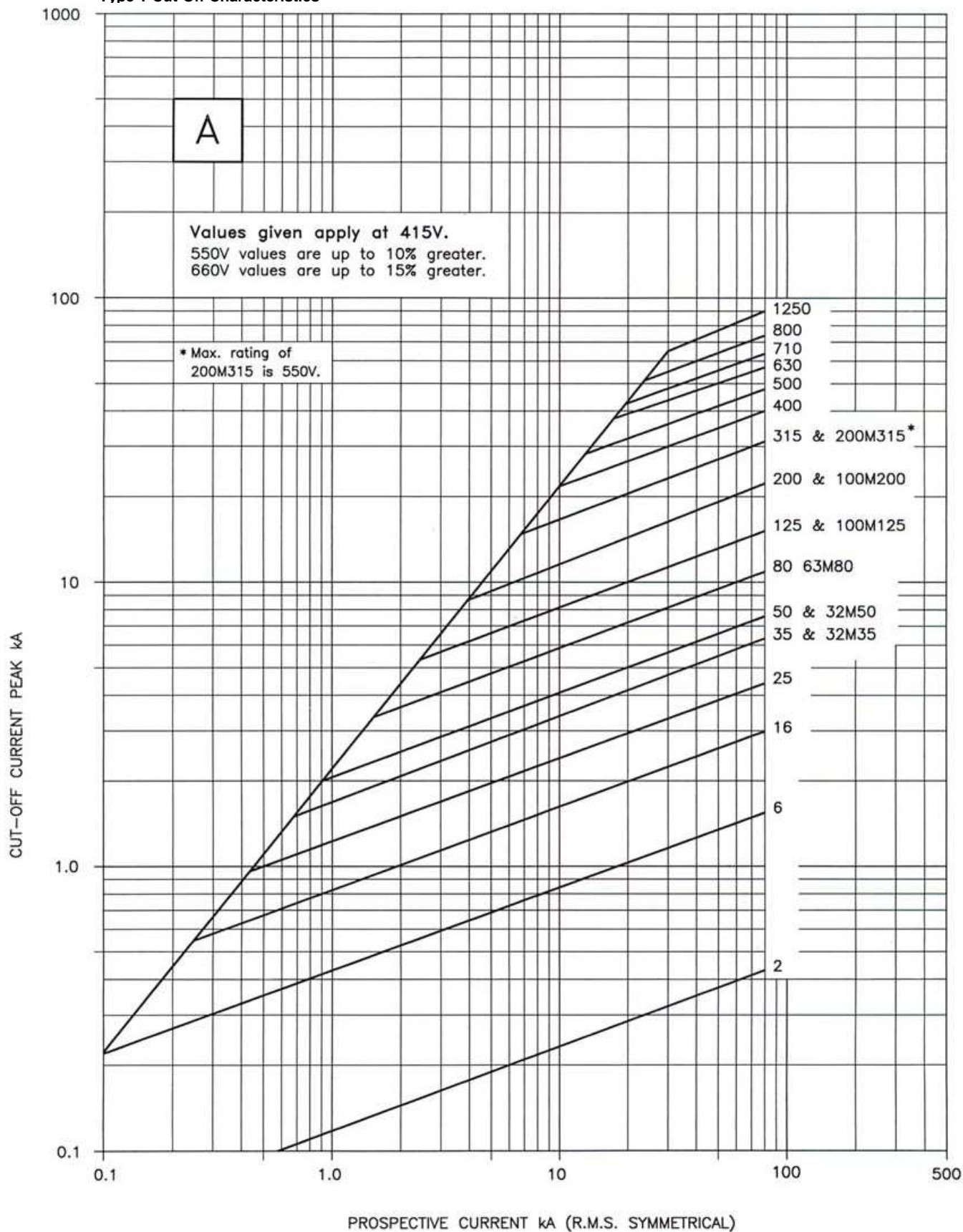
Type T Performance Data 500 – 800A

Current Rating (A)	Pre-Arc I ² t (A ² sec)	Total I ² t (A ² sec) @ 415V	Total I ² t (A ² sec) @ 550V	Total I ² t (A ² sec) @ 660V	Watts Loss (W)	Voltage (AC)	Breaking Capacity (AC)	Voltage (DC)	Breaking Capacity (DC)
500	1,050,000	3,000,000	3,800,000	4,500,000	39.8	660V	80kA	450V	40kA
560	1,400,000	3,800,000	4,250,000	5,400,000	44.8				
630	2,000,000	5,200,000	6,000,000	7,500,000	50.4				
670	2,400,000	6,400,000	7,400,000	9,000,000	53.0				
710	2,800,000	7,000,000	8,100,000	9,700,000	57.0				
750	3,700,000	8,700,000	10,500,000	12,000,000	57.0				
800	4,400,000	11,000,000	12,000,000	15,000,000	57.6				
1000	5,300,000	12,500,000	15,000,000	17,500,000	73.0				
1250	10,000,000	21,000,000	24,000,000	29,000,000	95.0				





Type T Cut-Off Characteristics





Type T Cut Off Characteristics

