

## LED AREA LIGHT

# MAKO Area Light

## 30W 40W

30W

4,120 lm

40W

5,500 lm



High-performance industrial area light  
Maximum light spread from low mounting heights 2.4m+  
Multi-purpose - conveyor & gantry lighting to private roadways  
Rated IP67 and IK10 to handle the toughest environments.



-140 LUMENS  
PER WATT



T2M LENSES  
& OPTIONS



IP67  
RATING



IK10  
RATING



EMERGENCY  
OPTIONS



GREEN & AMBER  
LED OPTIONS



5 YEAR  
WARRANTY

### SLEEK MODULAR DESIGN AND HIGHEST QUALITY COMPONENTS

Heavy duty industrial area light  
Sleek design to prevent build up of dust and dirt  
Wide light spread to suit shorter poles 2.4 to 6m  
Switchable from 30W to 40W. Output 140+ lm/W  
Operating temperatures of -40 to +50°C  
Rated IP67 and IK10  
Polycarbonate lenses. No glass  
34mm spigot entry  
5 years warranty. 3 years for Emergency Mako.

### APPLICATIONS

- Sleek design suits general streetlighting tasks at low mounting heights of 4 to 6m
- Low cost area lighting around industrial plants, mining camps, outbuildings, storage yards, muster points, access gates, roads & tracks
- Task lighting over plant & equipment, conveyors & gantries, typically with 2.4-3m mounting height
- Emergency option for emergency applications
- Emergency shower and eyewash stations.



DESIGNED FOR MAXIMUM LIGHT SPREAD FROM LOW MOUNTING HEIGHTS FROM 2.4 M.  
CONVEYORS • GANTRIES • WALKWAYS • PERIMETERS • ROADWAYS

Sleek design with rounded surfaces to prevent build-up of soil or caustic materials

34mm spigot entry, secured by two stainless steel bolts

Polyester coated (min 100 microns), cast aluminium housing

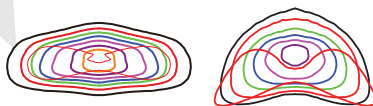
LED module with polycarbonate lenses. No glass in the fitting. Rated IK10



Super-reliable Philips Xitanium driver. Nominal output 30W/40W

High-efficiency LED chips producing ~140 lumens/Watt

T2M lenses for wide batwing light distribution (Other options including T3M, T4S & T4M also available)



Switchable from 40W (standard) to 30W to suit lux requirements

10kVA surge protection

Operating temperatures of -40 to +50°C for extreme conditions

IP67-rated to handle wet and dusty environments. (Emergency Mako is IP66)



APPLICATIONS

GANTRY/CONVEYOR LIGHTING  
MOUNTING HEIGHT BETWEEN 2.4 AND 3.0M

30W MAKO



- BRIGHTNESS & UNIFORMITY**  
High output fitting @ 140+ lumens/W  
Wide beam at low mounting heights - T2M lenses
- RELIABILITY**  
Proven quality components  
Heavy duty construction
- LONGEVITY**  
Operating temperatures -40 to +50°C  
Vibration-proof. IP67 and IK10.



**LIGHTING STANDARD**

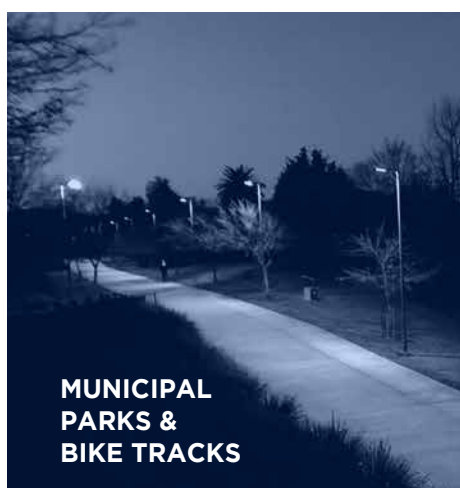
**GANTRY/CONVEYOR LIGHTING**  
30W MAKO AREA LIGHT WITH T2M LENSES  
MOUNTING HEIGHT BETWEEN 2.4 AND 3.0M  
Standard 40 lux ave. LLF 0.7

Mounting height	Ave lux	Max Lux	Min lux	Spacing
2.4m	55	110	21	14m
2.7m	50	120	16	16m
3.0m	49	98	19	16m

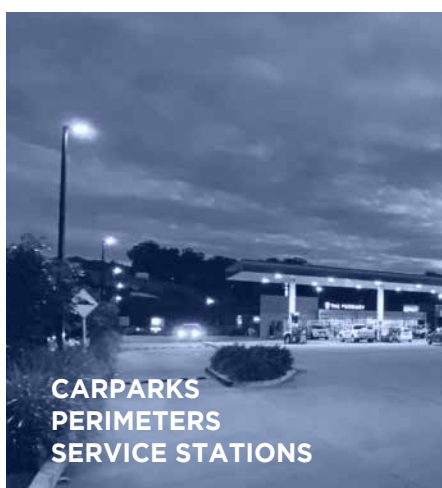
## APPLICATIONS

### ROADWAY / COMMUNITY LIGHTING MOUNTING HEIGHTS TO 6M

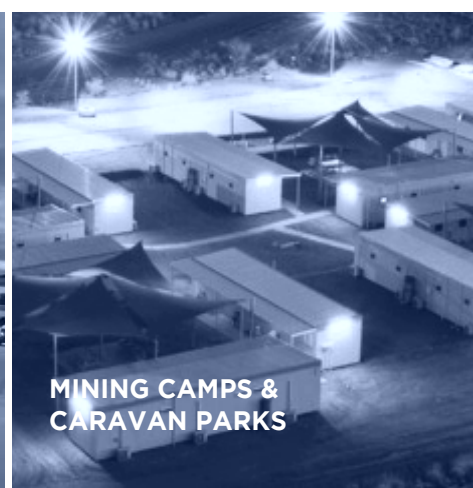
30/40W MAKO



**MUNICIPAL  
PARKS &  
BIKE TRACKS**



**CARPARKS  
PERIMETERS  
SERVICE STATIONS**



**MINING CAMPS &  
CARAVAN PARKS**

### ROADWAY / COMMUNITY LIGHTING

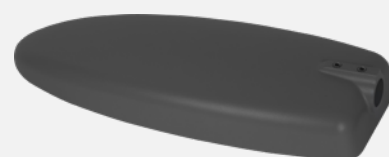
40W MAKO AREA LIGHT WITH T2M LENSES  
MOUNTING HEIGHTS FROM 4M TO 6M

Beam area >1 lux. LLF 0.8

Mounting Height	Ave Lux	Max Lux	Beam Area
4m	14	86	32x13m
5m	11	56	37x16m
6m	8	38	41x 18m

### HOUSING COLOUR OPTIONS

Standard colour is grey  
(Colour RAL 7004).  
Black is also available  
to suit black poles.



### OPTIONAL LIGHTING CONTROLS

- **MICROWAVE MOTION SENSOR**  
Dimmable 1-10VDC for auto-dimming  
when unattended.  
Remote control programming.
- **PE CELL**  
Auto on-off for operation between  
dusk and dawn



**MICROWAVE  
MOTION SENSOR**  
1-10VDC dimming  
programmable  
by remote control

**PE CELL**  
Light sensor  
with protective  
metal shield

### VOLTAGE OPTIONS

100-277VAC is standard voltage.  
12VDC option is also available.



## OPTIONS

### EMERGENCY MAKO



#### Maintained emergency fitting Battery in driver compartment 40W - 5400 lm. IP66.

3 hours 5W emergency runtime  
Status indicator light/test button underneath  
Emergency Mako is rated IP66  
3 yr warranty.

#### SPECIFICATIONS - MAINTAINED EMERGENCY OPTION

Battery located inside driver compartment  
5W emergency output - 3 hour runtime.

Operating mode	Maintained
Charging method	Intelligent current limited constant voltage
Testing system	Status light & test switch under fitting
Cable connector	4 core cable with 4 position terminal block Constant active, switched active, neutral, earth
Operating temp	0-40°C
IP Rating	IP66



Status indicator & manual test button



### EMERGENCY SHOWER EYEWASH STATION



#### Safety shower & eyewash stations Green LED chipset (530nm) 40W - 5,500 lm Built-in 5W emergency pack 3 hour battery back-up.

Long 50,000 hrs service life.  
Wide beam spread for greatly improved  
visibility in emergency situations.  
IP66. 3 year warranty.



GREEN LED 530nm

### AMBER OUTPUT

#### Amber LED - turtle friendly 595nm LED chipset 30W or 40W nominal.

For areas above the Tropic of Capricorn where  
turtle-friendly lighting is prescribed.  
Or for extremely dusty or foggy conditions requiring  
improved visibility.



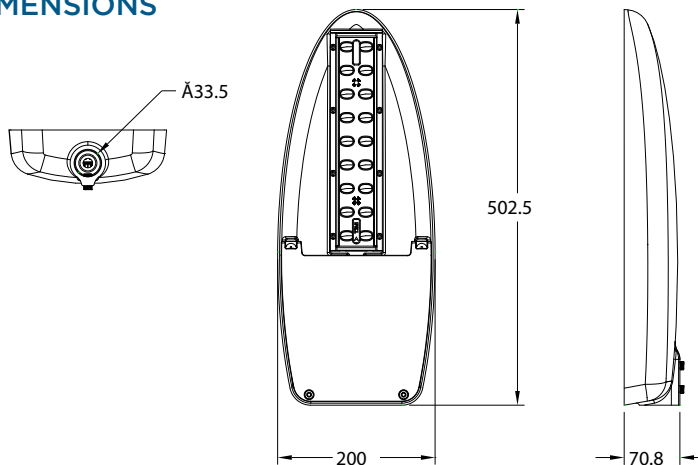
AMBER LED 595nm

## OPTIONAL WALL-BRACKET

Optional 304 stainless steel bracket with short spigot available for mounting onto walls (PART NUMBER - SAMAKOBT).



## DIMENSIONS



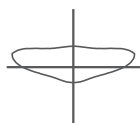
SIZE: 495mm L x 200mm W x 75mm H  
WEIGHT: 5.88kg  
EPA: 0.076m<sup>2</sup>

## OPTICAL LENS OPTIONS

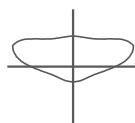
Asymmetric:

T2M is the standard lens specification.

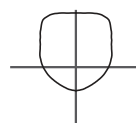
T3M, T4S and T4M are also available.



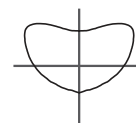
T2M



T3M



T4S



T4M

## DELIVERY OF MADE-TO-ORDER ITEMS

Please allow up to 6-8 weeks for special order items and where sufficient components may not be available locally.

## TECHNICAL PARAMETERS

Power consumption	30W or 40W (nominal, via switch on driver)
Input voltage options	100-277VAC (12VDC option also available)
LED chip drive current	30W - 530 mA 40W - 700mA
Power factor	≥0.9 at full load
Surge protection	Imax 10kA
LED chips	High performance -140+ lm/W
Driver / Dimming	Philips Xitanium / Dimmable 1-10VDC
Luminous flux	30W - 4000lm 40W - 5400 lm
Colour temperature	5000°K (options for Amber, 4000°K, 6000°K, Green)
CRI	RA >70
Light distribution	IESNA T2M standard. T3M,T4S, T4M options
IP Rating / IK Rating	IP67 / IK10

Composition - lenses	Polycarbonate - no glass
Composition - housing	Aluminium with polyester coating (>100 microns)
Exterior colour	Grey-RAL7004 or black. Orange panel (Emergency)
Spigot entry diameter	34mm spigot entry
Weight / Dimensions / EPA	5.88kg / 495 L x 200 W x 75mm H / 0.076m <sup>2</sup>
Working temperature	-40 to 50 °C
Service life	>50,000 hours
Warranty	5 years. 3 years for emergency fittings
Product code 30/40W	SL040MAKO SL040MAKO-AM (Amber CCT)
With sensors	SL040MAKO-PE (PE) SL040MAKO-MMS (microwave)
Emergency	SL040MAKO-EM
Green Emergency	SL040MAKO-EMG
Stainless wall bracket	SLMAKOBKT